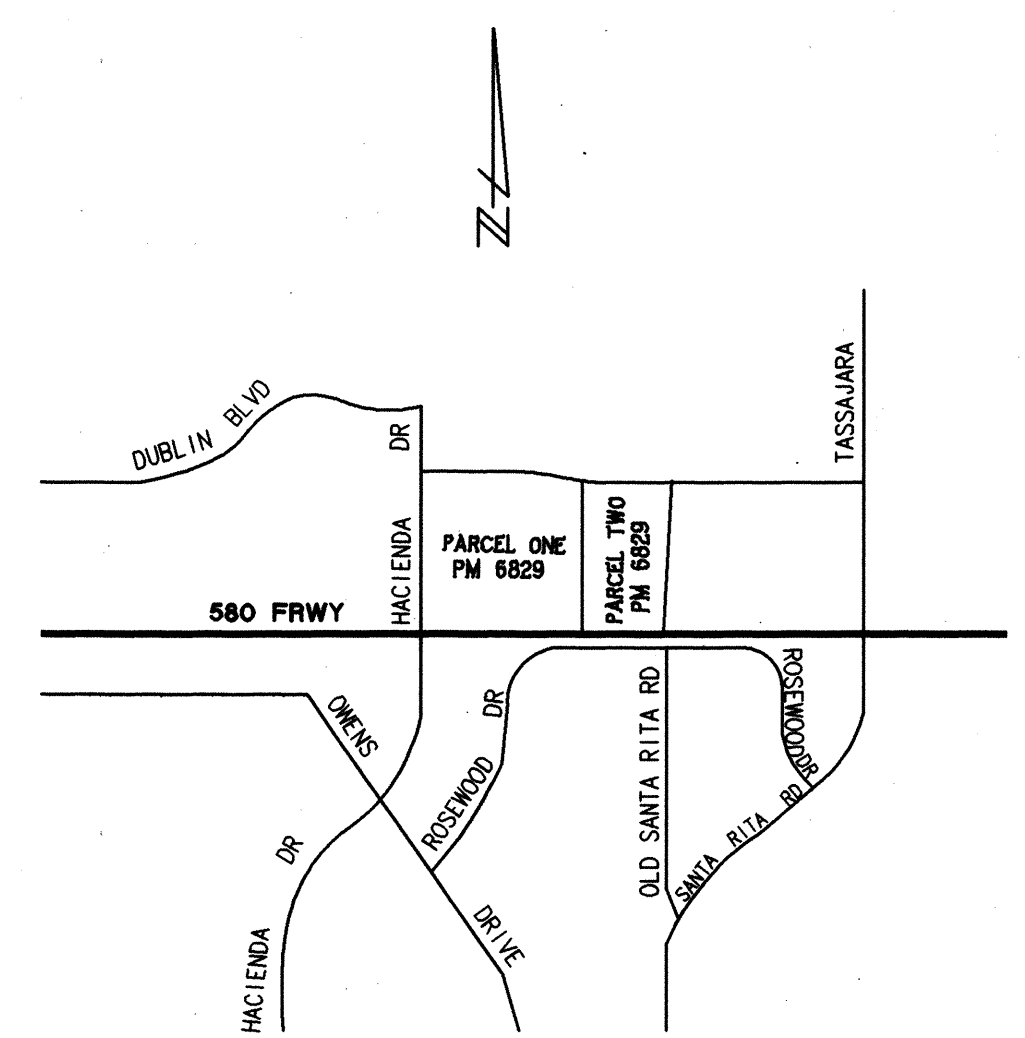
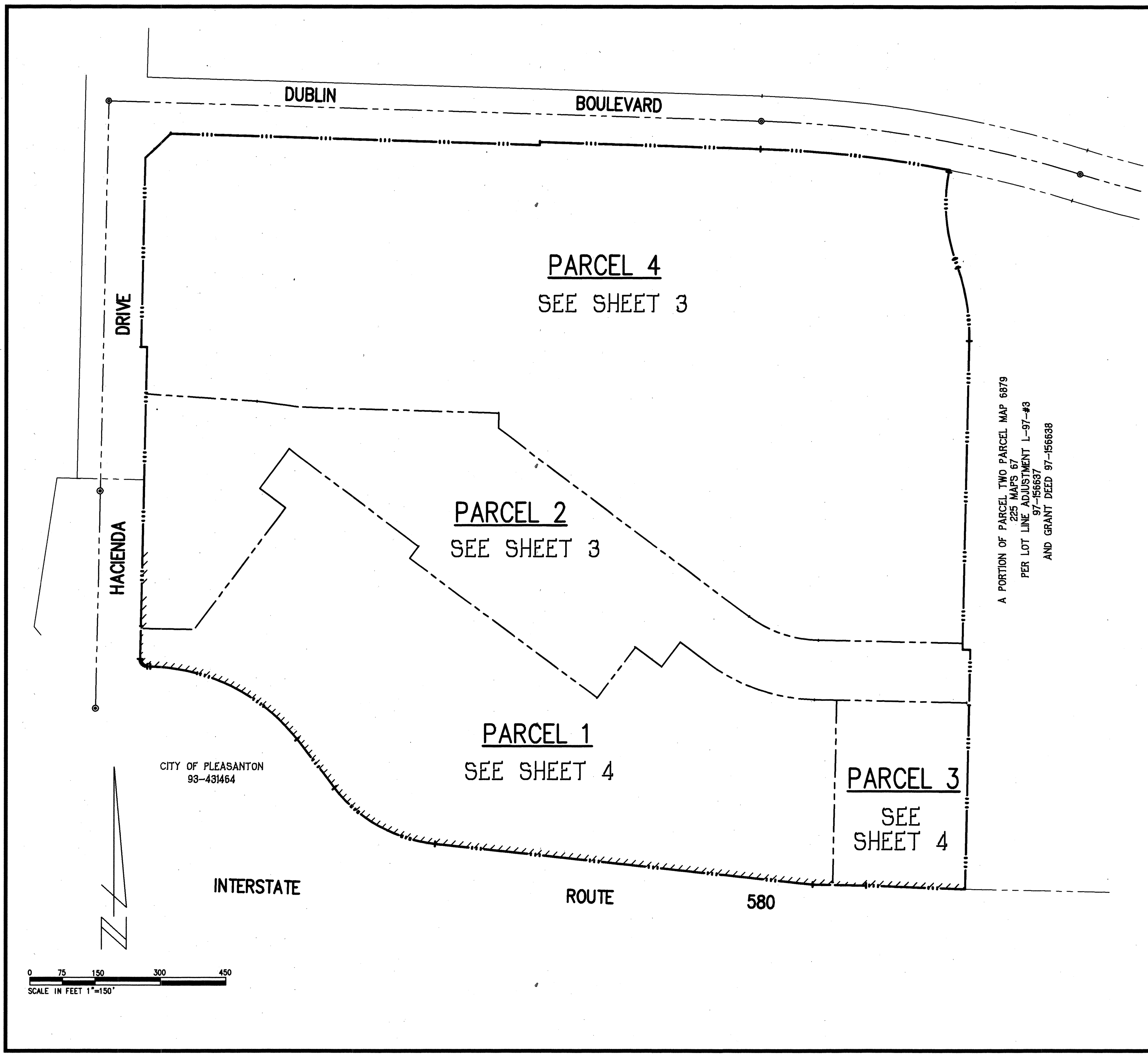


Parcel Map 7116  
Map Bk. 232  
Pg. 54



VICINITY MAP

SHEET INDEX

DESCRIPTION	SHEET #
CERTIFICATE SHEET	1
SHEET INDEX/VICINITY MAP	2
PARCELS 2 & 4	3
PARCELS 1 & 3	4

A PORTION OF PARCEL TWO PARCEL MAP 6879  
225 MAPS 67  
PER LOT LINE ADJUSTMENT L-97-#3  
97-156637  
AND GRANT DEED 97-156638

PARCEL MAP 7116

BEING A SUBDIVISION OF PARCEL ONE AND A PORTION OF PARCEL TWO  
OF PARCEL MAP 6879 FILED NOVEMBER 4, 1996, IN BOOK 225 OF MAPS,  
PAGES 67-75 ALAMEDA COUNTY RECORDS, AS SAID PARCEL ONE AND TWO WERE  
ADJUSTED BY THE LOT LINE ADJUSTMENT RECORDED JUNE 24, 1997.  
RECORDER'S SERIES NUMBER 97-156637

CITY OF DUBLIN ALAMEDA COUNTY CALIFORNIA

KIER AND WRIGHT CIVIL ENGINEERS

SCALE: 1"=150'

SEPTEMBER 1997

SHEET 2 OF 4 SHEETS

Z:\DRAW\96637\96637PM2.DWG

Bk 232 Pg 54