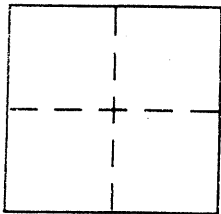


CORNER RECORD

BK 39 Pg 10
Document Number CR 4392City of Unincorporated Castro ValleyCounty of Alameda, CaliforniaBrief Legal Description Found standard Alameda County monument on San Miguel Ave

CORNER TYPE

Government Corner ☐ Control ☒
Meander ☐ Property ☐
Rancho ☐ Other ☐
Date of Survey 09/13/2010

COORDINATES (Optional)

N. _____
E. _____
Zone _____ NAD27 ☐ NAD83 ☐
NAD83 Epoch _____
Elev. _____
Vert. Datum: NGVD29 ☐ NAVD88 ☐
Meas. Units: Metric ☐ Imperial ☒

Corner – Left as found ☒ Found and tagged ☐ Established ☐ Reestablished ☐ Rebuilt ☐

Identification and type of corner found: Evidence used to identify or procedure used to establish or reestablish the corner:

County Street Project may disturb monument which has been preserved with staddle points as shown on the diagram on Page 2

In compliance with section 8771 of the Professional Land Surveyors Act this corner record is being filed to establish the position of an existing monument prior to street reconstruction.

A description of the physical condition of the monument as found and as set or reset:

SEE LEGEND (Page 2)

SURVEYOR'S STATEMENT

This Corner Record was prepared by me or under my direction in conformance with

the Land Surveyor's Act on December 20 2010

Signed [Signature] P.L.S. or R.C.E. No. L.S. 7905

COUNTY SURVEYOR'S STATEMENT

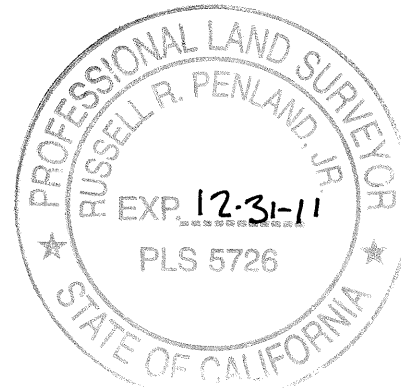
This Corner Record was received 12-14-2011

and examined and filed 1-11-2011

Signed [Signature] P.L.S. or R.C.E. No. 5726

Title COUNTY SURVEYOR

County Surveyor's Comment _____

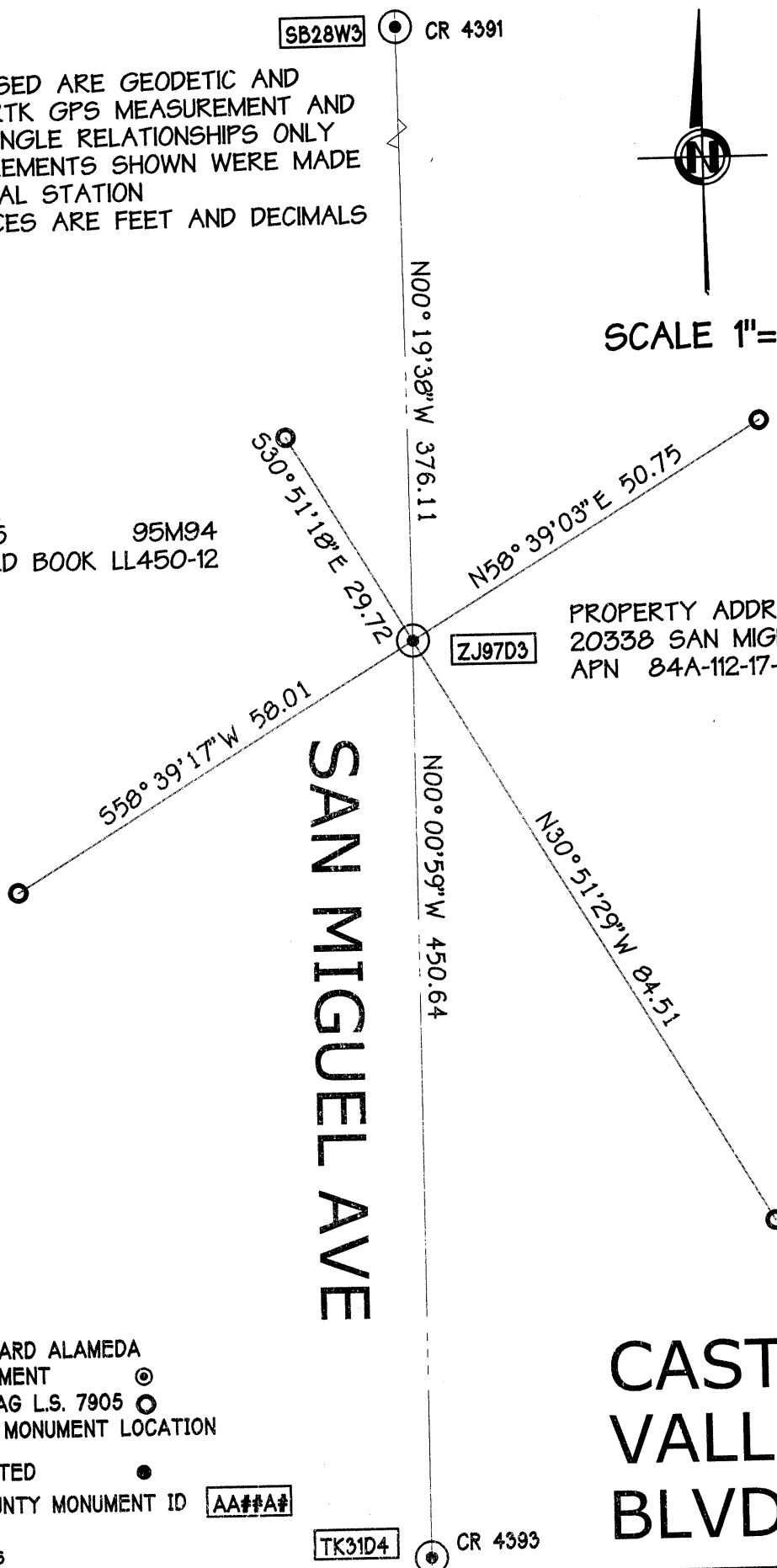
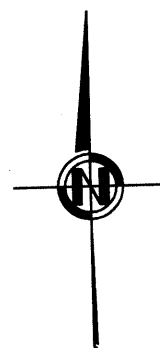


BEARINGS USED ARE GEODETIC AND
 BASED ON RTK GPS MEASUREMENT AND
 USED FOR ANGLE RELATIONSHIPS ONLY
 ALL MEASUREMENTS SHOWN WERE MADE
 WITH A TOTAL STATION
 ALL DISTANCES ARE FEET AND DECIMALS
 THEREOF



REFERENCES

TRACT 3825 95M94
 COUNTY FIELD BOOK LL450-12

SCALE 1"=20'



LEGEND:

FOUND STANDARD ALAMEDA
 COUNTY MONUMENT 
 SET BRASS TAG L.S. 7905 
 TO PRESERVE MONUMENT LOCATION

FOUND AS NOTED 
 ALAMEDA COUNTY MONUMENT ID AA##A#

ALS JOB 2010-046

TK31D4 CR 4393