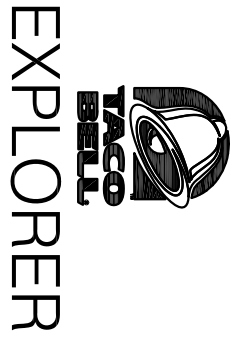


CONTRACT DATE:	4.3.17
BUILDING TYPE:	EXPLORER LG-64
PLAN VERSION:	NOVEMBER 2015
SITE NUMBER:	XXXXXX
STORE NUMBER:	XXXX

TACO BELL

LAKEPOINT  
EMERSON, GA 30137



FLOOR  
PLAN

A1.0

ROUGH OPENINGS ARE NOT  
NECESSARILY TO STUD.  
SEE DETAILS ON SHEET A6.1  
FOR R.O. LOCATIONS.

FLOOR PLAN 1/4"=1'-0"

A

CONTRACTOR TO INSTALL LIGHTING PROTECTION SYSTEM  
ON TOWER AND BUILDING ROOF.

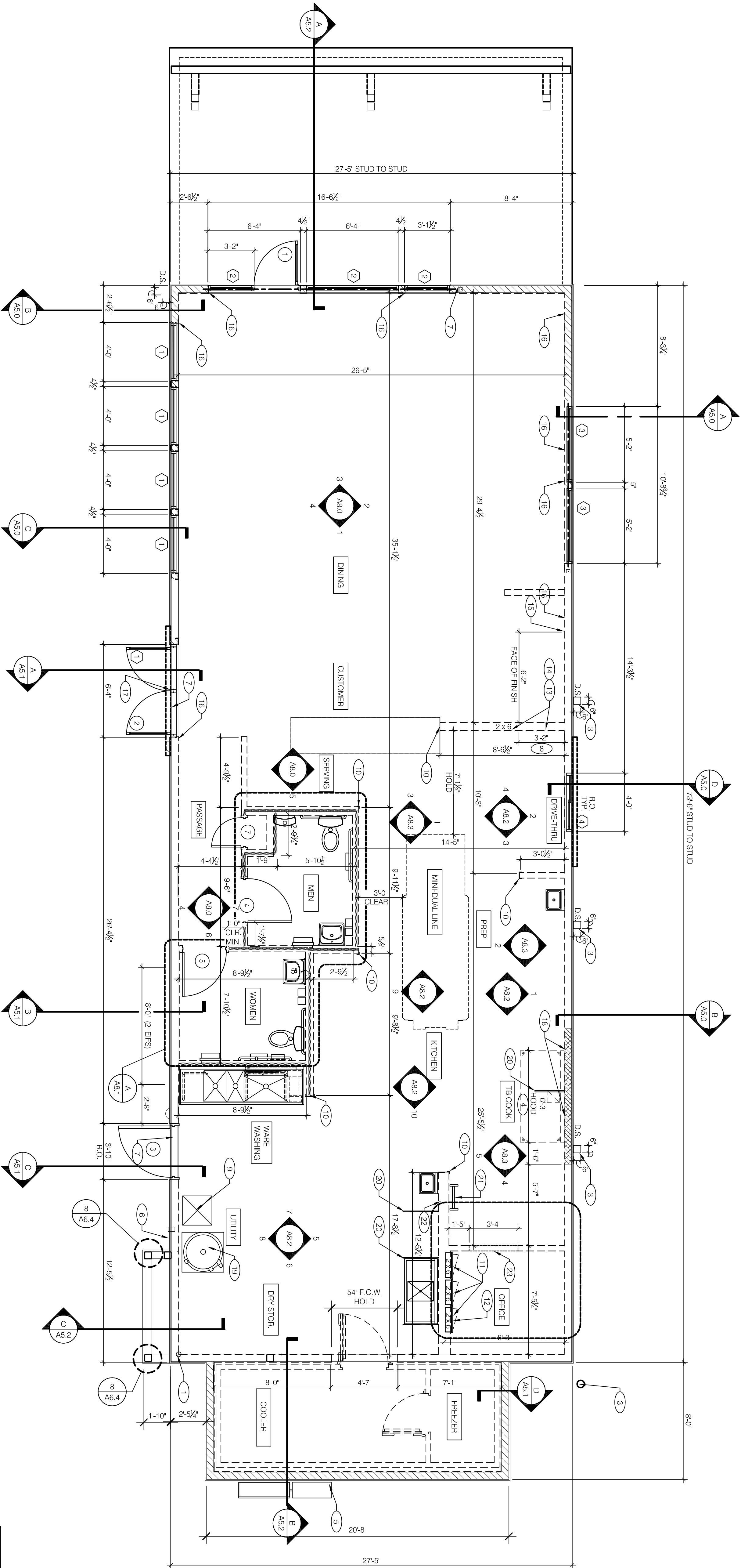
DIMENSIONS:  
A. ALL DIMENSIONS ARE TO FACE OF STUD U.O.N. REFER TO FOUNDATION PLAN FOR FACE  
OF CONC. DIMENSIONS.  
B. DIMENSIONS NOTED AS CLEAR OR HOLD ARE MIN. REQ'D. NET CLEARANCE FROM FACE  
OF CONC. DIMENSIONS.  
C. DIMENSIONS NOTED AS CENTER LINE EQUIPMENT SIZES W/ VERTICALITY TO WH.  
DIMENSIONS.  
D. SEE A7.1 FOR CEILING FINISHES.

WINDOWS, DOORS:  
A. SET SHT. ATT FOR WINDOW TYPES AND DOOR SCHEDULE.  
B. ALL DOOR AND WINDOW OPENING DIMENSIONS ARE TO ROUGH OPENING.  
FINISH SUBSTRATES:  
A. PROVIDE 1/2" THICK CEMENTitious BD. FROM FLOOR SLAB TO 12' A.F.F. MIN. IN LIEU OF  
GY. BD. AT ALL WALLS EXCEPT SHEAR WALL SURFACES U.O.N.  
B. PROVIDE 1/2" THICK CEMENTitious BD. FROM FLOOR SLAB TO 12' A.F.F. MIN. IN LIEU OF  
GY. BD. AT ALL WALLS EXCEPT SHEAR WALL SURFACES U.O.N.  
C. ALL DOOR AND WINDOW OPENING DIMENSIONS ARE TO ROUGH OPENING.  
D. ALL BACK-OF-HOUSE AND OFFICE WALLS SHALL HAVE 1/2" CDX PLYWOOD SUBSTRATE  
U.O.N.

FLOOR:  
A. SEE A2.0 FOR SERVING PLAN AND DETAILS.  
B. SEE A2.0 FOR SERVING PLAN AND DETAILS.  
C. SEE A2.0 FOR SERVING PLAN AND DETAILS.  
D. SEE A7.1 FOR CEILING FINISHES.  
GENERAL:  
A. PROVIDE THREE FIRE EXTINGUISHERS: (2) 10 B, BC and (1) 10 B, ABC, TO COMPLY WITH  
LOCAL FIRE CODE. LOCATE PER DIRECTION OF FIRE MARSHAL ON LOCAL AUTHORIZING  
DRAWINGS.  
B. DRAWINGS ARE BASED UPON WOOD FRAMING, UTILIZATION OF METAL STUDS ON  
NON-BEARING INTERIOR PARTITIONS, BULKHEADS AND SOFFITS IS ACCEPTABLE.  
C. THE FINISH PER 9A6.2 THROUGH E17.5 SHALL BE BUSIED TO PREVENT DAMAGE TO  
D. ALL PENETRATIONS THROUGH E17.5 SHALL BE SEALED USING MFPS APPROVED  
METHOD.

	TYPICAL EXTERIOR WALL: 2x6 WD STUDS AT 16\"/>
	TYPICAL INTERIOR WALL: 2x4 WD STUDS AT 16\"/>
	TYPICAL EXTERIOR WALL: 2x6 WD STUDS AT 16\"/>
	TYPICAL INTERIOR WALL: 2x4 WD STUDS AT 16\"/>

WALL SUBSTRATES:  
- DINING ROOM:  
1/2\"/>  
- KITCHEN WALLS AND DINING ROOM CLOSET:  
1/2\"/>  
U.O.N. IF DOUBLE SIDED SHEAR WALL PLYWD IS SPECIFIED THE PLYWOOD SHALL BE CONTINUOUS FROM SILL PLATE TO TOP PLATE. (SEE 4, 11 & 20 /A6.3.)  
- RESTROOM WALLS:  
5/8\"/>  
- 5/8\"/>  
1/2\"/>  
HEIGHT U.O.N. FINISH AS SCHEDULED.



A

B

C

D

E

F