

CORNER RECORD

Agency Index

BOOK 114 PAGE 24

Document Number

CR 11731

City of BERKELEYCounty of ALAMEDA, California

Brief Legal Description

CITY OF BERKELEY (C.O.B.) MONUMENT B1424 AS SHOWN UPON CR 7113 (BK 67, PG 97)
ALONG GRIZZLY PEAK BOULEVARD AT THE BERKELEY / OAKLAND CITY LIMIT LINE.

CORNER TYPE

COORDINATES (Optional)

RANCHO
SAN
ANTONIO
(V & D PERALTA)Government Corner ☐ Control
Meander ☐ Property
Rancho ☐ OtherN. 2148760 ± E. 6057608 ±☒ ElevationUnits Metric ☐ U.S. Survey Foot ☒☐ Horizontal Datum

Zone Epoch Date

Vertical Datum

Date of Survey 6/18/2018☐ Complies with Public Resources Code §§8801-8819☐ Complies with Public Resources Code §§8890-8902PLS Act Ref: ☐ 8765(d)☒ 8771☐ 8773☐ Other:Corner/
Monument: ☒ Left as found☐ Established☐ Rebuilt☒ Pre-Construction☐ Found and tagged☐ Reestablished☒ Referenced☐ Post-Construction

Narrative of corner identified and monument as found, set, reset, replaced, or removed:

☒ See sheet #2 for description (s):

FOUND MONUMENT THAT COULD BE DAMAGED OR DESTROYED BY A PROPOSED GAS LINE CONSTRUCTION PROJECT. MONUMENT WAS PREVIOUSLY REFERENCED BY OTHERS AND VERIFIED AS SHOWN ON PAGE 2 OF 2.

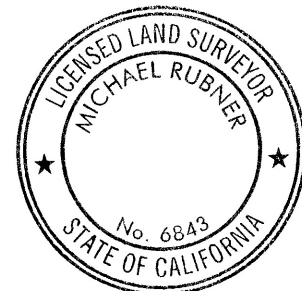
THE PURPOSE OF THIS CORNER RECORD IS TO PRESERVE THE LOCATION OF THE MONUMENT PRIOR TO CONSTRUCTION. NO ATTEMPT WAS MADE TO DETERMINE THE RELATIONSHIP BETWEEN THE MONUMENT AND PROPERTY LINES, RIGHT-OF-WAY LINES, CENTERLINES OR OTHER MONUMENTS.

NOTE: THIS CORNER RECORD IS TO SERVE AS NOTICE THAT THE MONUMENT AND REFERENCE POINTS FROM CR 7113 WERE FOUND TO BE IN GOOD CONDITION. MEASUREMENTS AS SHOWN ON SHEET 2 OF 2 WERE TAKEN TO DETERMINE THAT NO SIGNIFICANT DIFFERENCE BETWEEN RECORD AND MEASURED WERE PRESENT. THIS CORNER RECORD IS NOT INTENDED TO SUPERSEDE CR 7113.

SURVEYOR'S STATEMENT

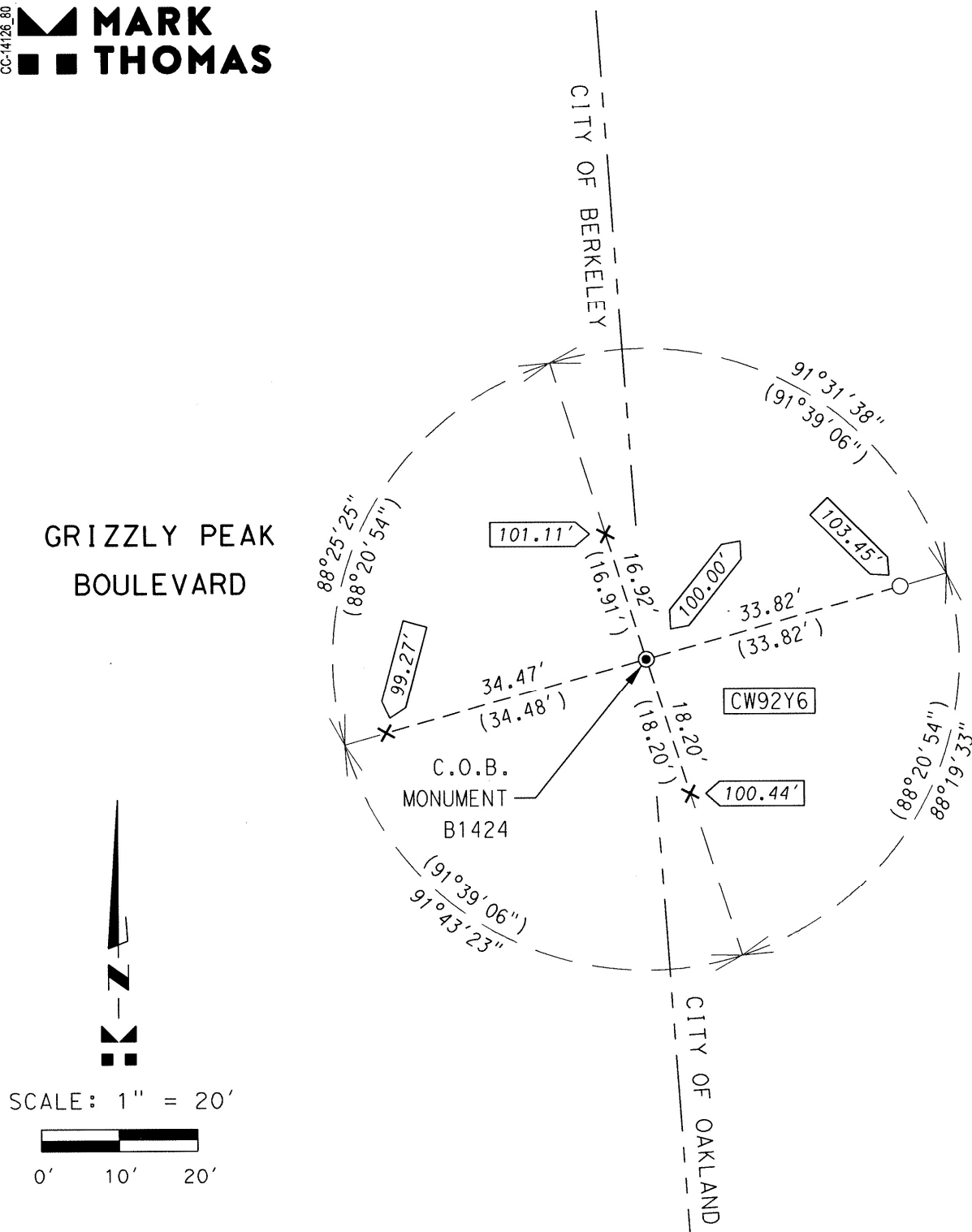
This Corner Record was prepared by me or under my direction in conformance with
the Professional Land Surveyors' Act on AUGUST 13, 2018Signed E.P.K. P.L.S. or R.C.E. No. 8911

COUNTY SURVEYOR'S STATEMENT

This Corner Record was received 21 JULY 2018and examined and filed 26 SEPTEMBER 2018Signed Michael Rubner P.L.S. or R.C.E. No. 6843Title COUNTY SURVEYOR

County Surveyor's Comment

CC-14126_80
 **MARK
THOMAS**

**LEGEND:**

- FOUND PUNCHED 3/8" PIN IN CONCRETE IN WELL FROM CR 7113
- × FOUND CUT CROSS REFERENCE POINT FROM CR 7113
- FOUND 1/2" REBAR / CAP REFERENCE POINT FROM CR 7113
- () RECORD INFORMATION FROM CR 7113 (BK 67, PG 97)
- 100.00' MONUMENT ELEVATION (ASSUMED)
- xxx.xx' REFERENCE POINT ELEVATION (ESTABLISHED USING TOTAL STATION)
- CW92Y6 ALAMEDA COUNTY MONUMENT IDENTIFICATION NUMBER FROM CR 7113