

RECORD OF SURVEY NO. 31-43

SHEET 1 OF 1

FOR
RALPH HERRMANN

WITHIN THE NORTHWEST 1/4, SECTION 26
TOWNSHIP 9 NORTH, RANGE 22 EAST, M.D.B.&M.
MONO COUNTY, CALIFORNIA



BASIS OF BEARINGS:

THE BASIS OF BEARINGS OF THIS MAP IS THE CALIFORNIA COORDINATE SYSTEM OF 1983, ZONE 3. SEE FOUND MONUMENTS SHOWN FOR LOCATIONS.

COUNTY SURVEYOR'S STATEMENT:

THIS MAP HAS BEEN EXAMINED IN ACCORDANCE WITH SECTION 8766 OF THE PROFESSIONAL LAND SURVEYOR'S ACT THIS 14th DAY OF September 2005.



COUNTY SURVEYOR

JOHN S. PARRISH
(TRI STATE CONTRACT)
L.S. 5050 LICENSE EXPIRES 6-30-06

SURVEYOR'S STATEMENT:

THIS MAP CORRECTLY REPRESENTS A SURVEY MADE BY ME OR UNDER DIRECTION IN CONFORMANCE WITH THE REQUIREMENTS OF THE PROFESSIONAL LAND SURVEYOR'S ACT AT THE REQUEST OF RALPH HERRMANN IN NOVEMBER, 2004.

WYATT J. OWENS
RCE 14741 LICENSE EXPIRES 03-31-07

RECORDER'S STATEMENT:

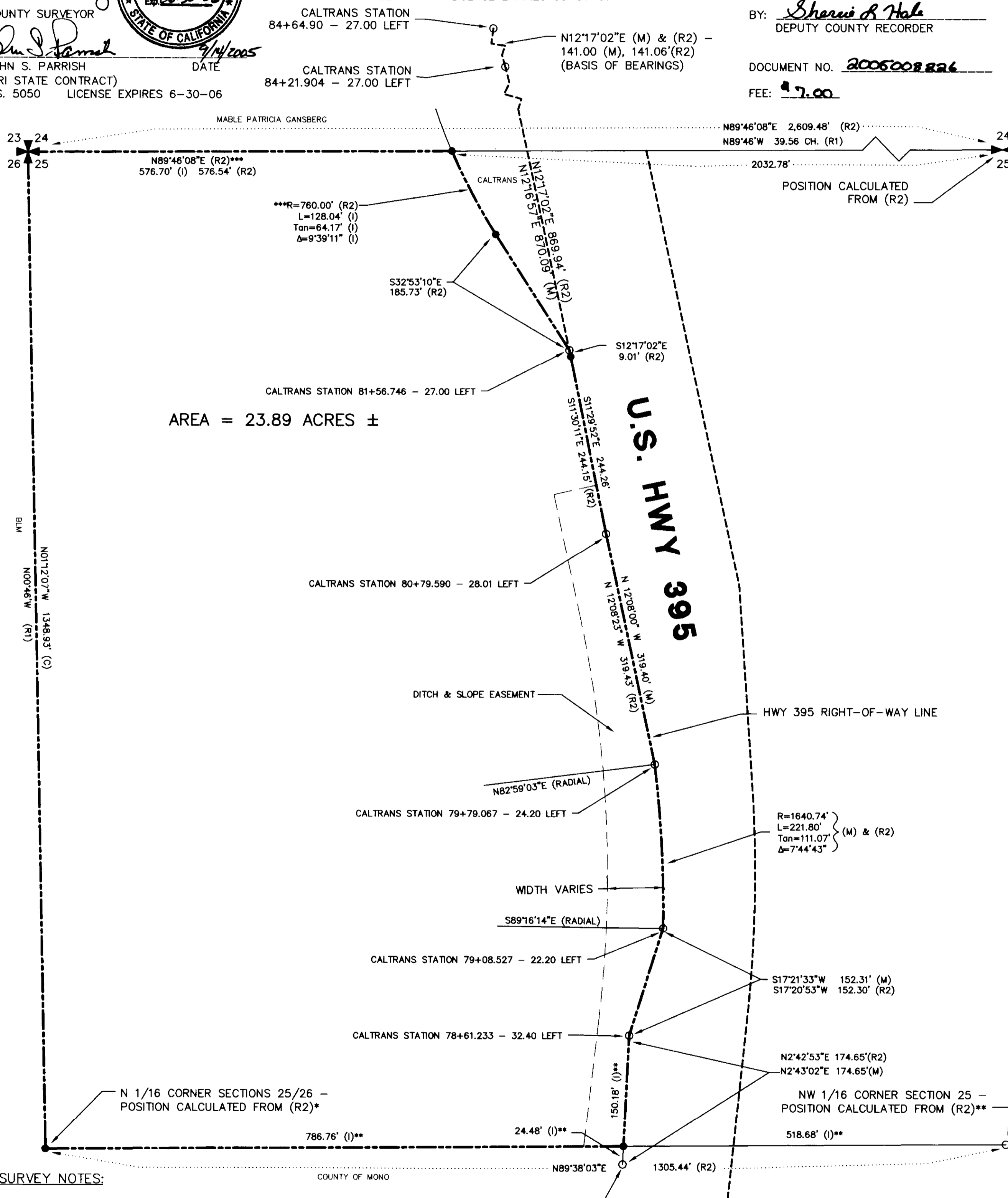
FILED THIS 6th DAY OF October, 2005, AT 3:26 P.M. IN BOOK 4 OF RECORD OF SURVEY MAPS AT PAGE 8 AT THE REQUEST OF RALPH HERRMANN.

RENN NOLAN
MONO COUNTY RECORDER

BY: Sherrie R. Hale
DEPUTY COUNTY RECORDER

DOCUMENT NO. 2005008826

FEE: \$7.00



SURVEY NOTES:

* THE WEST 1/4 CORNER OF SECTION 25, SET IN THE BLM DEPENDENT RESURVEY OF TOWNSHIP 9 NORTH, RANGE 22 EAST, M.D.B.&M. OF 1947 HAS BEEN DESTROYED (PIPE WAS FOUND DISTURBED NEAR CORNER LOCATION). THEREFORE, THE CALCULATED CALTRANS LOCATION OF N 1/16 SECTIONS 25/26 SHOWN ON SHEET 4 OF 6 OF (R2) WAS USED (CALTRANS FOUND THE NOW LOST 1/4 CORNER IN 2002 AND COMPUTED THE 1/16 CORNER POSITION.)

** THE NW 1/16 CORNER OF SECTION 25 WAS NOT LOCATED. THE LOCATION OF THE SE PROPERTY CORNER DETERMINED BY INTERSECTION OF R/W LINE (FROM FOUND MONUMENTS) AND CALTRANS 1/16 LINE PER SHEET 4 OF 6 OF (R2) USING CALTRANS BEARINGS.

*** THE NORTH LINE OF SECTION 25 PER (R2) WAS USED, DUE TO MEASURED FIELD ACCURACY AND GLO BRASS CAP MONUMENTS USED BY CALTRANS IN 2002. NE PROPERTY CORNER LOCATION SET AT INTERSECTION OF R/W LINE AND SECTION LINE USING CALTRANS BEARINGS.

LEGEND:

- SET 5/8" REBAR WITH PLASTIC CAP MARKED RCE 14741
- ✕ FOUND BRASS CAP SECTION CORNER
- ⊠ QUARTER CORNER - POSITION CALCULATED
- FOUND CALTRANS REBAR & CAP WITH STATION/OFFSET INFORMATION OR AS NOTED
- (M) MEASURED
- (C) CALCULATED FROM RECORD DATA
- (I) CALCULATED DISTANCE FROM BEARING-BEARING INTERSECTION OF LINES

RECORD INFORMATION:

(R1) PER 1947 BLM PLAT OF DEPENDENT RESURVEY OF T. 9 N., R. 22 E., M.D.B.&M.

(R2) PER CALTRANS R/W RECORD MAPS FOR HIGHWAY 395, SHEETS 3 THROUGH 6, MILE NUMBERS 113.72, 114.00, 114.22, & 114.44 RESPECTIVELY

OWENS ENGINEERING, INC.

CIVIL ENGINEERING & LAND SURVEYING

1466 HIGHWAY 395, GARDNERVILLE, NV 89430
(775) 782-2881 FAX: (775) 782-2579

File: C:\DATA\herrmann\dwg\ herrmann.dwg
<Dell Laptop> Fri, 05 Aug 2005 - 10:51am

R.S. Book 4 Page 8