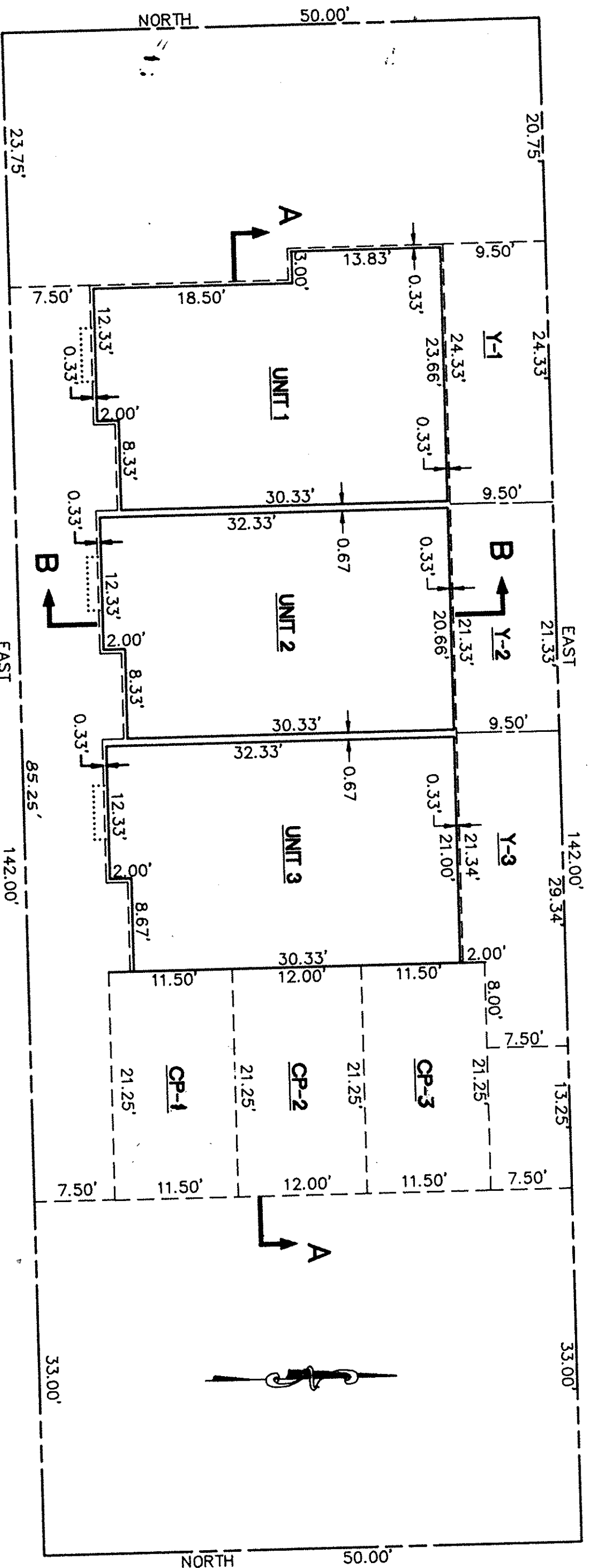
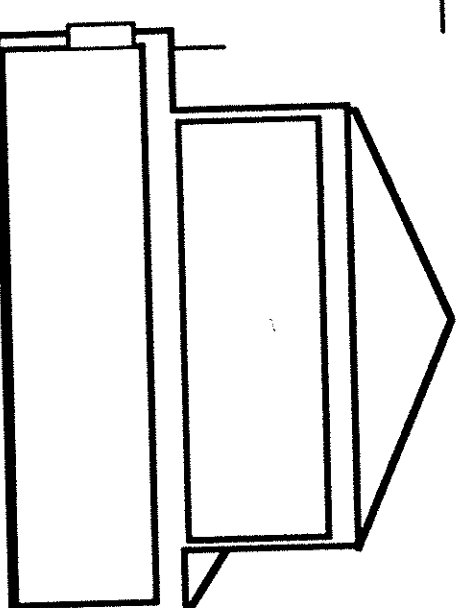


**NOTES AND LEGEND**  
ALL DISTANCES AND DIMENSIONS ARE IN FEET AND DECIMALS THEREOF.  
ALL DIMENSIONS ARE TO THE INSIDE UNFINISHED SURFACE OF THE UNIT.  
UNLESS OTHERWISE NOTED,  
THE DISTINCTIVE BORDER LINE INDICATES THE BOUNDARY OF LAND  
SUBDIVIDED BY THIS MAP.  
Y INDICATES YARD  
C.P. INDICATES CARPORT  
B INDICATES BALCONY



**FIRST FLOOR**  
SCALE: 1" = 10'

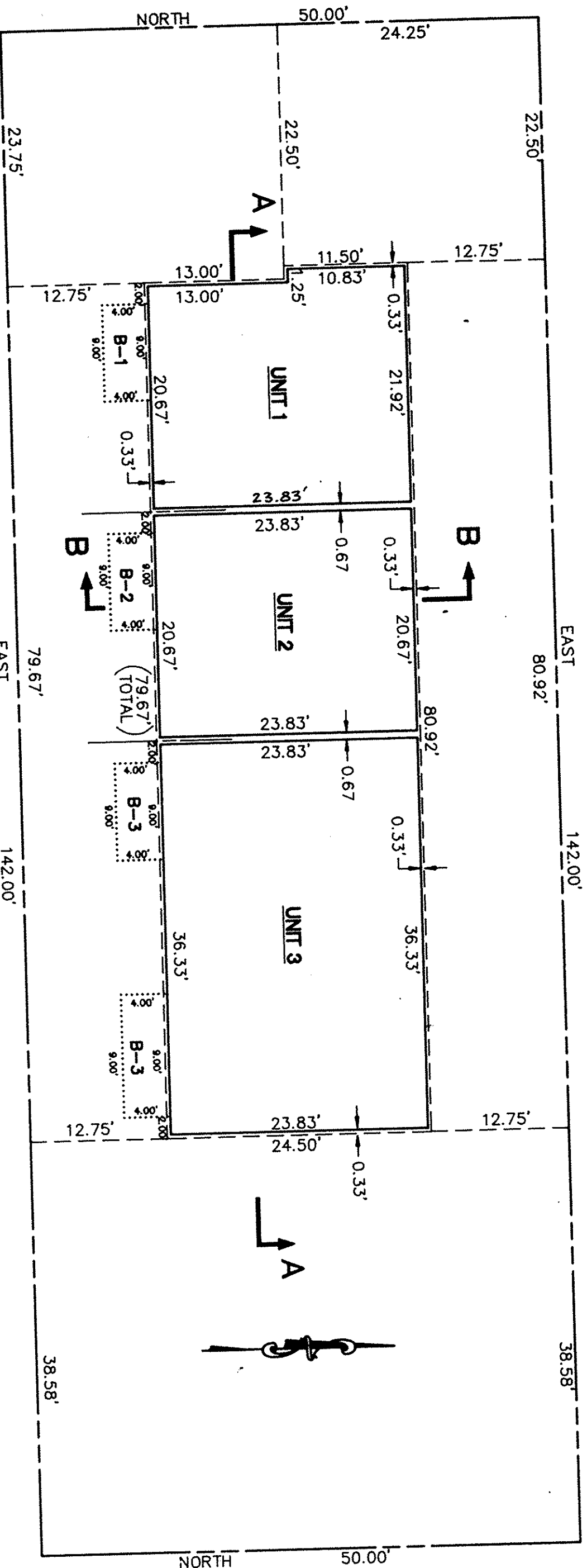
RIDGE ELEV = 128.66	
TOP PLATE	ELEV = 123.66
CEILING	ELEV = 122.66
FINISH FLOOR	ELEV = 114.58
CEILING	ELEV = 113.58
FINISH FLOOR ELEV = 105.50	



**SECTION B-B**  
N.T.S.

RIDGE		ELEV = 128.66
TOP PLATE		ELEV = 123.66
CEILING		ELEV = 122.66
F.F.		ELEV = 114.58
CEILING		ELEV = 113.58
F.F.		ELEV = 105.50

**SECTION A-A**  
N.T.S.



**SECOND FLOOR**  
SCALE: 1" = 10'

**TRACT NO. 8366**  
CONDOMINIUM SUBDIVISION AND PLAN  
CONSISTING OF THERE (3) SHEETS  
BEING ALL OF LOT 5 IN BLOCK 36, AS SHOWN ON THAT  
CERTAIN MAP ENTITLED "MAP NO. 3 OF THE TOWN OF  
LOS ALTOS" RECORDED IN BOOK M OF MAPS, AT PAGE 1,  
SANTA CLARA COUNTY RECORDED AND LYING WITHIN THE  
CITY OF LOS ALTOS, CALIFORNIA

**ADVANCED DEVELOPMENT**  
2933 BENJAMIN COURT  
SAN JOSE, CALIFORNIA 95124  
(408) 287-9830