

IN THE UNINCORPORATED TERRITORY OF  
THE COUNTY OF MONO, STATE OF CALIFORNIA.  
BEING A DIVISION OF LOTS 5, 6, 8, 9 AND 10  
OF BLOCK 20 & LOTS 8 THRU 11 INCLUSIVE OF  
BLOCK 19 OF SILVER LAKE PINES TRACT N<sup>o</sup> 5 AND  
A PORTION OF THE ABANDONED RIGHT-OF-WAY OF  
IDAHO STREET ALL AS SHOWN ON THE MAP OF  
SAID TRACT RECORDED IN BOOK 1 PAGE 11 OF MAPS  
RECORDS OF MONO COUNTY, CALIFORNIA.

Richard L. Pool, P.E.  
County Surveyor

*J. E. Ball*  
Planning Commission  
Chairman

Gordon C. Holmes  
Gordon C. Holmes  
RCE 10467

Filed for record this 17<sup>th</sup> day  
of Dec. 1974, at 11:30 A M  
in Book 1 of Parcel Maps  
at page 51 at the request of  
Burns R Eastman

Ann M. Walsh  
County Recorder

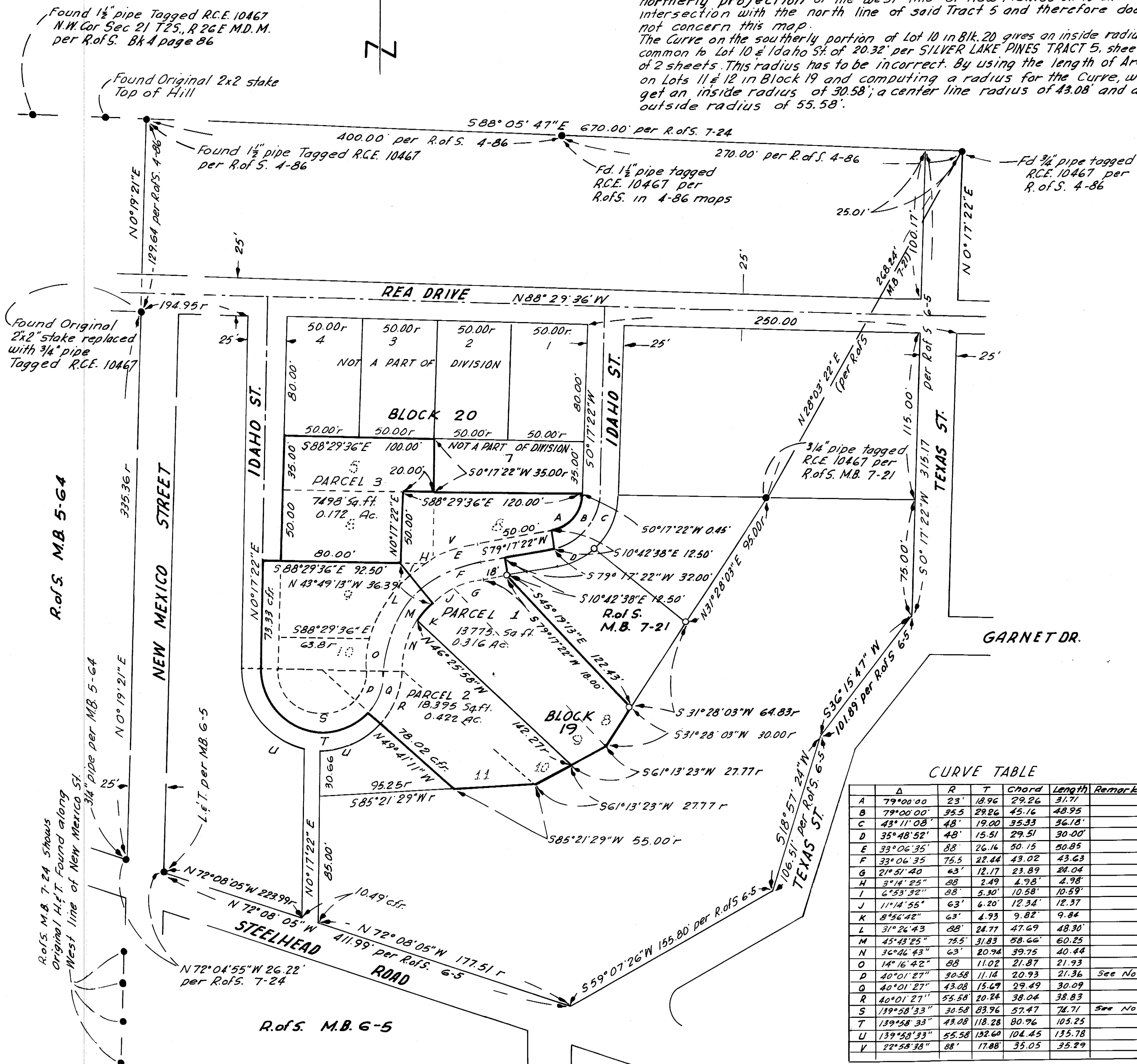
Record data shown on this map is  
from Silver Lake Pines Tract No 5 Sheet 2  
filed in Book 1 page 11 of Maps,  
Records of Mono County, California.

- - indicates a found point as noted
- - indicates 3/4" pipe tagged R.C.F. 10467 per R. of S. M.B. 7-21
- r - indicates record
- ctr - indicates computed from record

The record bearing of N88°05'47"W of the north line of Block 22 of Silver Lake Pines Tract 5 per map thereof was used as the basis of bearings shown on this Map.

There is a discrepancy on the north line of Tract 5 between the 1/4 cor. (the N.W. Cor. Lot 17 Blk 1) and the N.W. Cor. of Tract 5. The Lot count along said line yields a total distance 2694.91' while the tract map shows an overall distance of 2680.00'. The 2680' is the actual field measured distance. This office has conducted numerous surveys in this area and has determined that the problem of this lot excess lies west of the northerly projection of the west line of New Mexico St. to an intersection with the north line of said Tract 5 and therefore does not concern this map.

The Curve on the southerly portion of Lot 10 in Blk 20 gives an inside radius common to Lot 10 & Idaho St. of 20.32' per SILVER LAKE PINES TRACT 5, sheet 2 of 2 sheets. This radius has to be incorrect. By using the length of Arc on Lots 11 & 12 in Block 19 and computing a radius for the Curve, we get an inside radius of 30.58'; a center line radius of 43.08' and an outside radius of 55.58'.



CURVE TABLE

	$\Delta$	R	T	Chord	Length	Remarks
A	79°00'00"	23'	18.96	29.26	31.71	
B	79°00'00"	35.5	29.26	45.16	48.95	
C	43°11'08"	48'	19.00	35.33	36.18	
D	35°48'52"	48'	15.51	29.51	30.00	
E	33°06'35"	88'	26.16	50.15	50.85	
F	33°06'35"	75'	22.44	43.02	43.63	
G	21°51'40"	63'	12.17	23.89	24.04	
H	3°14'25"	88	2.49	4.98'	4.98'	
I	6°53'32"	88'	5.30'	10.58'	10.59'	
J	11°14'55"	63'	6.20'	12.34'	12.37	
K	8°56'42"	63'	4.93	9.82'	9.84	
L	31°26'43"	88'	24.71	47.69	48.30'	
M	45°43'25"	75.5	31.83	58.66'	60.25	
N	36°46'43"	63'	20.94	39.75	40.44	
O	14°16'42"	88	11.02	21.87	21.93	
P	40°01'27"	30.58	11.14	20.93	21.36	See Note
Q	40°01'27"	43.08	15.67	29.49	30.09	
R	40°01'27"	55.58	20.24	38.04	38.83	
S	139°58'33"	30.58	83.96	57.47	74.71	See Note
T	139°58'33"	43.08	118.28	80.96	105.25	
U	139°58'33"	55.58	192.60	104.45	135.78	
V	22°58'38"	88'	17.88'	35.05	35.29	

P.M. - Vol. 1, Pg. 51