

USA

MODOC

QUARTZ MACE MINE

USA

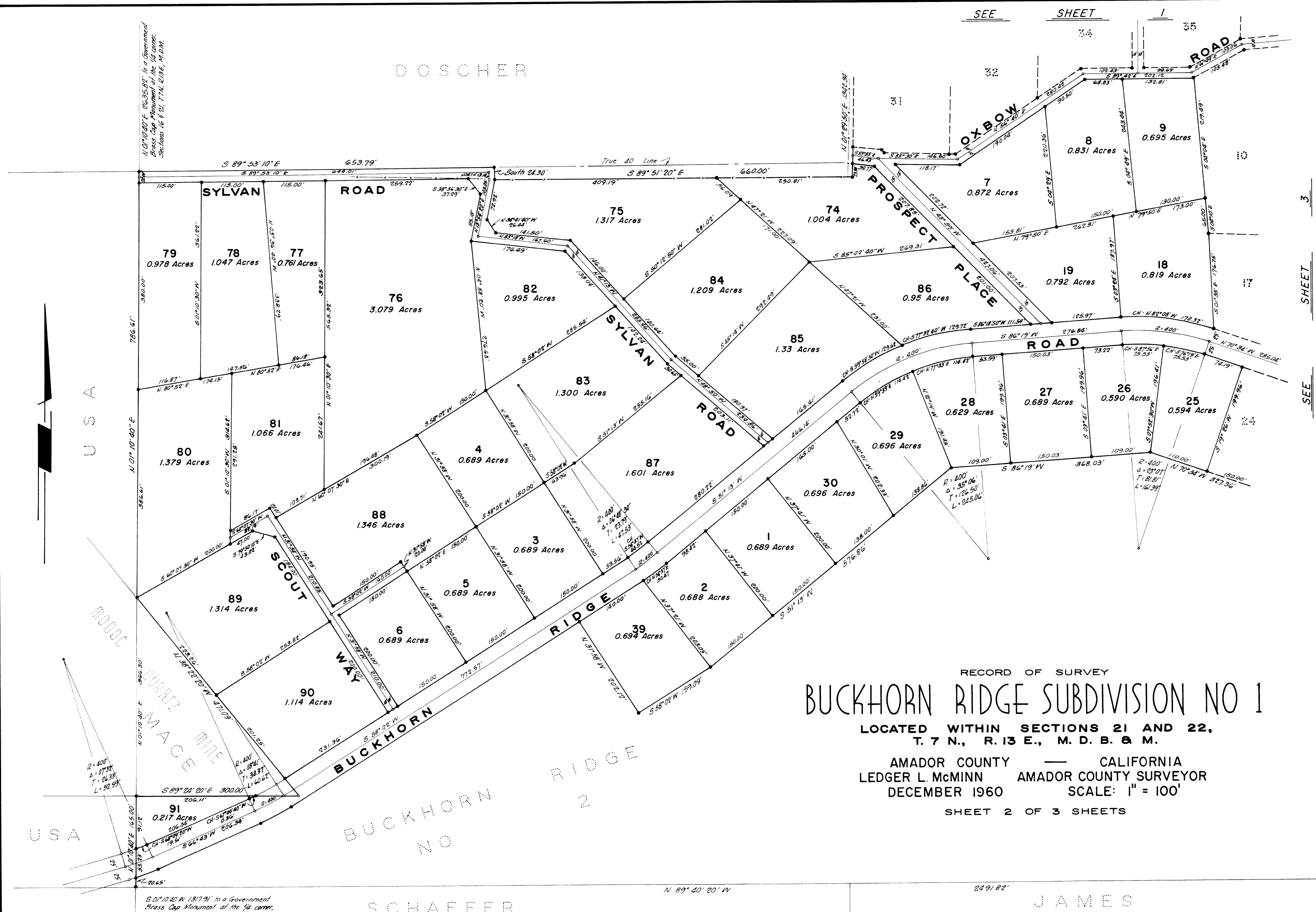
N 01° 00' 00" E 2635.82' to a Government Brass Cap Monument at the 1/4 corner, Sections 16 & 21, T. 7N, R. 13E, M. D.M.

S 01° 10' 40" W 1317.91' to a Government Brass Cap Monument at the 1/4 corner, Sections 21 & 28, T. 7N, R. 13E, M. D.M.

DOSCHER

SCHAEFER

BUCKHORN RIDGE NO 2



RECORD OF SURVEY

BUCKHORN RIDGE SUBDIVISION NO 1

LOCATED WITHIN SECTIONS 21 AND 22,
T. 7 N., R. 13 E., M. D. B. & M.

AMADOR COUNTY — CALIFORNIA
LEDGER L. McMINN AMADOR COUNTY SURVEYOR
DECEMBER 1960 SCALE: 1" = 100'

SHEET 2 OF 3 SHEETS

JAMES