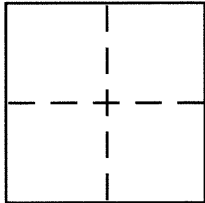


CORNER RECORD

City of BERKELEY County of ALAMEDA, California

Brief Legal Description CITY OF BERKELEY MONUMENT B4016



CORNER TYPE

Government Corner ☐ Control ☒
 Meander ☐ Property ☐
 Rancho ☐ Other ☐
 Date of Survey 1-15-2016

COORDINATES (Optional)

N. _____
 E. _____
 Zone _____ NAD27 ☐ NAD83 ☐
 NAD83 Epoch _____
 Elev. _____
 Vert. Datum: NGVD29 ☐ NAVD88 ☐
 Meas. Units: Metric ☐ Imperial ☐

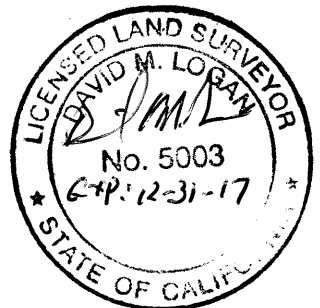
Corner – Left as found ☒ Found and tagged ☐ Established ☐ Reestablished ☐ Rebuilt ☐

Identification and type of corner found: Evidence used to identify or procedure used to establish or reestablish the corner:
**IN COMPLIANCE WITH SECTION 8771 OF THE PROFESSIONAL LAND SURVEYORS' ACT, THIS CORNER
 RECORD IS BEING FILED TO ESTABLISH THE POSITION OF AN EXISTING MONUMENT PRIOR TO
 SANITARY SEWER CONSTRUCTION.**

A description of the physical condition of the monument as found and as set or reset: SEE PAGE 2

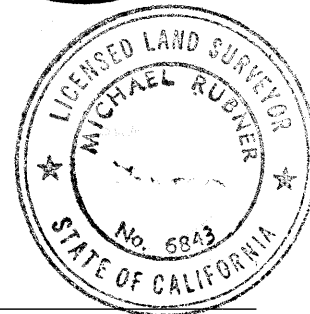
SURVEYOR'S STATEMENT

This Corner Record was prepared by me or under my direction in conformance with
 the Land Surveyor's Act on 1-15-2016
 Signed [Signature] P.L.S or R.C.E. No. 5003

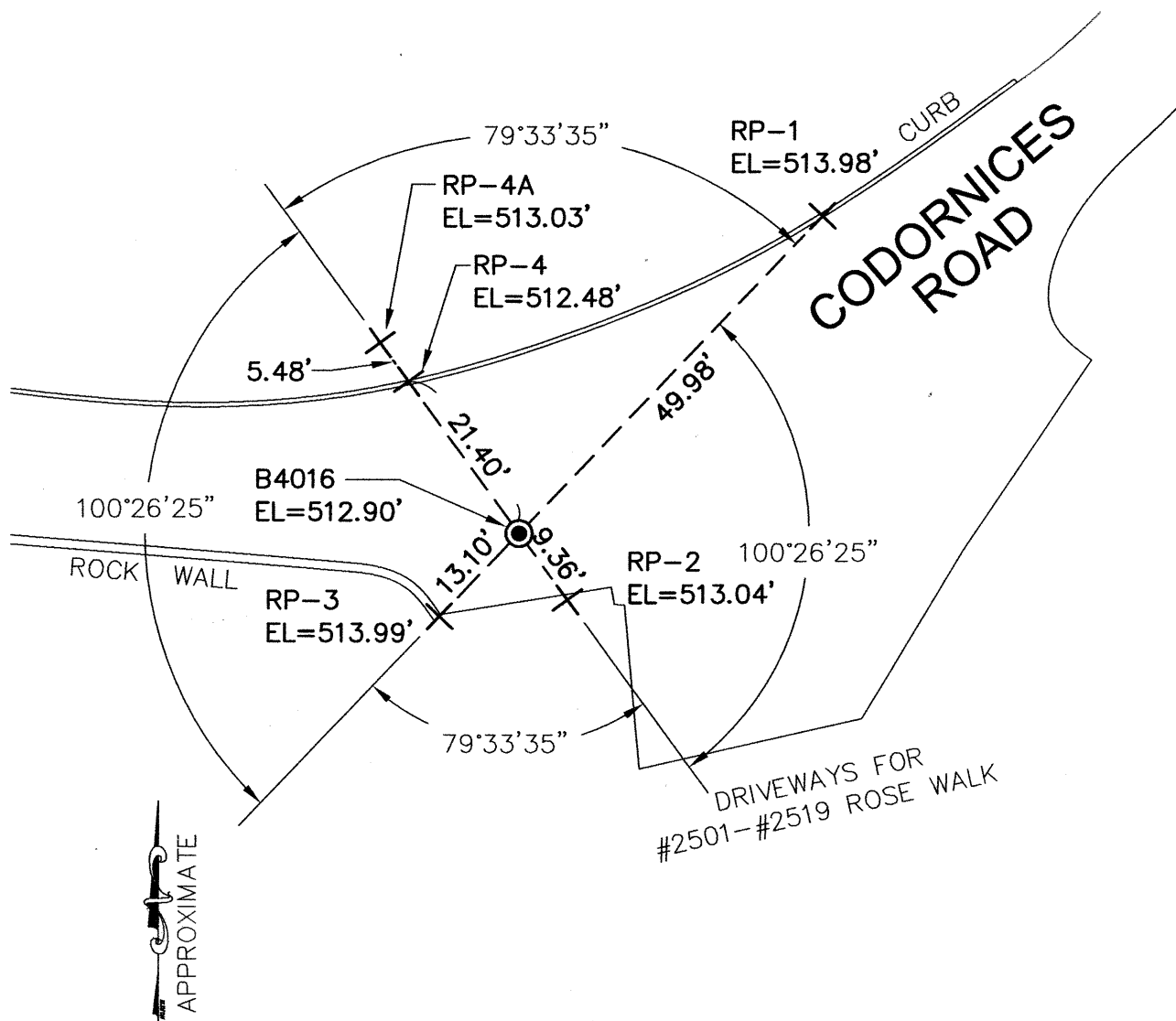


COUNTY SURVEYOR'S STATEMENT

This Corner Record was received 8 FEBRUARY, 2016
 and examined and filed 19 FEBRUARY, 2016
 Signed Michael Rubin P.L.S or R.C.E. No. 6843
 Title COUNTY SURVEYOR



County Surveyor's Comment _____



SCALE: 1"=20'

LEGEND

- ⊙ RAILROAD SPIKE CITY MONUMENT WITH A PUNCH MARK SET FLUSH IN ASPHALT ROADWAY
- + SET REFERENCE CROSS

NOTE:

THE EXISTING MONUMENT AS SHOWN IS REFERENCED BY STRAIGHT LINES BETWEEN RP-1 TO RP-3 AND RP-2 TO RP-4.