

County Surveyor's Office
Stanislaus County, Cal.

Swamp and Overflowed Lands.

Survey No 172 $\frac{3}{4}$

Township 3 South.

Range 7 East.

Sections 19, 20 & 29.

Fractional $\frac{1}{2}$ of S.E. $\frac{1}{4}$ Sec. 19.

" $\frac{1}{2}$ " S.W. $\frac{1}{4}$ " 20.

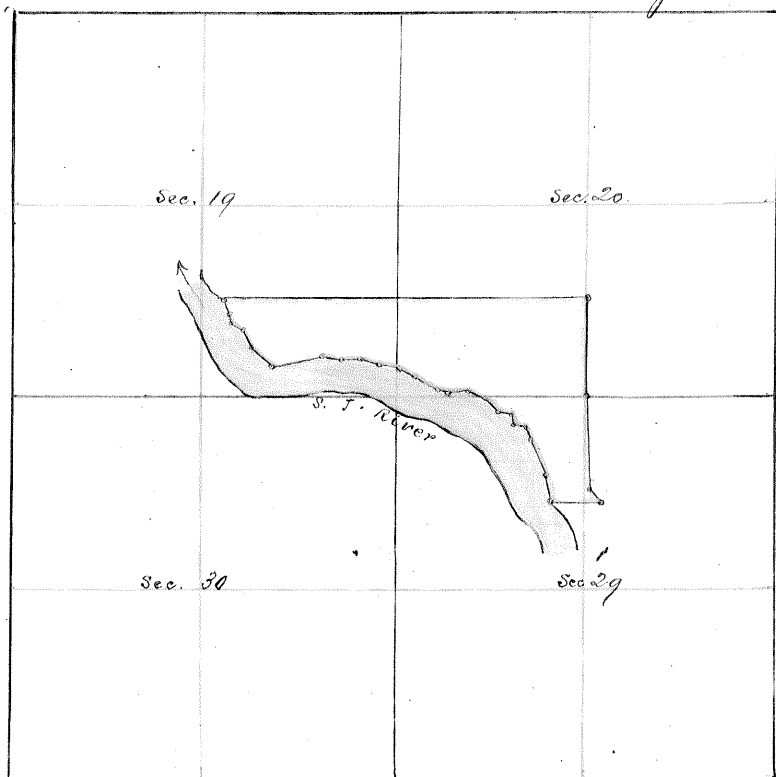
and fraction in N.E. $\frac{1}{4}$ of N.W. $\frac{1}{4}$ of section 29.

Base and Meridian of Mt Diablo.

Containing 121.13 Acres.

Surveyed October 18th 1862.

For Daniel W. Bralery.



Field Notes.

Beginning at a post and mound on the U.S. meander line where the east and west line, between the $\frac{1}{2}$ and the N.E. $\frac{1}{4}$ of section 29 Township 3, south range, 7 east, Mt Diablo meridian intersects the same, thence with the said U.S. meander line N $50\frac{1}{4}$ W 2.25 ch. N $7\frac{1}{2}$ W 19.20 ch. to $\frac{1}{4}$ sec. corner line between sec^s 20 & 29. thence N 20 chains to a post set as the N.E. corner of this survey, thence N 76 ch to a post on the right bank of the Stanislaus river, thence meander said river up stream on its right bank S 20° E 2.67 ch. S 30° E 4.12 ch. S 32° E 2.82 ch. S $68\frac{1}{2}^{\circ}$ E 1 ch. S $36\frac{1}{4}^{\circ}$ E 1.81 ch. S $44\frac{1}{2}^{\circ}$ E 3.80 ch. S $43\frac{1}{2}^{\circ}$ E 2.94 ch. N $67\frac{1}{2}^{\circ}$ E 13.11 ch. S 79° E 3.69 ch. S $85\frac{3}{4}^{\circ}$ E 5 ch. S $62\frac{1}{2}^{\circ}$ E 2.83 ch. S $63\frac{1}{2}^{\circ}$ E 5.14 ch. S $62\frac{1}{2}^{\circ}$ E 10 ch. S $78\frac{1}{2}^{\circ}$ E 1.80 ch. N 85° E 2.88 ch. S 79° E 4.28 ch. S 65° E 1.33 ch. S 50° E 3.20 ch. S $66\frac{1}{2}^{\circ}$ E 2 ch. S 20° E 2.30 ch. S 72° E 2.58 ch. S 35° E 1.68 ch. S 30° E 4.26 ch. S 21° E 5.34 ch. S 10° E 5.75 chains to post on right bank of the San Joaquin river, thence east 10.85 chains to point of beginning

Run by the true Meridian; Magnetic Variation $15^{\circ}45'$ East.

Surveyed in accordance with the Act of the Legislature concerning Swamp and Overflowed Lands, approved April 18th 1859, and the instruction of the Surveyor-General.

E. D. Beard
Co. Surveyor Stanislaus Co.
By A. G. Stables
Deputy