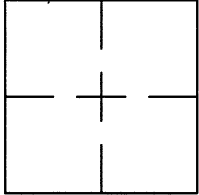


CORNER RECORD

Document Number CR 9559

City of EDEN TOWNSHIP

County of ALAMEDA, California

Brief Legal Description PIN MONUMENT LOCATED WITHIN THE INTERSECTION OF CAROLYN ST
AND WELLINGTON WAY.

CORNER RECORD

Government Corner ☐ Control ☒
 Meander ☐ Property ☐
 Rancho ☐ Other ☐
 Date of Survey 12/7/16

COORDINATES
(Optional)

N. 2082883
 E. 6095224
 Zone Datum
 Elev.

Corner — Left as found ☒ Found and tagged ☐ Established ☐ Reestablished ☐ Rebuilt ☐

Identification and type of corner found: Evidence used to identify or procedure used to establish or reestablish the corner:
 FOUND PIN IN CONCRETE IN MONUMENT WELL.

SEE CR 8820

THIS POINT WAS FOUND IN GOOD CONDITION AFTER A CONSTRUCTION PROJECT IN THE VICINITY.

A description of the physical condition of the monument as found and as set or reset:

FOUND AND SET POINTS AS SHOWN ON PAGE 2.

THE TIES SHOWN HEREON ARE FOR THE PURPOSE OF PERPETUATING FOUND MONUMENTATION.

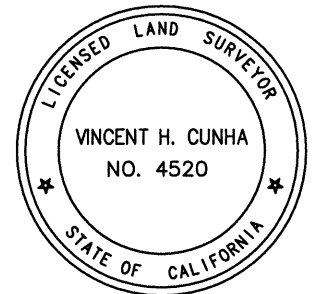
NO CLAIM IS MADE AS TO THE RELATIONSHIP OF THE POINTS OR LINES SHOWN HEREON TO

TRUE BOUNDARY LOCATIONS.

SURVEYOR'S STATEMENT

This Corner Record was prepared by me or under my direction in conformance with
 the Land Surveyors' Act on DECEMBER 14, 2016.

Signed Vincent H. Cunha L.S. Number LS 4520
 VINCENT H. CUNHA



COUNTY SURVEYOR'S STATEMENT

This Corner Record was received 12-29 2016 and examined
 and filed 01-25 2017.

Signed Albert Jordan Title Deputy County Surveyor
 PS 6623



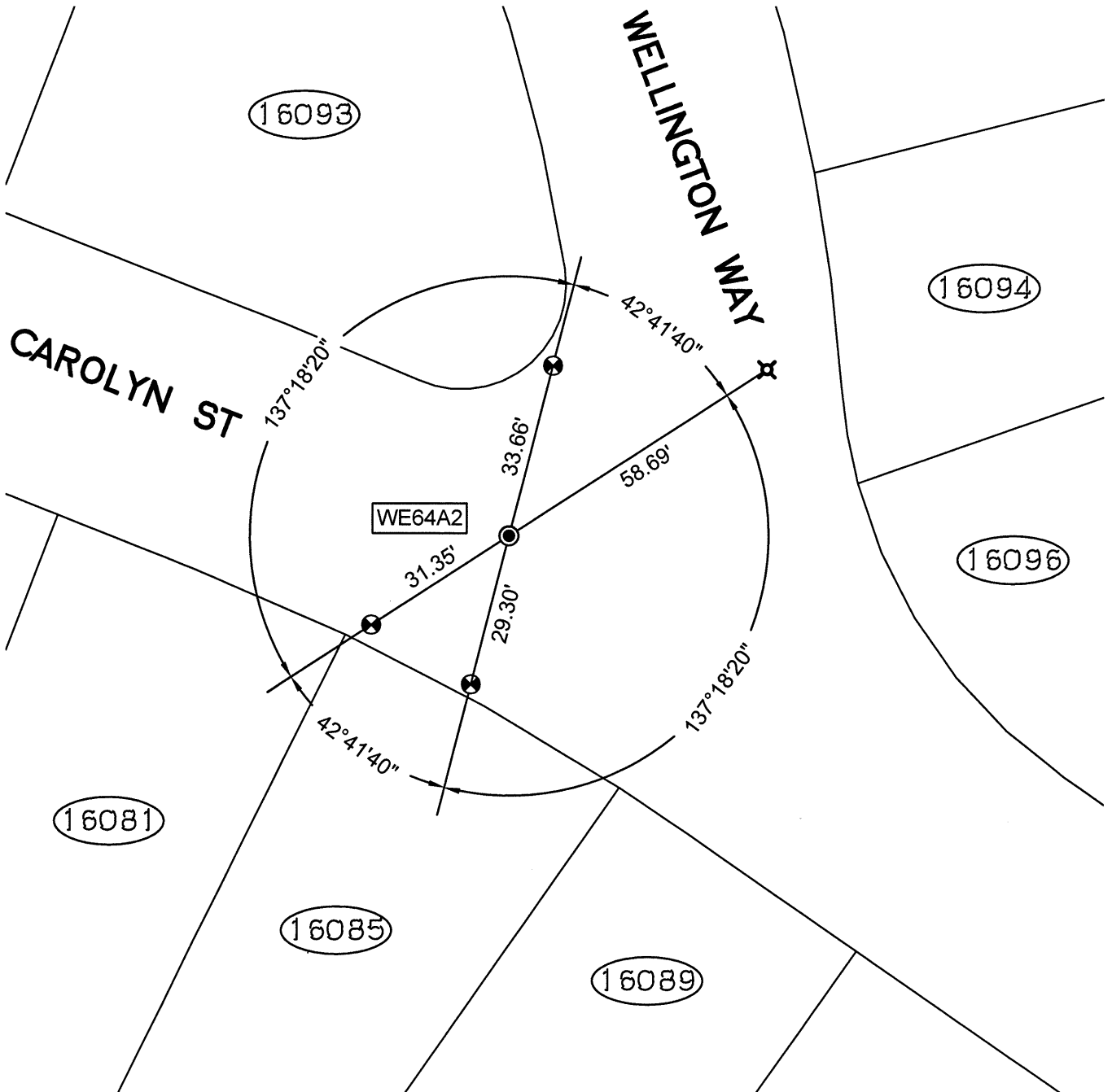
County Surveyor's Comment

SPEC-2303-POST

SCALE: 1"=30'

LEGEND

- FOUND PIN IN CONCRETE IN MONUMENT WELL
- ⊗ FOUND CUT CROSS IN WALK
- ✕ FOUND CUT CROSS IN CURB
- ✕ FOUND MAG AND SHINER
- FOUND REBAR & CAP STAMPED "CEI RP"
- AA##A# ALAMEDA COUNTY MONUMENT ID
- 19592 REFERENCE STREET ADDRESS



216129-Carolyn-CR02 Post