

- ALL CIRCUITRY/CONDUIT FOR FRONT LINE EQUIPMENT TO BE ROUTED IN CASEWORK TO J-BOX IN WALL AND CONCEALED IN THE WALL.
- PROVIDE SEALS AND EXPANSION COUPLINGS ON ALL CONDUITS ENTERING OR LEAVING AREAS OF TEMPERATURE DIFFERENCE. REFER TO DETAIL 6/E-400 FOR ADDITIONAL INFORMATION.
- PROVIDE (2) 1 1/2" CONDUITS WITH PULL STRINGS FROM CASH REGISTER TO MANAGER'S STATION. SEE P.O.S. AND SERVICE LINE ELEVATIONS, DETAIL 3/E-200.
- SEE 'MANAGER'S STATION ELEVATION', DETAIL 1/E-200 FOR ADDITIONAL OUTLETS AND J-BOXES.
- ANSUL PULL STATION. REFER TO DETAIL 2/E-400.
- REFER TO 'FREEZER LTG AND DOOR HEATER WIRING DIAGRAM', DETAIL 10/E-400.
- REFER TO 'COOLER EVAPORATOR COIL' WIRING DIAGRAM, DETAIL 8/E-400.
- SHOW WINDOW RECEPTACLE SHALL BE CONTROLLED VIA SWITCH "b". REFER TO LIGHTING SWITCHBANK SCHEDULE, DETAIL 4/E-101. RECEPTACLE IS EXISTING WITH CONDUIT AND PULL WIRE BACK TO THE PANEL. PROVIDE CIRCUIT AND CONNECTIONS AND WIRE TO LIGHTING SWITCHBANK.
- W.P. J-BOX, FOR SIGNAGE. COORDINATE LOCATION WITH ARCHITECT /OWNER/ SIGN PACKAGE SUPPLIER. SIGN DISCONNECT PROVIDED BY SIGN SUPPLIER.
- REFER TO 'FREEZER EVAPORATOR COIL' WIRING DIAGRAM, DETAIL 9/E-400. THE FAN COIL UNIT IS POWERED FROM THE CONDENSER UNIT ON THE ROOF VIA A DISCONNECT CONNECTION. HEAT TAPE IS PROVIDED AND INSTALLED BY ELECTRICIAN.
- NOT USED.
- PROVIDEA SURFACE MOUNTED 20A, GFCI RECEPTACLE WITH IN-USE COVER. MOUNT TO TOP OF COLUMN. CONDUIT SHALL BE RUN FROM WEATHERPROOF J-BOX ON ROOF ALONG SIDE OF PERGOLA PARAPET THAN DOWN AND THRU THE ROOF. COORDINATE PLACEMENT OF THE RECEPTACLE WITH THE CANOPY SHOP DRAWINGS TO AVOID INTERFERENCE WITH FUTURE MOTORIZED SCREENS AND ELECTRIC HEATERS.
- HOOD CONTROL PANEL/ANSUL SYSTEM CABINET. MOUNT CABINET DIRECTLY BELOW T-BAR CEILING.
- PROVIDE 2-GANG J-BOX @ 48" AFF FOR HOOD CONTROL SWITCHES. REFER TO SHEETS M-400 AND M-401.
- 1" CONDUIT STUB UP LOCATION IN STAINLESS STEEL POWER PANEL FOR ISLAND KITCHEN EQUIPMENT CONNECTION. REFER TO DETAIL 2/A-109. COORDINATE LOCATION WITH ARCHITECT / OWNER.
- ROUTE CABLING / CIRCUITRY THROUGH CONDUIT IN SLAB.
- UTILIZE SEAL TIGHT CONDUIT FOR ALL WIRING INCLUDED ALONG LOW WALL PANEL.
- ALL DEVICES UNDER HOOD TO BE PROVIDED WITH AND INSTALLED WITH GROUND FAULT CIRCUIT BREAKERS AND WATER- PROOFING BOX (RED DOT#CKSUV) REFER TO COOKLINE ELECTRICAL ELEVATIONS, DETAIL 6/E-200. ROUTE HOMERUN THROUGH CONTACTOR INTERFACED WITH THE HOOD FIRE SUPPRESSION SYSTEM. REFERENCE DETAIL 13/E-400 FOR ADDITIONAL INFORMATION.
- SIMPLEX RECEPTACLE TO BE CONNECTED TO BACK-OF-HOUSE LIGHTING CIRCUITRY/CONTROL. CONTRACTOR TO PROVIDE PIGTAIL FROM CIRCULATION PUMP.
- PROVIDE WEATHERPROOF RECEPTACLE FOR HEAT TAPE. COORDINATE FINAL LOCATION WITH REFRIGERATION INSTALLER.
- ELECTRIC GRILL '23E': FEED WITH 3#6, #10 GROUND, 3/4" CONDUIT. REFER TO DETAIL 4/E-200. ROUTE HOMERUN THROUGH CONTACTOR INTERFACED WITH THE HOOD FIRE SUPPRESSION SYSTEM. REFERENCE DETAIL 13/E-400 FOR ADDITIONAL INFORMATION.
- NOT USED.
- PROVIDE DUPLEX RECEPTACLE AND DATA OUTLET FOR TAKEOUT ORDER SCREEN. FLUSH MOUNT IN BOTTOM OF SOFFIT.
- PROVIDE WATERPROOF COVER, IN-USE, RED DOT (#CKSUV).
- (2) 1" CONDUITS WITH PULL STRINGS FOR FUTURE ELECTRIC HEATERS. CONDUITS TO BE RUN UNDERGROUND FROM CONTACTOR ENCLOSURES TO THE PERGOLA COLUMN, THEN STUBBED UP IN THE COLUMN PLATE WITH RIGID ELBOWS. RUN CONDUITS UP COLUMN TO WEATHER-PROOF J-BOXES ON PERGOLA ROOF.
- SEE DRINK STATION ELEVATION, DETAIL 5/E-200.
- SEE 3/E-200 FOR SERVICE LINE ELEVATIONS.
- SEE DEVICE/RECEPTACLE SCHEDULE 3/E-400.
- NOT USED.
- OLO TICKET PRINTER. PROVIDE RECEPTACLE AND COMBINATION DATA/TELEPHONE JACK BELOW PRINTER. BOTTOM OF PRINTER TO BE 4'-10" AFF.
- REFER TO DETAIL #9/E-200 FOR LOCATION/INSTALLATION OF CO2 MONITOR.
- SEE SWITCH BANK ELEVATION , DETAIL 1/E-200.
- MOUNT CAPTIVEAIRE SENSOR ON SOFFIT NEAR DRIVE-THRU. COORDINATE LOCATION WITH MECHANICAL. REFER TO DETAIL M-401 FOR ADDITIONAL INFORMATION.
- FLY LIGHT RECEPTACLE SHALL BE INSTALLED WITH A RECESSED CLOCK OUTLET. TYPICAL FOR ALL LOCATIONS. REFER TO DETAIL 10/E-200 FOR BOH LOCATION.
- SEE SECURITY KEY PAD ELEVATION, DETAIL 1/E-200.
- CONNECT HEAT LAMPS TO COUNTER-MOUNTED SWITCH PROVIDED AND INSTALLED BY CONTRACTOR. COORDINATE EXACT LOCATION WITH KITCHEN EQUIPMENT PROVIDER.
- PANDA EXPRESS TO PROVIDE CO2 MONITOR. E.C. TO MOUNT OVER J-BOX. PROVIDE ALL OTHER REQUIRED CONNECTIONS AND COMPONENTS FOR A FULLY WORKING SYSTEM.
- PROVIDE DUPLEX RECEPTACLE BELOW TABLE TOP. REFER TO LATEST PANDA EXPRESS FURNITURE PLAN FOR LAYOUT.
- FIRE SUPPRESSION SHUTDOWN LOCATED ABOVE THE CEILING. REFER TO DETAIL 13/E-400.
- THAWING CABINET. PROVIDE A 20A, 125/250V RECEPTACLE WITH 3#12, 1#12G IN 3/4" CONDUIT.
- 3/4" CONDUIT WITH PULL STRING FOR FUTURE SHADES. CONDUITS TO BE RUN UNDERGROUND FROM PANEL 'B' TO THE PERGOLA THEN STUBBED UP INTO THE COLUMN PLATE WITH RIGID ELBOWS. RUN CONDUIT UP COLUMN TO WEATHER-PROOF J-BOXES ON PERGOLA ROOF.
- PROVIDE (4) 60A, 2P, 240V CONTACTORS WITH 120V COIL ABOVE THE CEILING FOR THE PERGOLA HEATERS. PROVIDE (4) RECESSED SWITCHES ON THE WALL TO OPERATE THE COILS. PROVIDE A 1 1/2" CONDUIT WITH (6) #8 & #10 GROUNDS FROM PANEL 'A' TO THE CONTACTOR ENCLOSURE. PROVIDE CIRCUIT A '53' FOR THE COILS. PROVIDE EMPTY CONDUITS WITH PULL STRINGS FOR WIRING DOWN TO SWITCHES.
- INSTALL CONDUIT ON INSIDE OF PERGOLA PARAPET FROM WEATHER-PROOF J-BOX. THEN PENETRATE THE ROOF AND MAKE THE CONNECTION TO THE WEATHER-PROOF RECEPTACLE.
- 3/4" CONDUIT FOR PERGOLA GENERAL RECEPTACLE AND STRING LIGHTS. CONDUIT TO BE RUN FROM PANEL 'B' UNDERGROUND TO THE PERGOLA, THEN STUBBED UP INTO THE COLUMN PLATE WITH RIGID ELBOWS. RUN CONDUIT UP COLUMN TO WEATHER-PROOF J-BOX ON THE ROOF.
- 3/4" CONDUIT TO BUILDING FOR MUSIC. REFER TO SHEET E-102 FOR CONTINUATION.
- COORDINATE CONDUIT RUNS WITH OTHER TRADES UNDERGROUND PIPES, ETC.

POWER PLAN KEYED NOTES

3

NOT TO SCALE

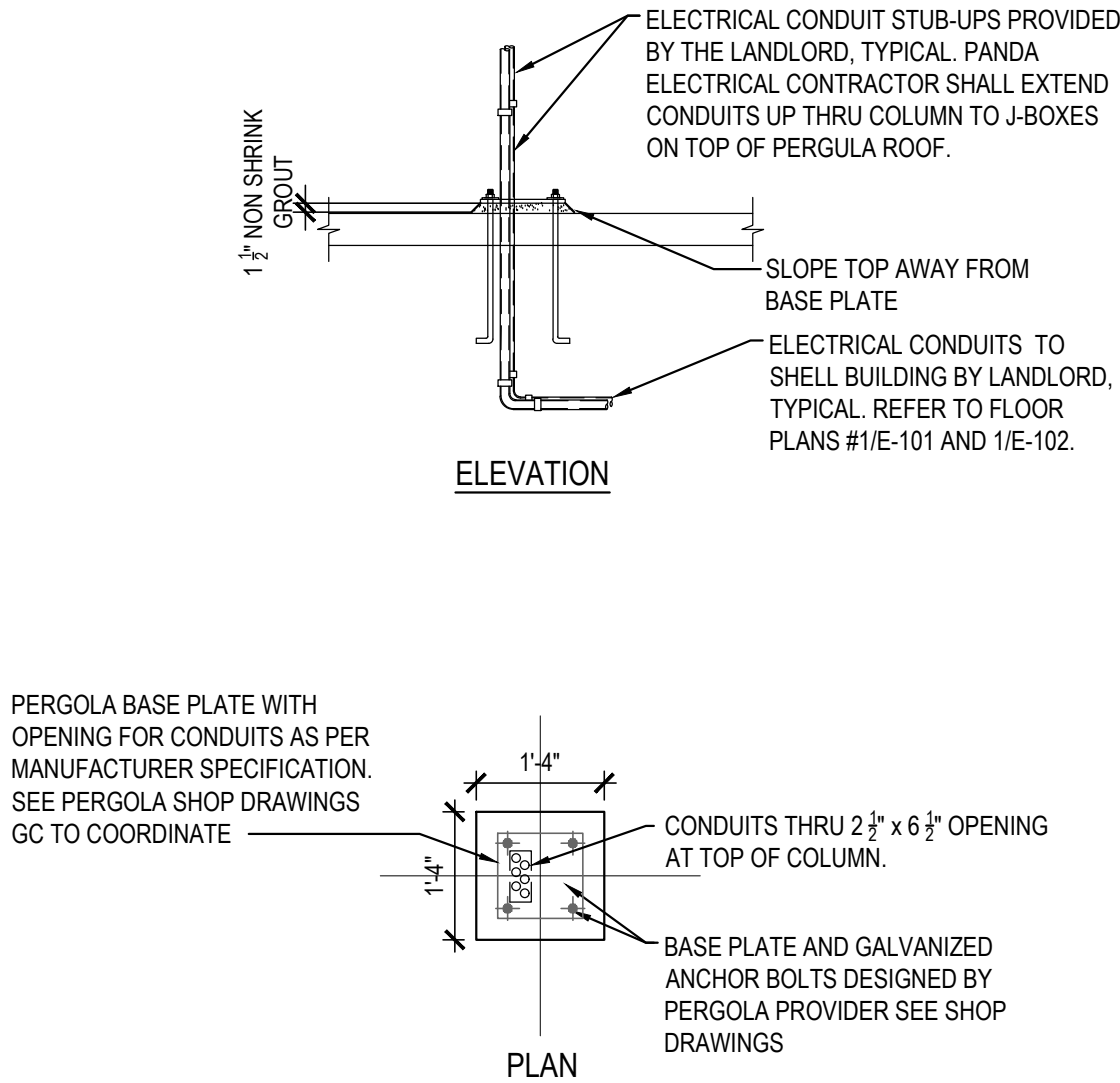
E-100

POWER PLAN GENERAL NOTES

2

NOT TO SCALE

E-100

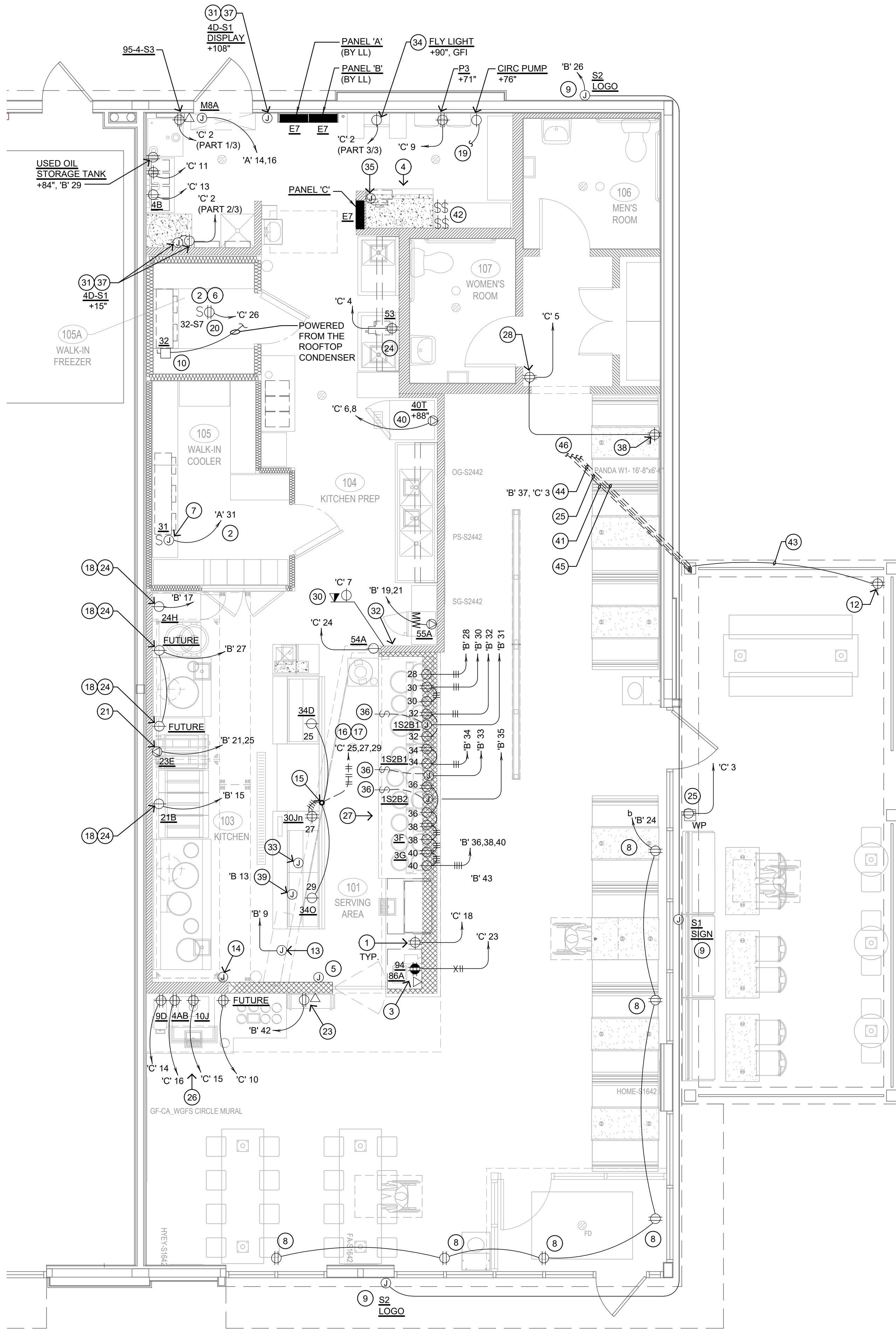


CANOPY FOUNDATION DETAIL 4

Scale: N.T.S.

E-100

- VERIFY ALL HVAC & KITCHEN EQUIPMENT PRIOR TO ROUGH IN.
- ALL TELEPHONE/DATA/TV CABLES AND WIRES, TERMINATIONS AND ALL REQUIRED CABLE AND JACKS WILL BE INSTALLED BY A THIRD PARTY.
- POWER SUPPLY FOR COMPUTER AND CASH REGISTER (81, & 86, OR 87A, & 81) SHALL BE ON THE SAME CIRCUIT BREAKER, WITH AN ISOLATED GROUND & ORANGE RECEPTACLE.
- ALL CIRCUITRY SHOWN WITHOUT TICKS SHALL HAVE (2) WIRES PLUS EQUIPMENT GROUNDING CONDUCTOR.
- ALL MULTI-WIRE BRANCH CIRCUITS SHALL HAVE SEPARATE NEUTRALS TO MEET THE REQUIREMENTS OF 2017 NEC 210.4(B).
- TRANSFORMERS SHALL BE MOUNTED ABOVE CEILING AND BELOW TRUSSES WITH LOW VOLTAGE WIRING FEEDING ALL EXTERIOR CANOPY LIGHTS.
- ALL UNDERGROUND CONDUIT SHALL BE 12" BELOW THE FINISHED FLOOR.
- ALL OUTLETS IN FIRE RATED WALLS SHALL MAINTAIN A 24" MINIMUM HORIZONTAL SPACING FROM OUTLETS ON THE REVERSE SIDE OF THE WALL UNLESS FIRE RATED MEASURES ARE INSTALLED.



POWER FLOOR PLAN 1

Scale: 1/4"=1'-0"

E-100



PANDA EXPRESS, INC.
1683 Walnut Grove Ave.
Rosemead, California
91770

Telephone: 626.799.9898
Facsimile: 626.372.8288

All ideas, designs, arrangement and plans indicated or represented by this drawing are the property of Panda Express Inc. and were created for use on this specific project. None of these ideas, designs, arrangements or plans may be used by or disclosed to any person, firm, or corporation without the written permission of Panda Express Inc.

REVISIONS:

ISSUE DATE:

LANDLORD REVIEW	03-04-2022
FINAL LANDLORD REV.	06-20-2022
PERMIT	07-19-2022
BID SET	10-06-2022
CONSTRUCTION SET	01-16-2023

DRAWN BY: G. COLLINS

PANDA PROJECT #: D7861

ARCH PROJECT #: JCDT21-0268

I certify that these documents were prepared or approved by me, and that I am a duly licensed architect/engineer under the laws of the State of Maryland, license number

Sean P. Pick-Kell 52379 expiration date 03-08-2024

NORR
ARCHITECTS BUILDERS PLANNERS

PANDA EXPRESS

TRUE WARM & WELCOME
10300 Mill Run Circle
Owings Mills, MD 21117

E-100

POWER FLOOR PLAN

TRUE WARM & WELCOME 2300 R6 RR

CONSTRUCTION SET

01-16-2023