

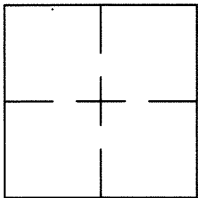
CORNER RECORD

Document Number CR 9350

City of EDEN TOWNSHIP

County of ALAMEDA, California

Brief Legal Description PIN MONUMENT LOCATED WITHIN ASHFIELD AVE



CORNER RECORD

Government Corner ☐ Control ☒  
Meander ☐ Property ☐  
Rancho ☐ Other ☐  
Date of Survey 11/17/16

COORDINATES  
(Optional)

N. 2078970±  
E. 6104929±  
Zone \_\_\_\_\_ Datum \_\_\_\_\_  
Elev. \_\_\_\_\_

Corner — Left as found ☒ Found and tagged ☐ Established ☐ Reestablished ☐ Rebuilt ☐

Identification and type of corner found: Evidence used to identify or procedure used to establish or reestablish the corner:  
FOUND PIN IN CONCRETE IN MONUMENT WELL.

THIS POINT WAS REFERENCED PRIOR TO A CONSTRUCTION PROJECT IN THE VICINITY.

A description of the physical condition of the monument as found and as set or reset: \_\_\_\_\_  
FOUND AND SET POINTS AS SHOWN ON PAGE 2.

THE TIES SHOWN HEREON ARE FOR THE PURPOSE OF PERPETUATING FOUND MONUMENTATION.

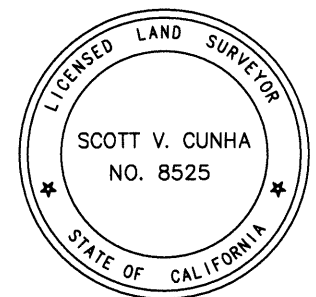
NO CLAIM IS MADE AS TO THE RELATIONSHIP OF THE POINTS OR LINES SHOWN HEREON TO

TRUE BOUNDARY LOCATIONS.

SURVEYOR'S STATEMENT

This Corner Record was prepared by me or under my direction in conformance with  
the Land Surveyors' Act on NOVEMBER 28, 2016.

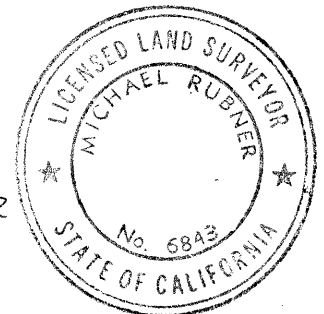
Signed Scott V Cunha L.S. Number LS 8525  
SCOTT V. CUNHA



COUNTY SURVEYOR'S STATEMENT

This Corner Record was received 5 DECEMBER 2016 and examined  
and filed 3 FEBRUARY 2017.

Signed Michael Rubner Title COUNTY SURVEYOR



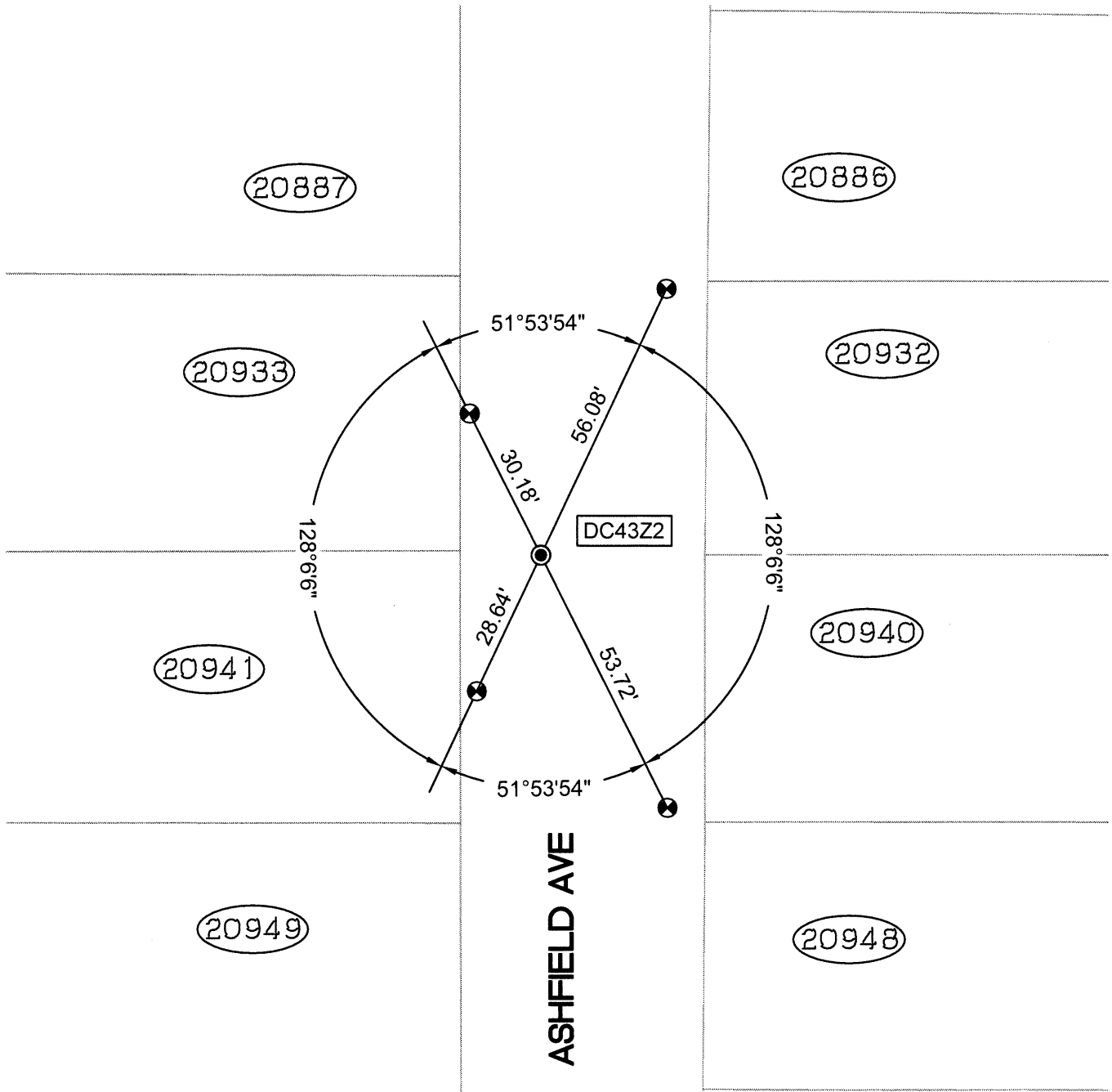
County Surveyor's Comment \_\_\_\_\_

SPEC-2315-PRE

SCALE: 1"=30'

## LEGEND

- FOUND IRON PIN IN CONCRETE IN MONUMENT WELL
- ⊗ SET CUT CROSS IN WALK
- ✕ SET CUT CROSS IN CURB
- ✕ SET MAG AND SHINER
- SET REBAR & CAP STAMPED "CEI RP"
- AA### ALAMEDA COUNTY MONUMENT ID
- 19592 REFERENCE STREET ADDRESS



216178-ASHFIELD-CR02