

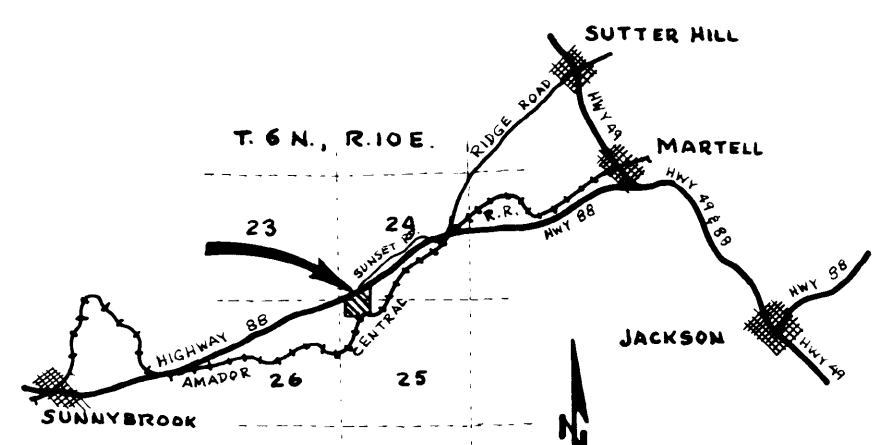
SUNSET VIEW CEMETERY

RECORD OF SURVEY-PLOT LAYOUT MAP FOR GREGG AND NANCY JOHNSON

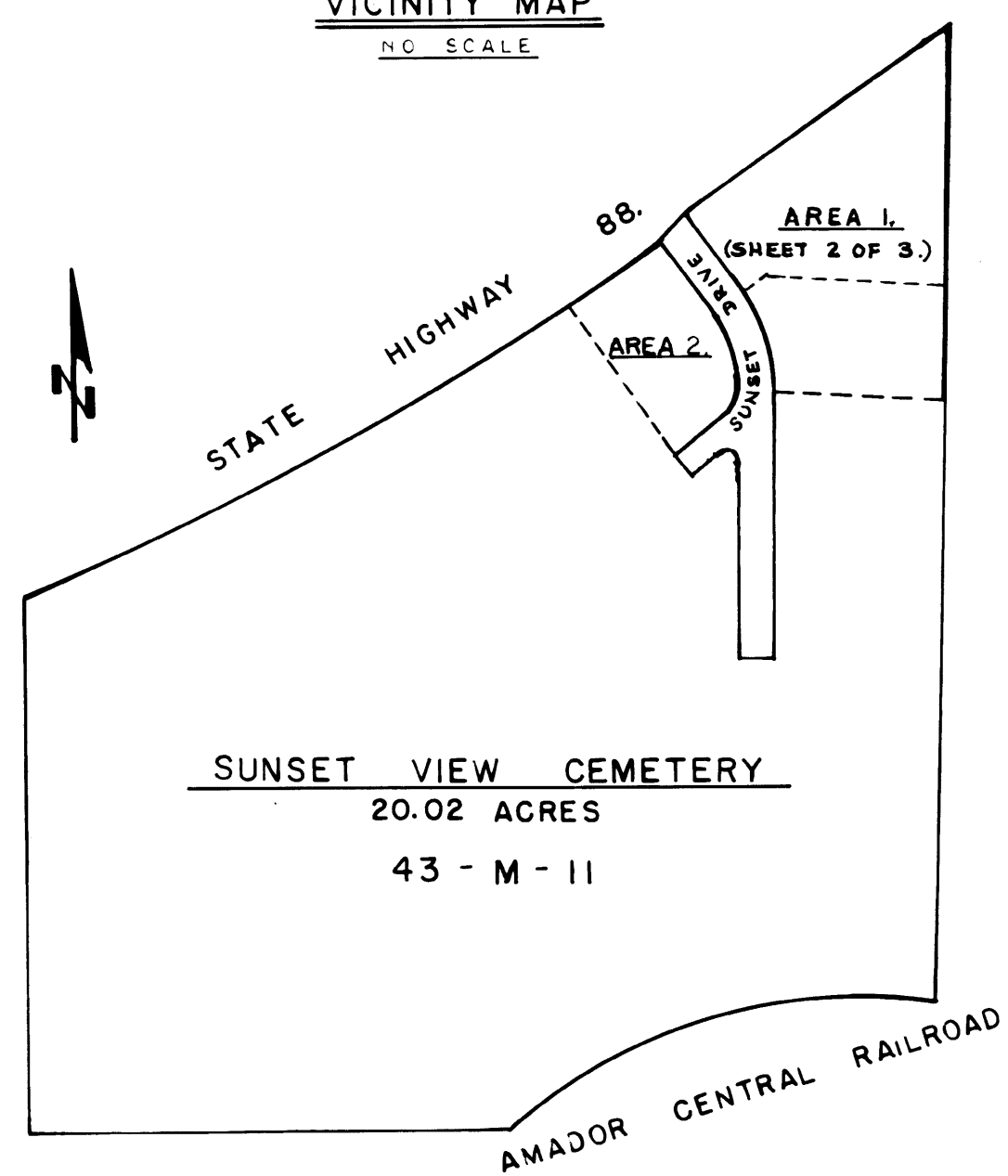
BEING A PORTION OF SECTIONS 24 & 25, T.6N., R.10E., M.D.M., AMADOR COUNTY, CALIFORNIA.
SCALE: 1" = 20'
PER 43-M-II.
JULY, 1990

NOTES & LEGEND

- FOUND 5/8" REBAR WITH 2" ALUMINUM CAP STAMPED L.S. 5257, PER 43-M-II.
- FOUND 6"x6" DIV. OF HWYS CONCRETE MONUMENT.
- () RECORD DATA PER 43-M-II.
- SET 5/8" REBAR WITH 2" ALUMINUM CAP STAMPED L.S. 5257
- - - - - EXISTING BENDER BOARD
- ||||| OPEN SPACE

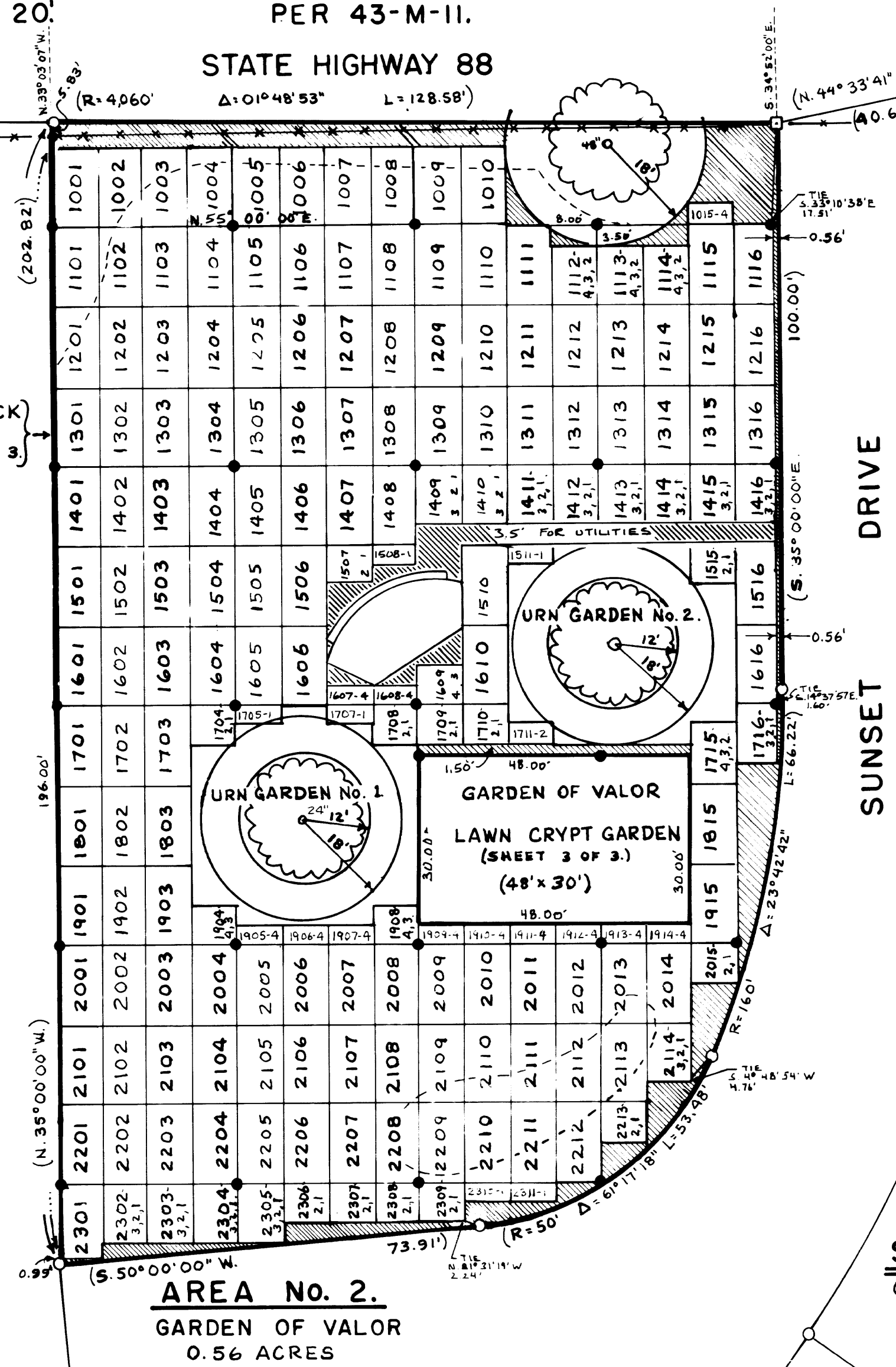


VICINITY MAP
NO SCALE



PROPERTY MAP
SCALE: 1" = 200'

TYPICAL:
4-GRAVE BLOCK
8' x 14'
SEE SHEET 3 OF 3

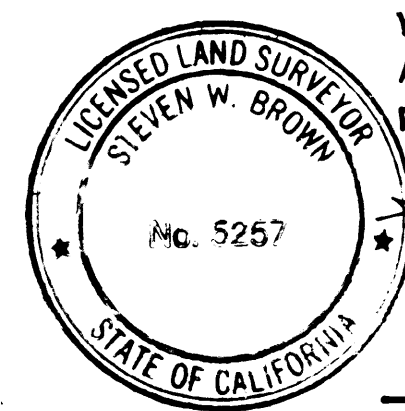


GARDEN OF
GOLDEN MEMORIES

DRIVE
SUNSET

SURVEYOR'S STATEMENT

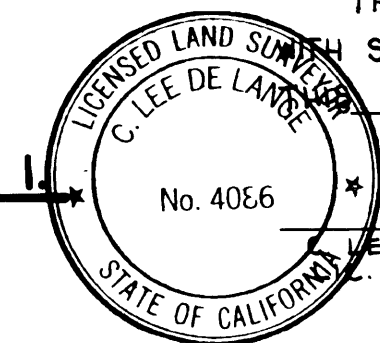
THIS MAP CORRECTLY REPRESENTS A SURVEY MADE BY ME OR UNDER MY DIRECTION IN CONFORMANCE WITH THE REQUIREMENTS OF THE LAND SURVEYOR'S ACT AT THE REQUEST OF GREGG JOHNSON IN FEBRUARY, 1989.



Steven W. Brown
STEVEN W. BROWN, L.S. 5257.
LIC. EXP. 12/31/91.

COUNTY SURVEYOR'S STATEMENT

THIS MAP HAS BEEN EXAMINED IN ACCORDANCE WITH SECTION 8766 OF THE LAND SURVEYORS' ACT 4 DAY OF Sept., 1990



C. Lee De Lange
C. LEE DELANGE, L.S. 4086, DEPUTY,
LIC. EXP. 6/30/92.

RECORDER'S STATEMENT

FILED THIS 10th DAY OF Sept., 1990
AT 8:59 A.M. IN BOOK 44 OF MAPS AND
PLATS AT PAGE 84, AT THE REQUEST OF
THE AMADOR COUNTY SURVEYOR.
FEE: \$ 13.00, P.D.

008856

Sheldon D. Johnson
SHELDON D. JOHNSON
AMADOR COUNTY RECORDER.

Lyndee R. Walden
DEPUTY

SCALE: 1" = 20'
0 10 20 30 40
SCALE IN FEET.

CONSTRUCTION
NORTH

STEVEN W. BROWN - LAND SURVEYING

27 MAIN ST. JACKSON, CA 95642 - *209-223-1061

SHEET 1 OF 3.

SCALE: 1" = 20'

W.O. 1938.

H.T.