

# RECORD OF SURVEY NO. 34-18

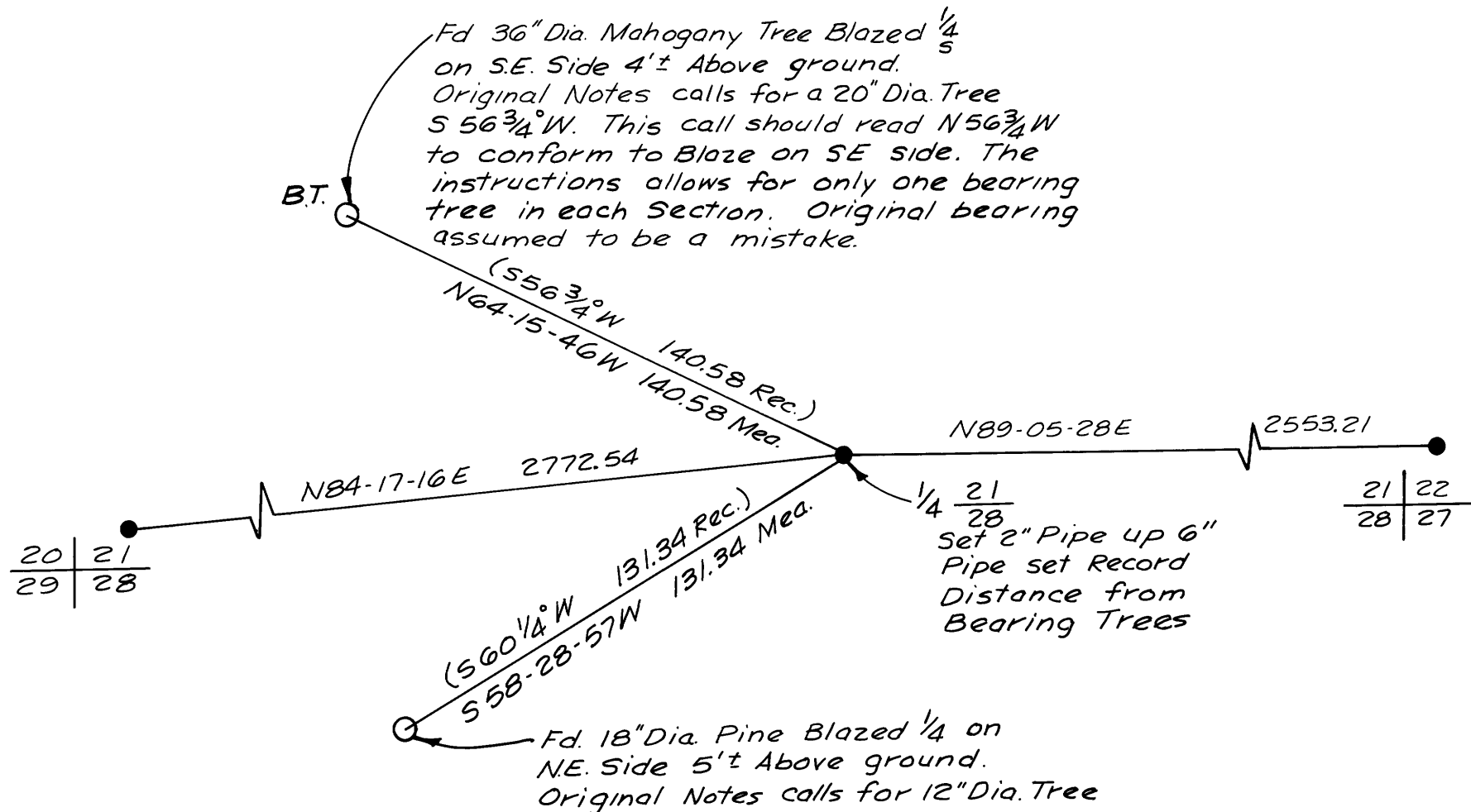
IN THE UNINCORPORATED  
TERRITORY OF THE COUNTY  
OF MONO, STATE OF CALIFORNIA

BEING A PORTION OF SECTIONS  
20, 21, 22, 30, AND 31, TOWNSHIP  
1 NORTH, RANGE 26 EAST, M.D.M.



## LEGEND

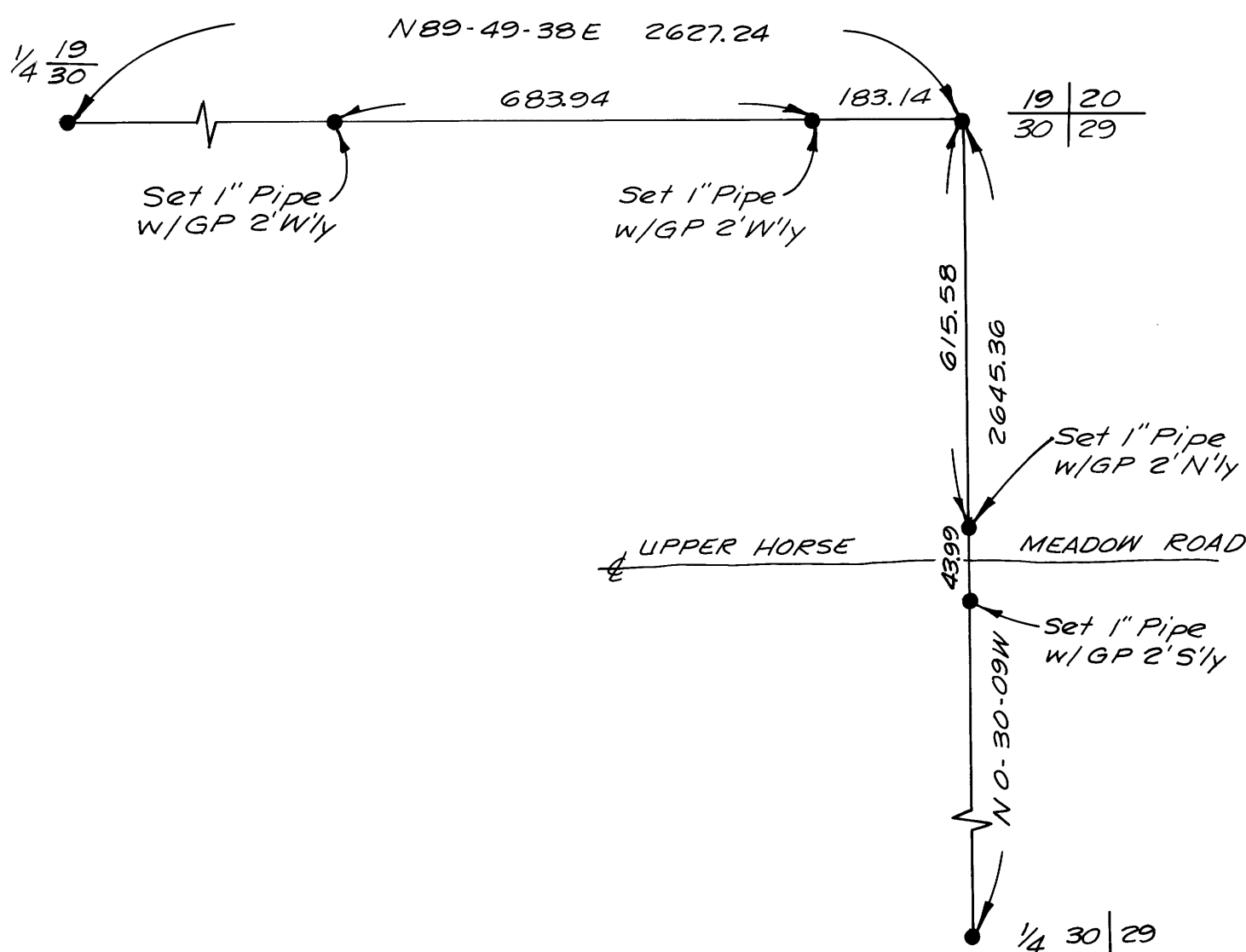
( ) Per original U.S.G.L.O. notes



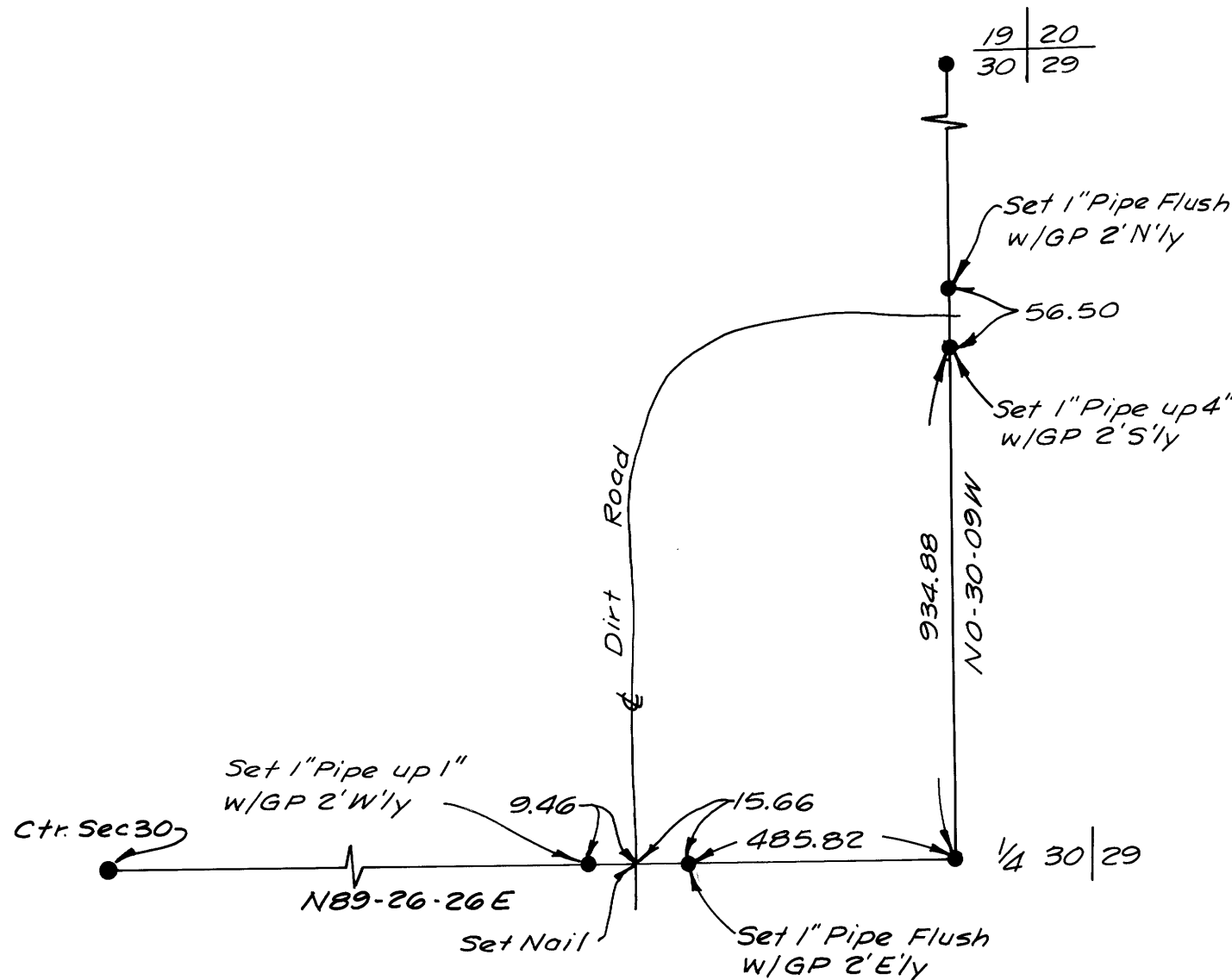
DETAIL 21-A

Note: All set 1" I.P.'s  
Tagged RCE 15557

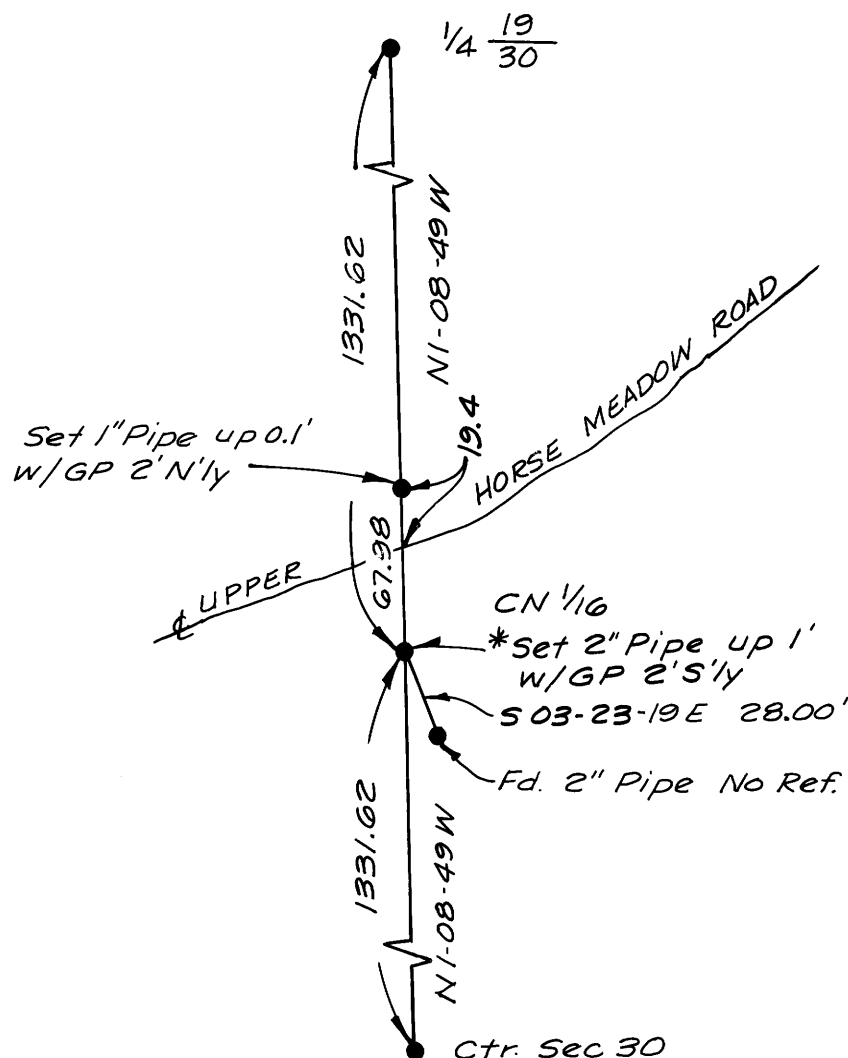
DETAIL 21-B



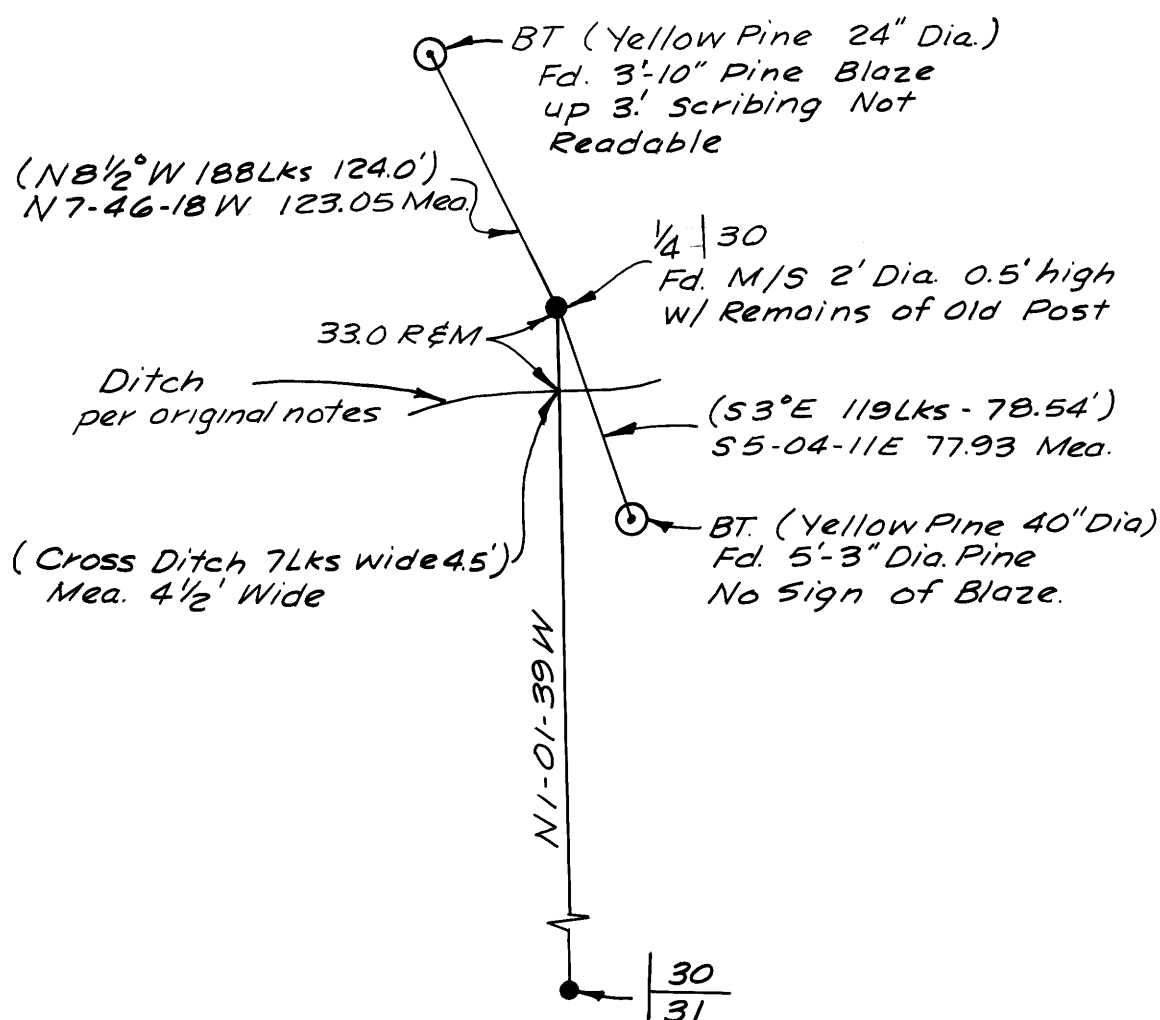
DETAIL 30-B



DETAIL 30-A



DETAIL 30-C



DETAIL 30-D

Vol. 1 of R/S Page 97F