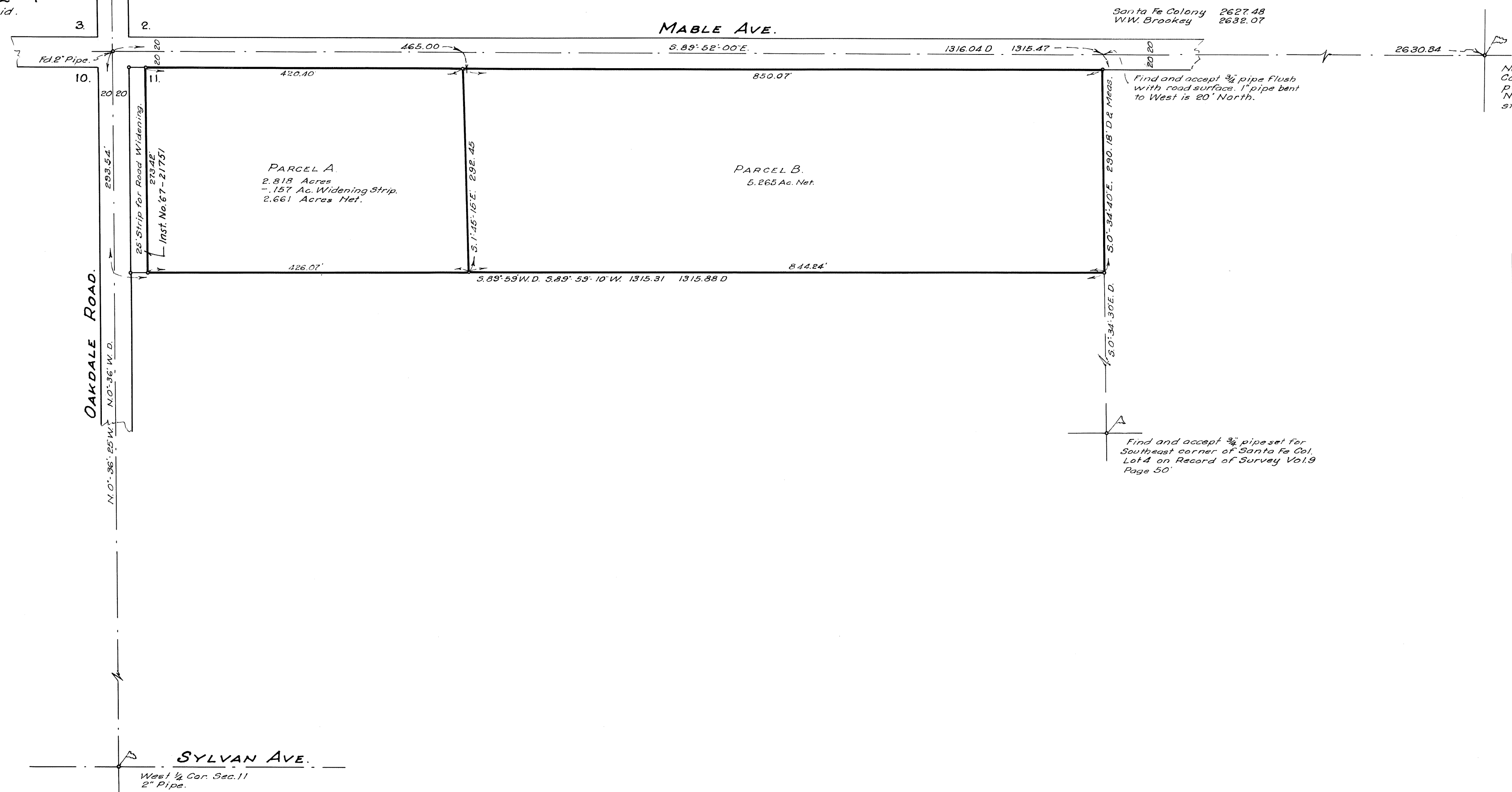


FILED FOR RECORD
This 17 day of July 1967
At 1:00 P.M.
PARCEL MAPS Vol. 3 Pg. 115
At request of Co. Surveyor
Steve Nelson
County Recorder.
By Robert L. Deane Deputy
Inst. 22212
Fee \$2.00 Paid.

3 P.M. 115



LEGEND:
• - 3/4" Pipe by W. W. Brookey RCE 4605. Found
• - 3/4" Set on this Survey Unless otherwise noted.
D - Deed O.R. 2101-675 to J.K. Allen Inst. 66-16422.
All undesignated data measured on this survey.

BASIS OF BEARINGS:
S. 89° 52' E. for North Line of Lot 3 and center
line of Mable Ave. according to map of
Santa Fe Colony-Maps Vol. 4 at Page 12.

This map has been examined this 13th day of JULY, 1967
for conformance with the requirements of Section 11575
of the Subdivision Map Act.

R.G. Barhite
County Surveyor
By Frank P. Kite Deputy

PARCEL MAP.

PORTION OF LOT 3 OF SANTA FE COLONY
NW 1/4 SEC. 11 T.3S, R.9E. M.D.B. & M.

SCALE: 1" = 100'

JUNE, 1967

This map was prepared by me and is based on a field survey in conformance with the requirements of the Subdivision Map Act at the request of MR. J.K. ALLEN, June 1967. I hereby certify that it conforms with the tentative map and the conditions of approval thereof; that all provisions of applicable state law and local ordinances have been complied with.

Oliver Deane
Reg. Civil Engineer No. 6693.

364.2376

3 P.M. 115