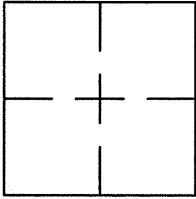


**CORNER RECORD**Document Number CR 8852City of EDEN TOWNSHIPCounty of ALAMEDA, CaliforniaBrief Legal Description BRASS DISC MONUMENT LOCATED WITHIN MANCHESTER RD.**CORNER RECORD**

Government Corner ☐ Control ☒  
 Meander ☐ Property ☐  
 Rancho ☐ Other ☐  
 Date of Survey 8/22/16

**COORDINATES**  
(Optional)

N. 2084072  
 E. 6095192  
 Zone \_\_\_\_\_ Datum \_\_\_\_\_  
 Elev. \_\_\_\_\_

**Corner** — Left as found ☒ Found and tagged ☐ Established ☐ Reestablished ☐ Rebuilt ☐

Identification and type of corner found: Evidence used to identify or procedure used to establish or reestablish the corner:  
FOUND BRASS DISC WITH NIPPLE IN MONUMENT WELL.

THIS POINT WAS REFERENCED PRIOR TO A CONSTRUCTION PROJECT IN THE VICINITY.

A description of the physical condition of the monument as found and as set or reset: \_\_\_\_\_  
FOUND AND SET POINTS AS SHOWN ON PAGE 2.

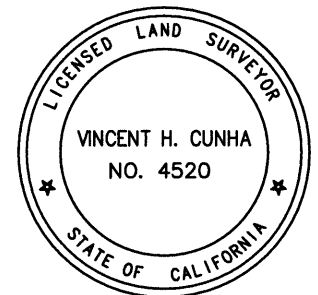
THE TIES SHOWN HEREON ARE FOR THE PURPOSE OF PERPETUATING FOUND MONUMENTATION.

NO CLAIM IS MADE AS TO THE RELATIONSHIP OF THE POINTS OR LINES SHOWN HEREON TO  
TRUE BOUNDARY LOCATIONS.

**SURVEYOR'S STATEMENT**

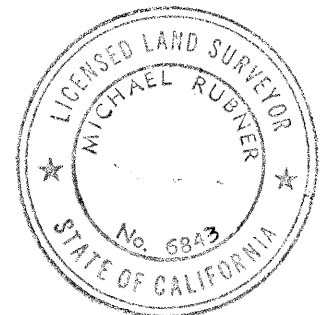
This Corner Record was prepared by me or under my direction in conformance with  
 the Land Surveyors' Act on AUGUST 23, 2016.

Signed Vincent H. Cunha L.S. Number LS 4520  
VINCENT H. CUNHA

**COUNTY SURVEYOR'S STATEMENT**

This Corner Record was received 31 AUGUST 2016 and examined  
 and filed 7 OCTOBER 2016.

Signed Michael Rubner Title COUNTY SURVEYOR



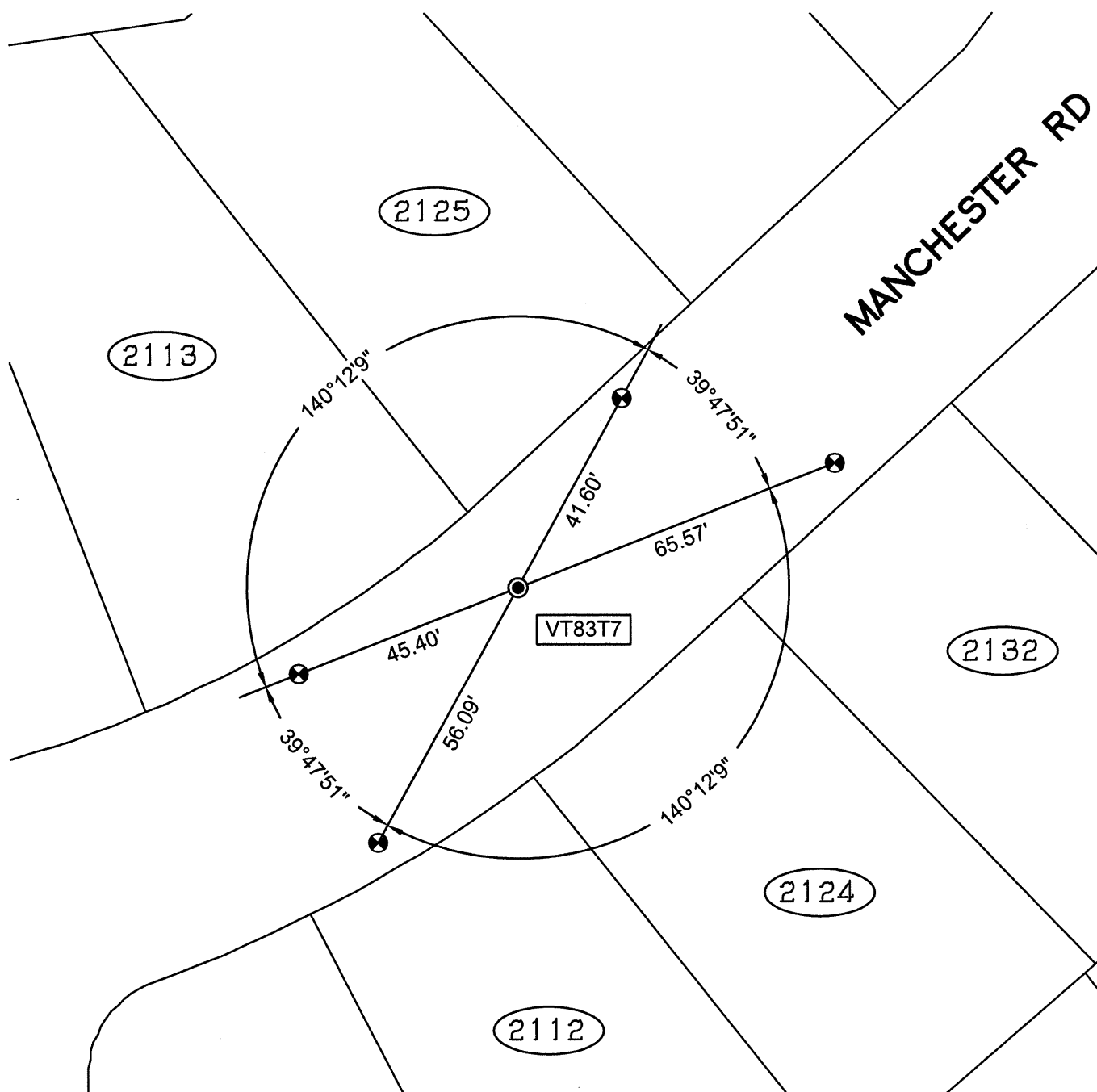
**County Surveyor's Comment** \_\_\_\_\_

SPEC-2303-PRE

SCALE: 1"=30'

## LEGEND

- FOUND BRASS DISC WITH NIPPLE IN MONUMENT WELL
- ⊗ SET CUT CROSS IN WALK
- ✕ SET CUT CROSS IN CURB
- ✕ SET MAG AND SHINER
- SET REBAR & CAP STAMPED "CEI RP"
- AA##A# ALAMEDA COUNTY MONUMENT ID
- 19592 REFERENCE STREET ADDRESS



216129-Manchester-CR08