

SEASONS IV UNIT NO. 2

IN THE UNINCORPORATED TERRITORY OF MONO COUNTY, CALIF.

FOR CONDOMINIUM PURPOSES

NOTES

LOT 51 IS THE LAND AND REAL PROPERTY INCLUDED WITHIN THE BLUE BORDER OF THIS SUBDIVISION, EXCEPT THEREFROM THOSE PORTIONS INCLUDED WITHIN LOTS 1 THRU 50 INCLUSIVE, SHOWN HEREON WHICH ARE SUBDIVISIONS OF AIRSPACE.

ON ALL LOTS (EXCEPT LOT 51) SOLID LINES INDICATE THE INTERIOR FACE OF THE WALLS. THE BOUNDARIES OF THE LOTS SHOWN HEREON (OTHER THAN LOT 51) ARE MEASURED TO THE INTERIOR SURFACES OF THE VERTICAL, HORIZONTAL AND INCLINED PLANES AT THE LIMITS OF THE DIMENSIONS OR ELEVATIONS SHOWN. (THE ELEVATIONS OF WHICH ARE SHOWN ON SHEET 1) THE SURVEY TIES SHOWN ARE TO THE VERTICAL PROJECTION OF THE OUTSIDE FACE OF EXISTING STUD WALLS AND ARE AT RIGHT ANGLES TO THE STREETS OR BOUNDARY LINES UNLESS OTHERWISE NOTED. ALL LOT LINES INTERSECT AT RIGHT ANGLES UNLESS OTHERWISE NOTED.

BENCH MARK

U.S.G.S. BENCH MARK, STANDARD DISC IN BOTTOM STEP MAMMOTH POST OFFICE MARKED: 17 U.D. 1952 *7860 ELEV. 7859.561

LEGEND

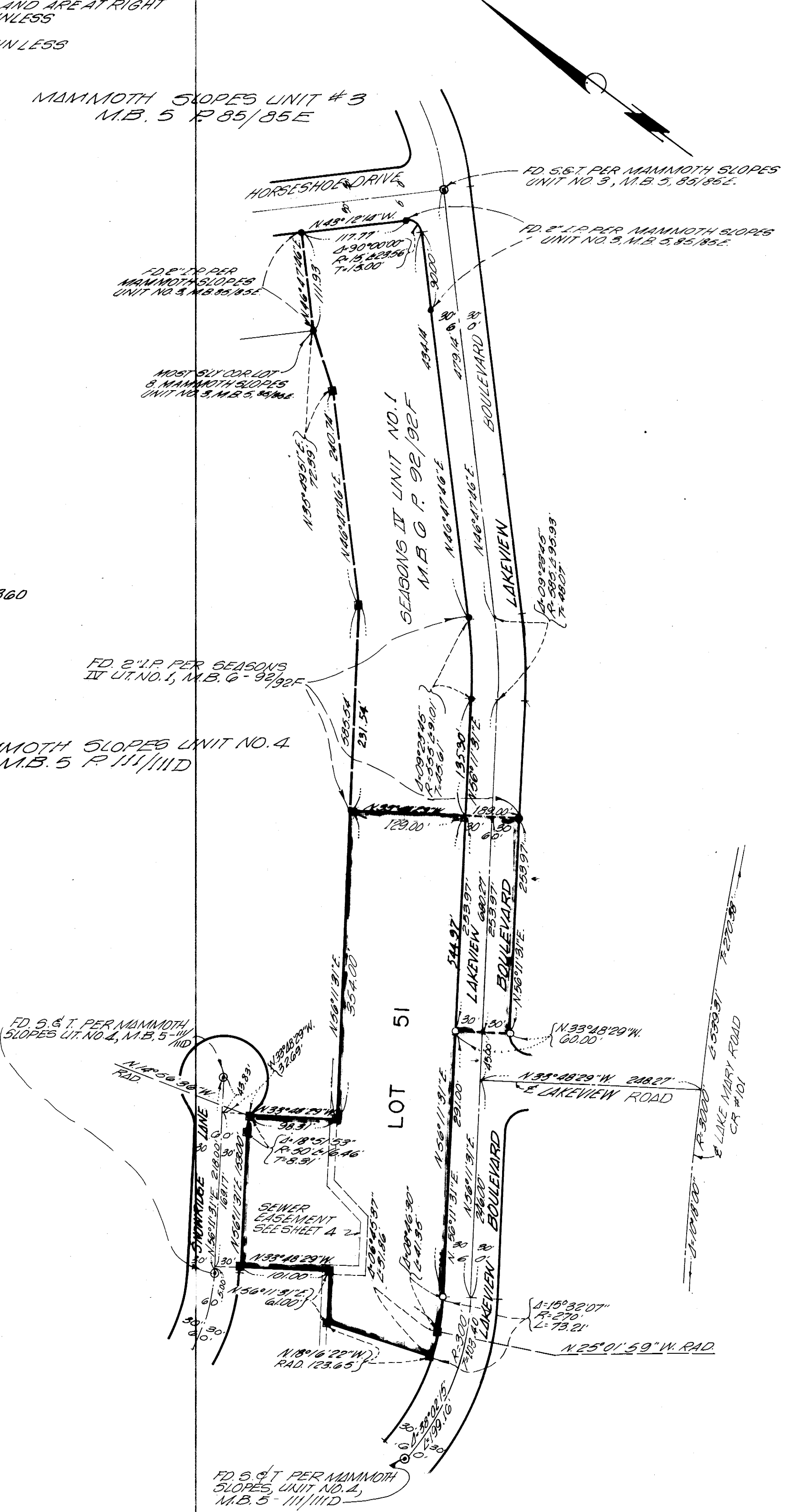
- FD 2" I.P. AS INDICATED
- FD 5' 6" T. AS INDICATED
- SET 2" I.P. & TAGGED R.C.E. 15360
- FD 2" I.P. PER MAMMOTH SLOPES UNIT NO. 4, M.B. 5, III, IIIA, IIID

MAMMOTH SLOPES UNIT #3
M.B. 5 P. 85/85E

MAMMOTH SLOPES UNIT NO. 4
M.B. 5 P. III/IIID

FD 5' 6" T. PER MAMMOTH SLOPES UNIT NO. 4, M.B. 5, III, IIID

FD 5' 6" T. PER MAMMOTH SLOPES UNIT NO. 4, M.B. 5, III/IIID



Vol. 7 Page 18-A