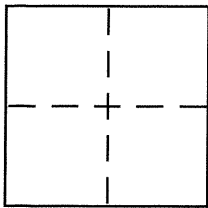


CORNER RECORD

BK 39 Pg 24

Document Number CR4394
County of ALAMEDA, California

City of BERKELEY
Brief Legal Description CITY OF BERKELEY MONUMENT B0482



CORNER TYPE

Government Corner ☐ Control ☒
Meander ☐ Property ☐
Rancho ☐ Other ☐
Date of Survey 12-14-2010

COORDINATES (Optional)

N. _____
E. _____
Zone _____ NAD27 ☐ NAD83 ☐
NAD83 Epoch _____
Elev. _____
Vert. Datum: NGVD29 ☐ NAVD88 ☐
Meas. Units: Metric ☐ Imperial ☐

Corner - Left as found ☐ Found and tagged ☐ Established ☐ Reestablished ☒ Rebuilt ☐

Identification and type of corner found: Evidence used to identify or procedure used to establish or reestablish the corner:
IN COMPLIANCE WITH SECTION 8771 OF THE PROFESSIONAL LAND
SURVEYOR'S ACT, THIS CORNER RECORD IS BEING FILED TO REESTABLISH
THE POSITION OF AN EXISTING MONUMENT AFTER SEWER
RECONSTRUCTION.

A description of the physical condition of the monument as found and as set or reset:
CITY OF BERKELEY WELL-TYPE MONUMENT WITH BRASS CAP
AND PUNCH MARK.

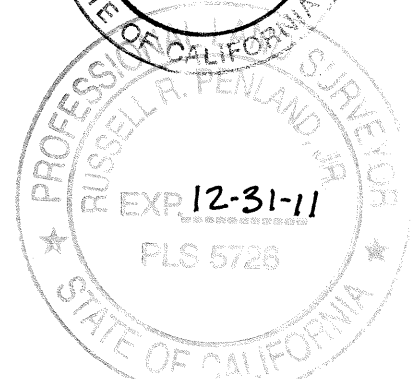
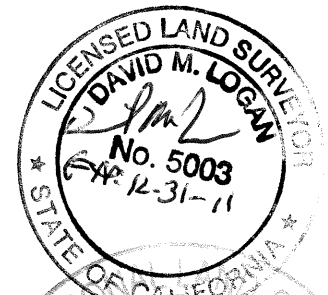
SURVEYOR'S STATEMENT

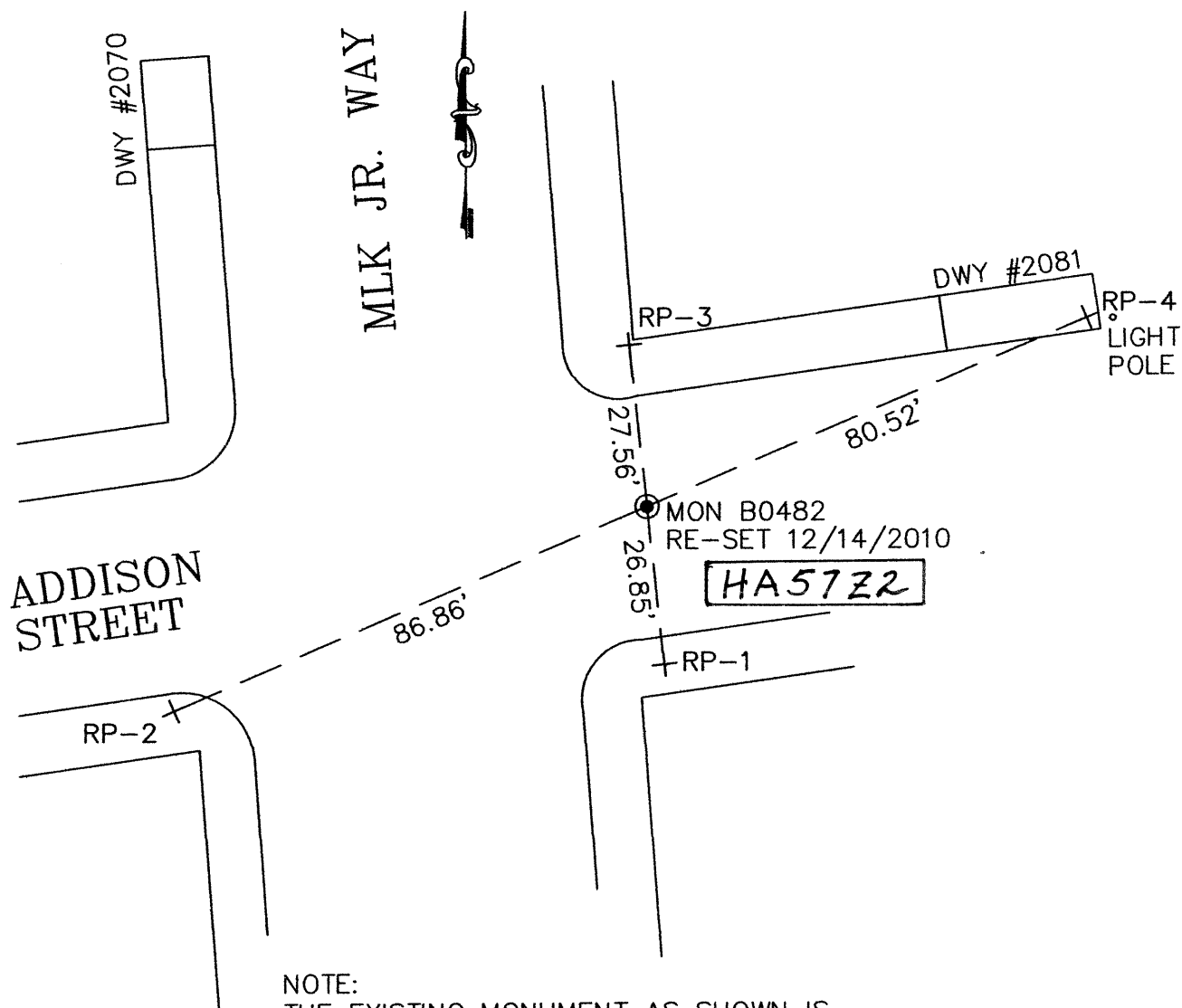
This Corner Record was prepared by me or under my direction in conformance with
the Land Surveyor's Act on DECEMBER 15 2010
Signed [Signature] P.L.S or R.C.E. No. PLS 5003

COUNTY SURVEYOR'S STATEMENT

This Corner Record was received 12-16-10
and examined and filed 1-24-11
Signed [Signature] P.L.S or R.C.E. No. 5726
Title COUNTY SURVEYOR

County Surveyor's Comment _____





NOTE:
THE EXISTING MONUMENT AS SHOWN IS
REFERENCED BY STRAIGHT LINES BETWEEN RP-1
TO RP-3 AND RP-2 TO RP-4.

LEGEND

- STANDARD WELL-TYPE CITY
MONUMENT, RE-SET WITH BRASS
CAP AND PUNCH MARK ON
DECEMBER 14, 2010.

+ REFERENCE CROSS ON SIDEWALK

HA57Z2 ALAMEDA COUNTY MONUMENT I.D.