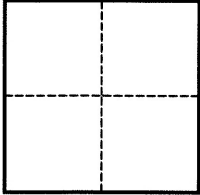


# CORNER RECORD

Agency Index BOOK 113 PAGE 24Document Number CR 11741City of BERKELEY County of ALAMEDA, CaliforniaBrief Legal Description CITY OF BERKELEY MONUMENT VG83K2**CORNER TYPE**

- ☐ Government Corner ☒ Control  
☐ Meander ☐ Property  
☐ Rancho ☐ Other

Date of Survey MAY 13TH, 2018**COORDINATES (OPTIONAL)**

N. \_\_\_\_\_ E. \_\_\_\_\_

Elevation \_\_\_\_\_

Units ☐ Metric ☐ U.S. Survey Foot

Horizontal Datum \_\_\_\_\_

Zone \_\_\_\_\_ Epoch Date \_\_\_\_\_

Vertical Datum ASSUMED☐ Complies with Public Resources Code §§8801-8819☐ Complies with Public Resources Code §§8890-8902PLS Act Ref.: ☐ 8765(d) ☒ 8771 ☐ 8773 ☐ Other:Corner/ ☒ Left as found ☐ Established ☐ Rebuilt ☒ Pre-ConstructionMonument: ☐ Found and tagged ☐ Reestablished ☒ Referenced ☐ Post-Construction

Narrative of corner identified and monument as found, set, reset, replaced, or removed:

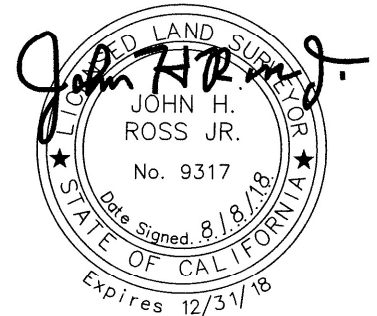
☒ See sheet #2 for description(s):

FOUND MONUMENT THAT COULD BE DAMAGED OR DESTROYED BY A PROPOSED GAS LINE  
CONSTRUCTION PROJECT. MONUMENT WAS REFERENCED AS SHOWN ON PAGE 2 OF 2.

THE PURPOSE OF THIS CORNER RECORD IS TO PRESERVE THE LOCATION OF THE MONUMENT  
PRIOR TO CONSTRUCTION. NO ATTEMPT WAS MADE TO DETERMINE THE RELATIONSHIP BETWEEN  
THE MONUMENT AND PROPERTY LINES, RIGHT-OF-WAY LINES, CENTERLINES OR OTHER  
MONUMENTS.

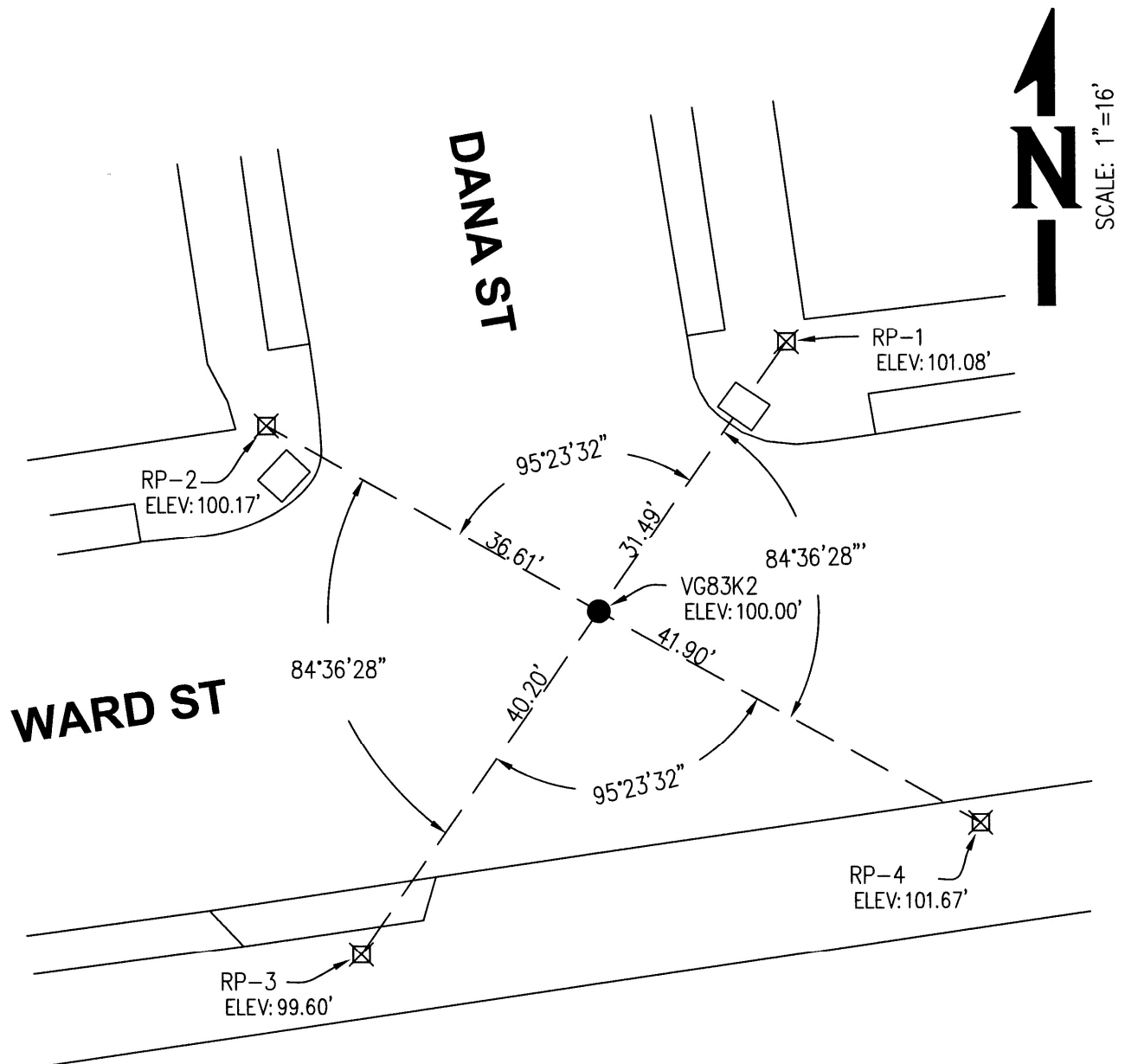
**SURVEYOR'S STATEMENT**

This Corner Record was prepared by me or under my direction in conformance with

the Professional Land Surveyors' Act on AUGUST 8TH, 2018Signed John H. Ross Jr. P.L.S. or R.C.E. No. 9317**COUNTY SURVEYOR'S STATEMENT**This Corner Record was received 16 JULY 2018and examined and filed 11 SEPTEMBER 2018Signed Michael Rubner P.L.S. or R.C.E. No. 6843Title COUNTY SURVEYOR

County Surveyor's Comment



**LEGEND**

- FOUND 2" BRASS CAP STAMPED LS 5003 IN MONUMENT WELL PER ROS 2300 BK 34 PG 76
  - ⊗ SET CUT "X" IN SIDEWALK FOR PERPETUATION THRU CONSTRUCTION.
- VG83K2: ALAMEDA COUNTY MONUMENT IDENTIFICATION NUMBER.