

airdave's

Kool Wheelz

COLLECTION

SILHOUETTE

ONE OF THE 1968
"ORIGINAL SIXTEEN"

A MODEL INSPIRED BY
MATTEL™



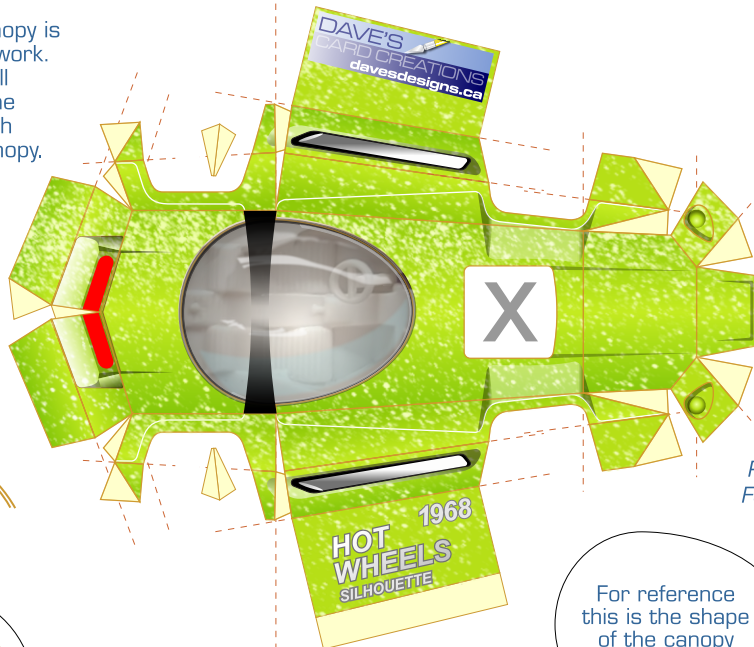
THIS ARTWORK IS NOT ENDORSED BY OR AFFILIATED IN ANY MANNER WITH MATTEL INC. OR HOT WHEELS DIECAST TOYS.

PRINT ON HIGHEST QUALITY SETTINGS FOR THE BEST RESULTS
FIND AN ASSEMBLY INSTRUCTIONS SHEET AT WWW.PAPERMODELFORUM.COM



The clear Bubble Canopy is simulated in the artwork.

Shape and install the Canopy Frame as a smooth arch over an invisible canopy.



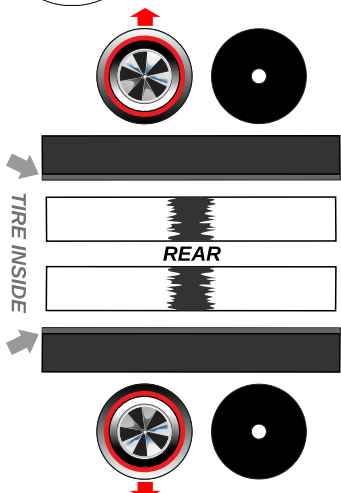
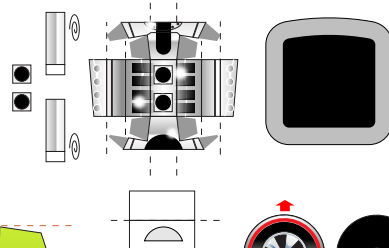
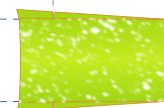
NOT ALL FOLD LINES ARE INDICATED.
STUDY THE PART BEFORE CUTTING
AND PRE-SCORE ALL THE FOLD LINES
INCLUDING THE GLUE TABS!

REFER TO THE ASSEMBLY DIAGRAM SHEET*
FOR A MORE COMPLETE SCORING TEMPLATE.



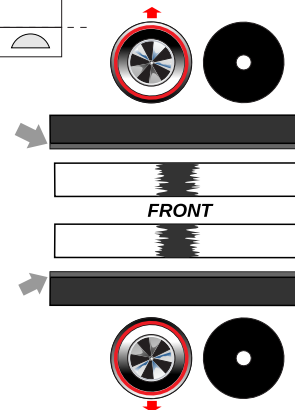
If you want to install a clear bubble top you can use this interior part.
You must cut out the opening and mount the interior from inside the body.

For reference this is the shape of the canopy bubble



REAR

The Wheels are designed to be glued in place (to the chassis) but you can also install 2mm toothpick axles.



FRONT

ANOTHER TRIBUTE TO MATTEL HOT WHEELS TOYS.

"HOT WHEELS ARE THE COOLEST METAL CARS ON THE PLANET!"

NOT FOR SALE OR RESALE - DO NOT COPY - DO NOT SHARE OR REDISTRIBUTE WITHOUT PERMISSION
THIS IS FAN-ART, INTENDED SOLELY FOR PRIVATE AND PERSONAL USE

DAVE'S
CARD CREATIONS
davesdesigns.ca

©2018 Dave Winfield original model