

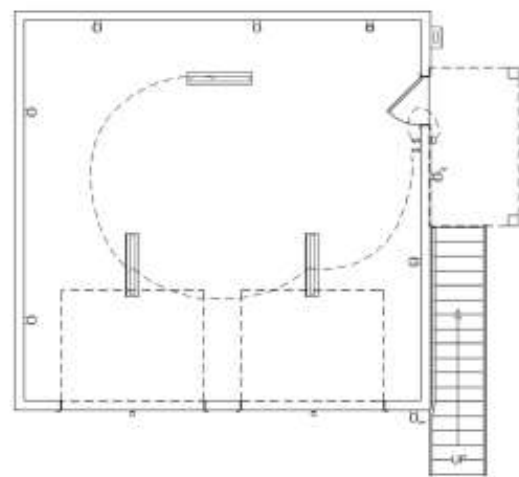
- 9'-0"x7'-0" Garage Door
- 3'-0"x6'-8" Hinged Door
- 3'-0"x6'-8" Hinged Door
- 2'-8"x6'-8" Hinged Door
- 2'-0"x6'-8" Hinged Door
- 1'-6"x6'-8" Hinged Door
- 2'-8"x4'-8" Double Hung Window
- 2'-4"x4'-0" Single Casement HR Window
- 3'-0"x5'-4" Single Hung Window
- 2'-8"x3'-6" Double Hung Window

- 2.0
- 1.0
- 1.0
- 2.0
- 1.0
- 1.0
- 2.0
- 2.0
- 2.0
- 1.0

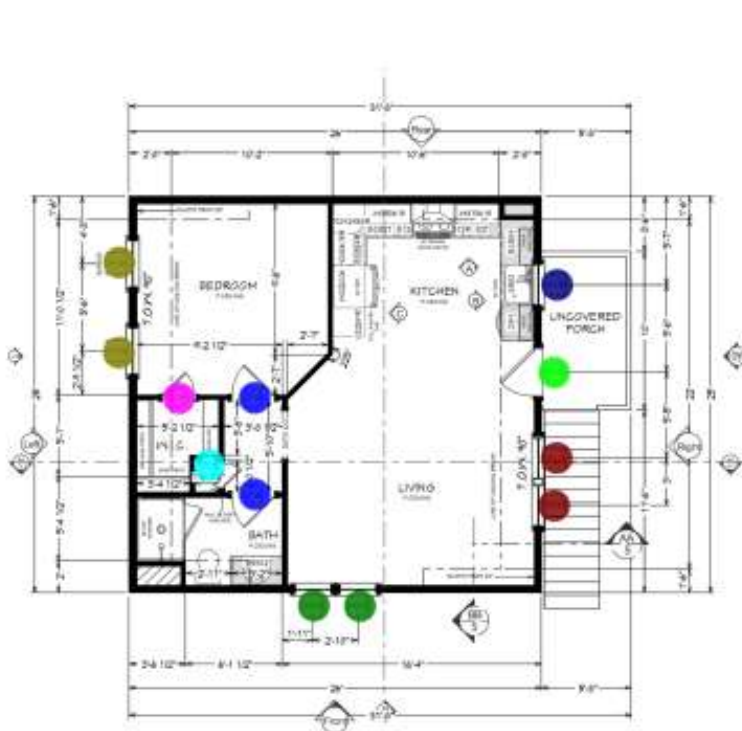
FLOOR PLAN VERSION 3

ELECTRICAL LEGEND	
SYMBOL	DESCRIPTION
	Ceiling Fan Light Fixture, Classic Ceiling Fan
	Ventilation Fan, Exhaust
	Ceiling Mounted Light Fixture, Surface/Pendant/Flush Mounted, 6" Recessed Can, 4" Recessed Can
	Wall Mounted Light Fixture, Vanity Light, Wall Sconce, Mirror, Mirror Sconce
	Chandelier Light Fixture
	Surface Mounted Receptacle
	120V Receptacle, Duplex, Weather Proof GFCI, Quadplex
	Switches, Single Pole, 3-Way, Single Pole Dimmer, Occupancy Sensor
	Water BB

ELECTRIC UPPER LEVEL Scale 1/4"=1'



ELECTRIC GROUND LEVEL Scale 1/4"=1'

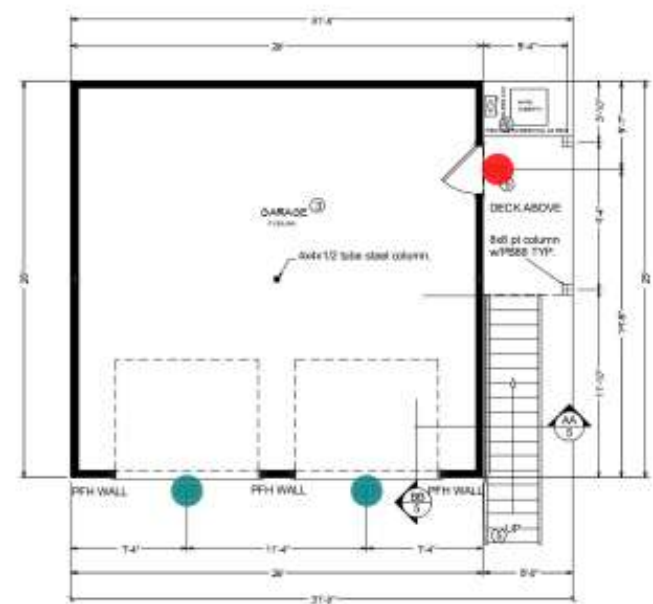


FLOOR PLAN UPPER LEVEL Scale 1/4"=1'

LEGEND:	
	= exterior doors per IBC
	= 2x4 @ 16" O.C. exterior wall
	= 2x4 @ 16" O.C. interior wall
	= 2x4 @ 16" O.C. interior wall
	= full wall minimum space= 4"
	= foundation wall
	= int. foundation

DOOR SCHEDULE					
NO.	TYPE	FINISH	DOOR	DOOR	LOCATION
001	DOOR	600	60	DOOR	DOOR CHAM
002	DOOR	600	60	DOOR	DOOR CHAM
003	DOOR	600	60	DOOR	DOOR CHAM
004	DOOR	600	60	DOOR	DOOR CHAM
005	DOOR	600	60	DOOR	DOOR CHAM
006	DOOR	600	60	DOOR	DOOR CHAM
007	DOOR	600	60	DOOR	DOOR CHAM
008	DOOR	600	60	DOOR	DOOR CHAM

WINDOW SCHEDULE					
NO.	TYPE	FINISH	WINDOW	WINDOW	LOCATION
001	WINDOW	600	60	WINDOW	DOOR CHAM
002	WINDOW	600	60	WINDOW	DOOR CHAM
003	WINDOW	600	60	WINDOW	DOOR CHAM
004	WINDOW	600	60	WINDOW	DOOR CHAM
005	WINDOW	600	60	WINDOW	DOOR CHAM
006	WINDOW	600	60	WINDOW	DOOR CHAM
007	WINDOW	600	60	WINDOW	DOOR CHAM
008	WINDOW	600	60	WINDOW	DOOR CHAM



FLOOR PLAN GROUND LEVEL Scale 1/4"=1'

DATE

DESCRIPTION

NO.

VERSION 3 - FLOOR PLAN

ELECTRIC PLAN

PROJECT NAME

DETACHED GARAGE/ADD CONSTRUCTION SET

PROJECT NO.

311 North Burbank Drive Hoover, AL 36206

DESIGNER

CHRISTY WATMAN

DATE

3/28/2023

SCALE

1/4"=1'-0"

SHEET

A-3

Material Breakdown						
LINE ITEM #	PRODUCT DESCRIPTION	PRODUCT APPLICATION	QUANTI TY	WASTAGE	QUANTITY W/	UNI
EXTERIOR MATERIAL						
85	Fiber Cement Siding	Exterior Siding	1620	10%	1782.0	Sft
86	Composite Shingles	Exterior Siding	15	10%	16.5	Sft
87	TYVEK House Wrap	House Wrap	0	10%	0.0	Sft
88	Door Flashing	Flashing	80	10%	88.0	Lft
89	Bottom Flashing	Flashing	107	10%	117.7	Lft
90	Window Flashing	Flashing	100	10%	110.0	Lft
91	Wall through Flashing	Flashing	34	10%	37.4	Lft
92	Door Trim	Trim	80	10%	88.0	Lft
93	Window Trim	Trim	100	10%	110.0	Lft
94	(10" Thick) Wooden WT	Trim	82	10%	90.2	Lft
95	(6" Thick) Frieze Board	Frieze Board	196	10%	215.6	Lft
96	(4" Thick) PT Wooden Corner Boards	Corner Board	243	10%	267.3	Lft
97	Fascia	Fascia	41	10%	45.1	Lft
98	1x8 Fascia	Fascia	196	10%	215.6	Lft
99	2x6 Fascia	Fascia	196	10%	215.6	Lft
100	1'-6" W Soffit	Soffit	196	10%	215.6	Lft
101	16"x16" Wooden Brackets	Decorative Brackets	3	10%	3.3	Ea
102	20"x32" Wooden Brackets	Decorative Brackets	3	10%	3.3	Ea
103	1/2"x8'x4' Plywood CDX Sheathing	Exterior Wall Sheathing	52	10%	57.2	Ea
DOOR MATERIAL						
104	9'/0"x7'/0" Garage Door W/ Frame	Ground Level Exterior Door	2	10%	2.2	Ea
105	3'/0"x6'/8" Hinged Door W/ Frame	Ground Level Exterior Door	1	10%	1.1	Ea
106	3'/0"x6'/8" Hinged Door W/ Frame	Upper Level Exterior Door	1	10%	1.1	Ea
107	1'/6"x6'/8" Hinged Door W/ Frame	Upper Level Interior Door	1	10%	1.1	Ea
108	2'/0"x6'/8" Hinged Door W/ Frame	Upper Level Interior Door	1	10%	1.1	Ea
109	2'/8"x6'/8" Hinged Door W/ Frame	Upper Level Interior Door	2	10%	2.2	Ea
WINDOWS MATERIAL						
110	2'/4"x4'/0" Single Casement HR Window W/ Frame	Upper Level	2	10%	2.2	Ea
111	2'/8"x3'/6" Double Hung Window W/ Frame	Upper Level	1	10%	1.1	Ea
112	2'/8"x4'/8" Double Hung Window W/ Frame	Upper Level	2	10%	2.2	Ea
113	3'/0"x5'/4" Single Hung Window W/ Frame	Upper Level	2	10%	2.2	Ea

DOOR MATERIALS

6'-0"x7'-0" Full Glass Door w/ Frame	Exterior Door	1	Ea
3'-0"x7'-0" Full Glass Door w/ Frame	Exterior Door	1	Ea
3'-0"x7'-0" Wood Door w/ Frame	Interior Door	5	Ea
2'-6"x7'-0" Wood Door w/ Frame	Interior Door	3	Ea
2'-6"x7'-0" Wood BI-Fold Door w/ Frame	Interior Door	2	Ea
2'-6"x7'-0" Wood Door w/ Frame	Interior Door	2	Ea

WINDOWS MATERIALS

72"x60" Double-Hung Window	Windows	4	Ea
36"x42" Single-Hung Window	Windows	1	Ea
36"x60" Single-Hung Window	Windows	4	Ea

DOOR SCHEDULE

NO.	SIZE	QTY	DESCRIPTION
1	3'-0" x 7'-0"	1	EXT. FULL GLASS
2	PR. 2'-0" x 7'-0"	1	EXT. FULL GLASS
3	3'-0" x 7'-0"	3	INT. WOOD
4	3'-0" x 7'-0"	2	CASSED SPOKING
5	2'-6" x 7'-0"	3	INT. WOOD
6	PR. 2'-0" x 7'-0"	2	INT. WOOD BI-FOLD
7	2'-6" x 7'-0"	2	INT. WOOD POCKET

WINDOW SCHEDULE

NOTE: ALL WINDOW HEADERS ARE AT 7'-0" ABOVE F.F.C. UNLESS NOTED

NO.	ROOM WINDOW SIZE	QTY	DESCRIPTION
1	72" x 60"	4	DOUBLE, DOUBLE-HUNG
2	36" x 42"	1	SINGLE, DOUBLE-HUNG
3	36" x 60"	4	SINGLE, DOUBLE-HUNG

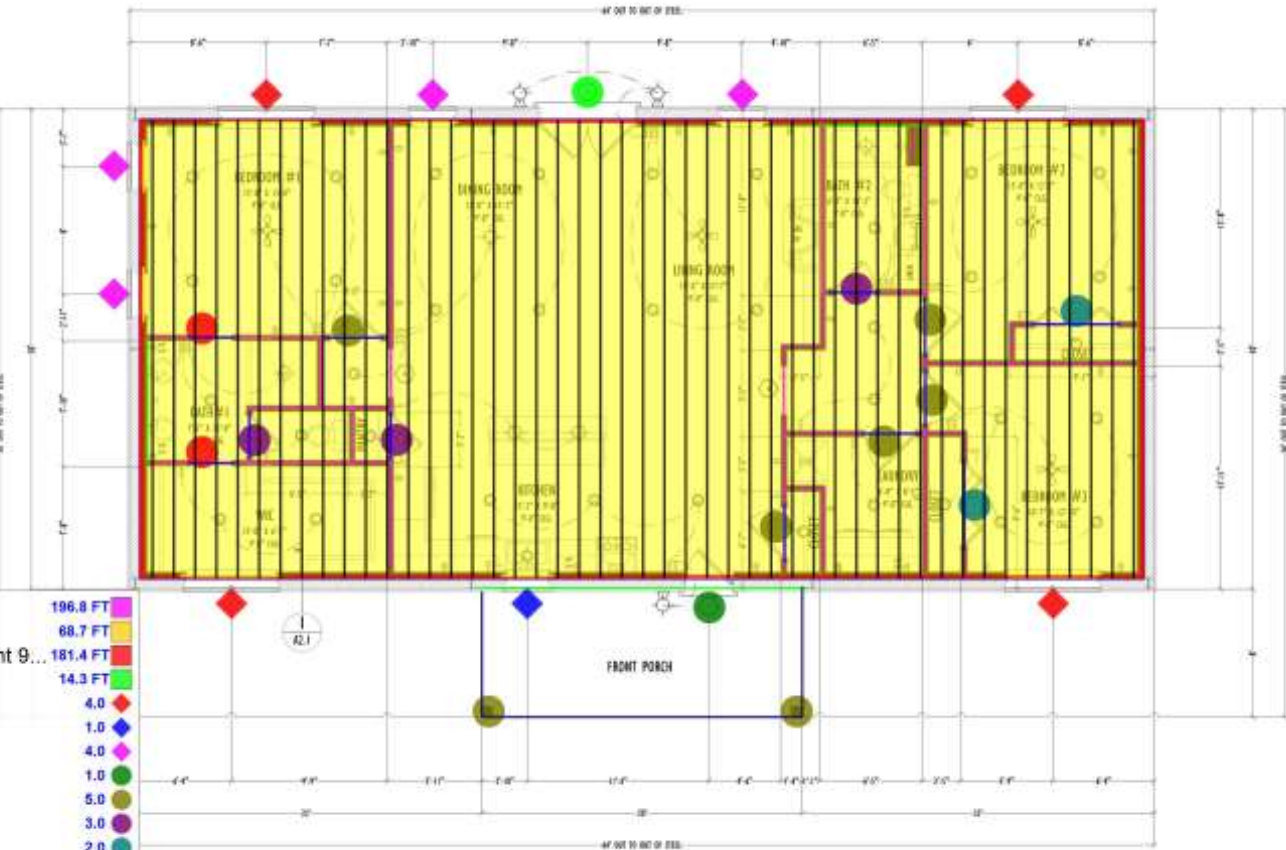
ELECTRICAL NOTES

1. THESE DRAWINGS ARE INTENDED TO REPRESENT DESIGN AND LIGHTING INTENT ONLY. COMPLIANCE WITH CODE REQUIREMENTS ARE CONTRACTOR'S RESPONSIBILITY.
2. SMOKE DETECTORS TO BE HIGH RUN OFF LIGHTING CIRCUIT & INTER-CONNECTED. DETECTORS TO BE WITHIN 15' OF EACH BEDROOM WITH BATTERY BACKUP.
3. FIELD VERIFY FINAL LOCATION OF OUTLETS, OUTLETS WITH USE PORTS & FEATURES W/SHOWER PRIOR TO ROUGH-IN.
4. ELECTRICIAN TO COMPLY WITH ALL APPLICABLE CODES, ELECTRICIAN TO DESIGN AND INSTALL ALL SUPPLY, PANEL AND DISTRIBUTION SYSTEMS.

ELECTRICAL FIXTURE LEGEND

⊕	110V WALL PLUG
⊕	220V WALL PLUG
⊕ (G)	110V OUTLET GROUND FAULT
⊕ (W)	WATERPROOF GROUND FAULT 110V OUTLET
S	SWITCH
⊕ (S)	SWITCH-OUTLET LIGHT

- (2x4) Interior Wall (Ceiling Height 9'-0")
- MRB
- (2x4) Exterior Wall (Exterior Height 11'-0") (Interior Ceiling Height 9'-0")
- MRB
- 72"x60" Double-Hung Window
- 36"x42" Single-Hung Window
- 36"x60" Single-Hung Window
- 3'-0"x7'-0" Full Glass Door w/ Frame
- 3'-0"x7'-0" Wood Door w/ Frame
- 2'-6"x7'-0" Wood Door w/ Frame
- 2'-6"x7'-0" Wood BI-Fold Door w/ Frame
- 2'-6"x7'-0" Wood Door w/ Frame
- 3'-0"x7'-0" Full Glass Door w/ Frame
- 2x Window Header
- 2x Door Header
- 2x Ceiling Joist
- Standard Joist
- 2x Rim-Joist
- 2x4 Gable Exterior Wall (5'-3" H)
- 2x4 Gable Exterior Wall (2'-9" H)
- 8x8x9' Cypress Post
- LVL Beam



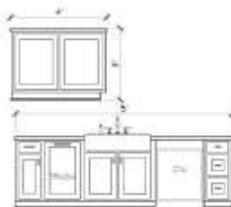
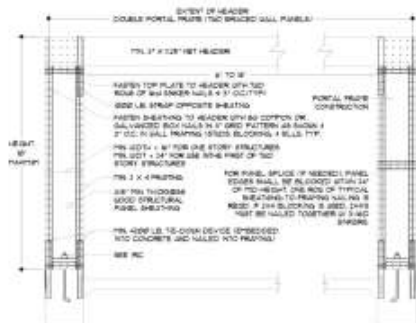
FLOOR PLAN

SCALE: 1/4" = 1'-0"

196.8 FT	68.7 FT	181.4 FT	14.3 FT	4.0	1.0	4.0	1.0	5.0	3.0	2.0	2.0	1.0	48.0 FT	50.0 FT	1,803.7 SQ FT	1,390.8 FT	183.0 FT	57.4 FT	20.9 FT	2.0	36.0 FT
----------	---------	----------	---------	-----	-----	-----	-----	-----	-----	-----	-----	-----	---------	---------	---------------	------------	----------	---------	---------	-----	---------

MAIN FLOOR PLAN

Project ID: Bald Cypress
Issue Date: 1/30/2023
Drawn By: WR/SE/KR

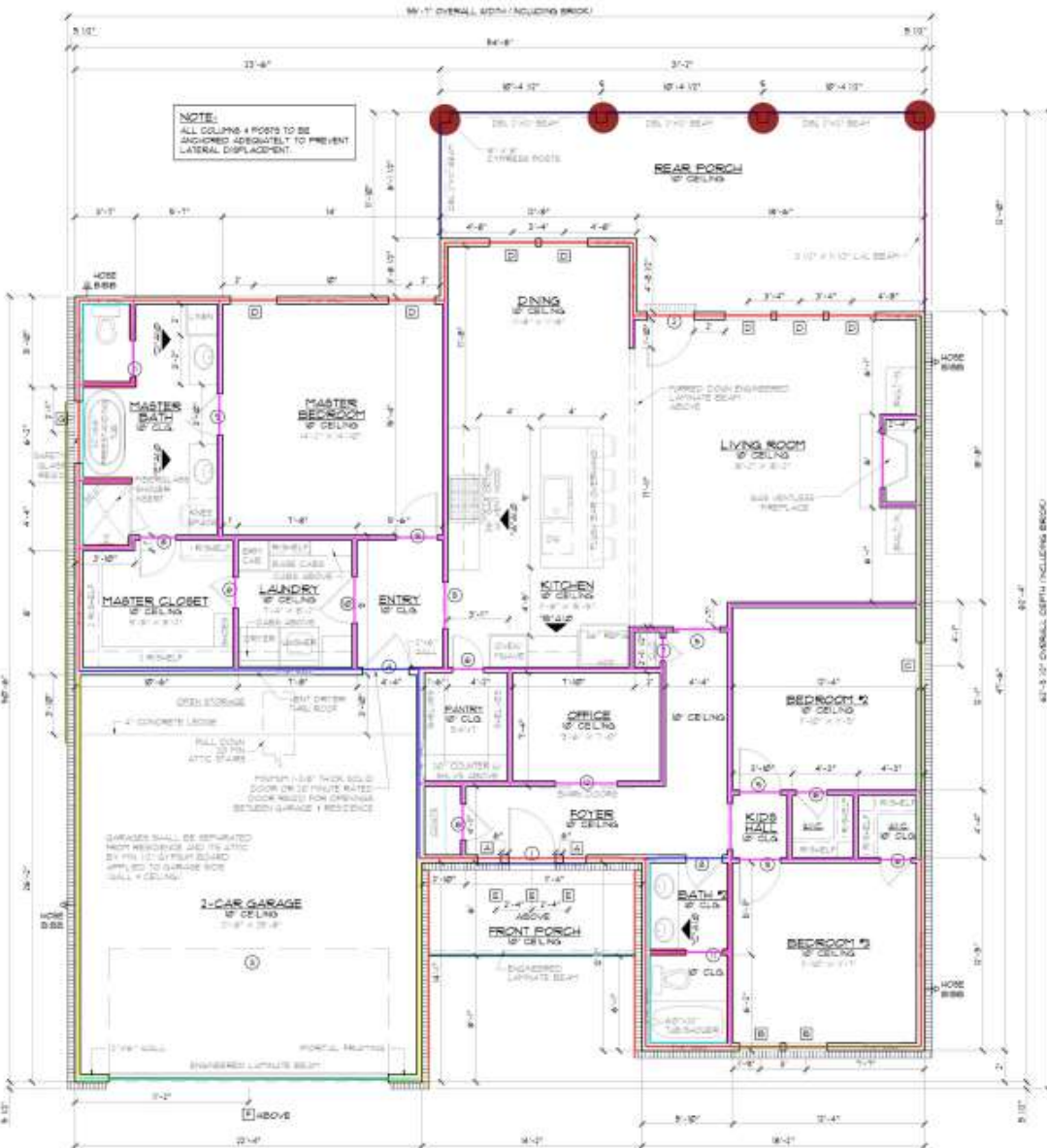


ISLAND ELEV. SCALE: 3/8" = 1'-0"

- 3/0x8/0 Exterior 4 Lite 3/4 French Solid Wood Door 1.0
- 3/0x8/0 Exterior 4 Lite Full French Solid Wood Door 1.0
- 18/0x8/0 Exterior Overhead Metal Garage Door W/ Opener 1.0
- 3/0x8/0 Exterior 6 Panel Metal Door 1.0
- 2/0x8/0 Interior Horizontal 6 Panel H.C Masonite Door (4EA) 1.0
- 1/6x8/0 Interior Horizontal 6 Panel H.C Masonite Door 1.0
- 2/4x8/0 Interior Horizontal 6 Panel H.C Masonite Door (3 EA) 1.0
- 2/8x8/0 Interior Horizontal 6 Panel H.C Masonite Door (4EA) 1.0
- 3/0x8/0 Interior Horizontal 6 Panel H.C Masonite Door 1.0
- 2/4x8/0 Interior H.C Masonite 6 panel Pocket Door (2 EA) 1.0
- DBL 2/0x8/0 Interior Wood Sliding Barn Door 1.0
- 1/6x5/0 3 Lite Vinyl Fixed DBL Insulated Window (2EA) 1.0
- 2/8x6/0 2/2 Lite Vinyl Single Hung DBL Insulated Window (2EA) 1.0
- 3/0x6/0 2/2 Lite Vinyl Single Hung DBL Insulated Window 1.0
- 3/0x7/0 2/2 Lite Vinyl Single Hung DBL Insulated Window (7EA) 1.0
- 2/0x2/0 4 Lite Vinyl Fixed DBL Insulated Window (3EA) 1.0
- 2/0x4/0 4 Lite Vinyl Fixed DBL Insulated Window (2EA) 1.0
- 4/0x4/0 4 Lite Vinyl Fixed DBL Insulated Window 1.0
- Brick Veneer (4' H) 24.2 FT
- (8"x8") Cypress Post (9'-0" H) 4.0
- (2x6) 10' H 177.8 FT
- (2x6) 10' H Portal wall 4.0 FT
- (2x4) 10' H 40.4 FT
- (2x6) 10' H 39.3 FT
- (2x4) 10' H 246.6 FT
- MRB 34.1 FT
- MRB 36.1 FT
- (2x6) Gable Wall (10'-6" H) 52.9 FT
- (2x6) Gable Wall (7' H) 34.3 FT
- (2x6) Gable Wall (4' H) 7.0 FT
- 5/4"x6"x Continuous Hardie Plank Board Fascia 26.2 FT
- Preformed Metal Flashing W/ Sealant 26.2 FT
- 2x12 Beam 35.9 FT
- 3 1/2"x11 1/2" LVL Beam 12.2 FT
- Engineered Laminated Beam 31.3 FT

MARK	SIZE	DESCRIPTION	QTY.
1	3'0" x 8'0"	EXTERIOR 4 LITE 3/4 FRENCH SOLID WOOD DOOR	1
2	3'0" x 8'0"	EXTERIOR 4 LITE FULL FRENCH SOLID WOOD DOOR	1
3	18'0" x 8'0"	EXT. OVERHEAD METAL GARAGE DOOR W/ OPENER + LITES	1
4	3'0" x 8'0"	EXTERIOR 6 PANEL METAL DOOR	1
5	3'0" x 8'0"	CLOSED OPENING	3
6	2'0" x 8'0"	INTERIOR HORIZONTAL 6 PANEL H.C MASONITE DOOR	4
7	1'6" x 8'0"	INTERIOR HORIZONTAL 6 PANEL H.C MASONITE DOOR	1
8	2'4" x 8'0"	INTERIOR HORIZONTAL 6 PANEL H.C MASONITE DOOR	3
9	2'8" x 8'0"	INTERIOR HORIZONTAL 6 PANEL H.C MASONITE DOOR	4
10	3'0" x 8'0"	INTERIOR HORIZONTAL 6 PANEL H.C MASONITE DOOR	1
11	2'4" x 8'0"	INTERIOR H.C MASONITE 6 PANEL POCKET DOOR	2
12	DBL 2'0" x 8'0"	INTERIOR WOOD SLIDING BARN DOOR - OWNER SELECT	1 PAIR

MARK	OPENING SIZE	DESCRIPTION	QTY.
1	1'6" x 8'0"	3 LITE VINYL FIXED DBL INSULATED WINDOW	3
2	2'8" x 6'0"	2/2 LITE VINYL SINGLE HUNG DBL INSULATED WINDOW	2
3	3'0" x 6'0"	2/2 LITE VINYL SINGLE HUNG DBL INSULATED WINDOW	1
4	3'0" x 7'0"	2/2 LITE VINYL SINGLE HUNG DBL INSULATED WINDOW	7
5	2'0" x 2'0"	4 LITE VINYL FIXED DBL INSULATED WINDOW (SEE SHEET A2.0)	3
6	2'0" x 4'0"	4 LITE VINYL FIXED DBL INSULATED WINDOW (SEE SHEET A2.0)	2
7	4'0" x 4'0"	4 LITE VINYL FIXED DBL INSULATED W/ SAFETY GLASS WINDOW	1



FLOOR PLAN SCALE: 1/4" = 1'-0"

5'-0" BRICK WATER TABLE AROUND FRONT + REAR ONLY

CONTRACTOR TO LOCATE WATER HEATER + A/C UNITS ON SITE

*SQUARE FOOTAGE

LIVING ROOM	173
REAR PORCH	40
KITCHEN	140
BATH	50
TOTAL SQ. FT.	353
TOTAL SQ. FT. INCLUDING BRICK WATER TABLE	358

IMPORTANT NOTE:
ALL GARAGES OR STORAGE AREAS FROM SLEEPING ROOMS MUST HAVE A MINIMUM NET CLEAR OPENING OF 8' SQUARE FEET. GRAVEL FLOOR UNLESS NOTED OTHERWISE. THE MINIMUM NET CLEAR OPENING HEIGHT SHALL BE 30". THE MINIMUM NET CLEAR OPENING WIDTH SHALL BE 30". MINIMUM RILL HEIGHT - 1" MIN. APP.

RESIDENCE OF
JOEL BARRERA

MADDEN HOME DESIGN
8375 Rushing Road
Danham Springs, Louisiana
77028
Phone: (225) 791-2912

Project No: RIVER BEND
DATE: MARCH 22, 2023
DRAWN BY: Steven Madden
DESIGNED BY: Steven Madden

COPYRIGHT NOTE:
These Plans Are Subject To Federal Copyright Laws And Are To Be Used For The Lot Number And Subdivision Indicated In This Title Block. Only one (1) set of these plans is permitted.

© COPYRIGHT 2023

Sheet 1/1

FLOOR PLAN

□ Preliminary Exp.
□ Bidding Exp.
□ Construction Exp.

Sheet
A1.0

ESTIMATE STATEMENT

Project Title: Fort Myers Residential

Location: 2999 NE 191St Street, Aventura, FL 33180

Project Type:

Project Scope: EVERYTHING

Date: 6/14/2023

SR#	CSI SECTION	MATERIAL DESCRIPTION	QUANTITY	WASTAGE	QTY. W/ WASTAGE	UNIT OF MEASUREMENT
	DIV.08	OPENING				
		Door				
106		(5'-8"x7'-0") Double Leaf Wood Door w/ Wood Frame Door Type: A(L) Door Finish: Paint Frame Finish: Paint	104	0%	104	EA
107		(6'-0"x7'-9") Glazing Door w/ Aluminum Frame Door Type: FF Door Finish: Pref Frame Finish: Pref	2	0%	2	EA
108		(7'-0"x8'-9") Glazing Door w/ Aluminum Frame Door Type: FF Door Finish: Pref Frame Finish: Pref	1	0%	1	EA
109		(6'-0"x8'-9") Glazing Door w/ Aluminum Frame Door Type: FF Door Finish: Pref Frame Finish: Pref	2	0%	2	EA
		(6'-2"x10'-8") Glazing Door w/ Aluminum Frame Door Type: FF				

ESTIMATE STATEMENT

Project Title:	Fort Myers Residential				
Location:	2999 NE 191St Street, Aventura, FL 33180				
Project Type:					
Project Scope:	EVERYTHING				
Date:	6/14/2023				

SR#	CSI SECTION	MATERIAL DESCRIPTION	QUANTITY	WASTAGE	QTY. W/ WASTAGE	UNIT OF MEASUREMENT
110		(6'-2"x10'-8") Glazing Door w/ Aluminum Frame Door Type: FF Door Finish: Pref Frame Finish: Pref	1	0%	1	EA
111		(3'-0"x7'-9") Glazing Door w/ Aluminum Frame Door Type: FF Door Finish: Pref Frame Finish: Pref	2	0%	2	EA
112		(3'-0"x7'-0") Single Leaf Wood Door w/ Hollow Metal Frame Door Type: A Door Finish: Paint Frame Finish: Paint	1	0%	1	EA
113		(3'-0"x7'-0") 45 Min. Fire Rated Single Leaf Wood Door w/ Hollow Metal Frame Door Type: A Door Finish: Paint Frame Finish: Paint	5	0%	5	EA
114		(3'-0"x7'-0") 90 Min. Fire Rated Single Leaf Wood Door w/ Hollow Metal Frame Door Type: A Door Finish: Paint	5	0%	5	EA

ESTIMATE STATEMENT

Project Title:	Fort Myers Residential	
Location:	2999 NE 191St Street, Aventura, FL 33180	
Project Type:		
Project Scope:	EVERYTHING	
Date:	6/14/2023	

SR#	CSI SECTION	MATERIAL DESCRIPTION	QUANTITY	WASTAGE	QTY. W/ WASTAGE	UNIT OF MEASUREMENT
115		(3'-0"x7'-0") 45 Min. Fire Rated Single Leaf Wood Door w/ Hollow Metal Frame Door Type: AA Door Finish: Paint Frame Finish: Paint	1	0%	1	EA
116		(3'-0"x7'-0") 90 Min. Fire Rated Single Leaf Wood Door w/ Hollow Metal Frame Door Type: AA Door Finish: Paint Frame Finish: Paint	14	0%	14	EA
117		(3'-0"x7'-0") 20 Min. Fire Rated Single Leaf Hollow Metal Door w/ Hollow Metal Frame Door Type: A Door Finish: Paint Frame Finish: Paint	2	0%	2	EA
118		(3'-0"x7'-0") 45 Min. Fire Rated Single Leaf Hollow Metal Door w/ Hollow Metal Frame Door Type: A Door Finish: Paint Frame Finish: Paint	16	0%	16	EA
		(3'-0"x7'-0") 90 Min. Fire Rated Single Leaf Hollow Metal Door w/ Hollow				

ESTIMATE STATEMENT

Project Title: Fort Myers Residential**Location:** 2999 NE 191St Street, Aventura, FL 33180**Project Type:****Project Scope:** EVERYTHING**Date:** 6/14/2023

SR#	CSI SECTION	MATERIAL DESCRIPTION	QUANTITY	WASTAGE	QTY. W/ WASTAGE	UNIT OF MEASUREMENT
119		(3'-0"x7'-0") 90 Min. Fire Rated Single Leaf Hollow Metal Door w/ Hollow Metal Frame Door Type: A Door Finish: Paint Frame Finish: Paint	26	0%	26	EA
120		(3'-0"x7'-0") 45 Min. Fire Rated Single Leaf Hollow Metal Door w/ Hollow Metal Frame Door Type: AA Door Finish: Paint Frame Finish: Paint	6	0%	6	EA
121		(3'-0"x7'-0") 90 Min. Fire Rated Single Leaf Hollow Metal Door w/ Hollow Metal Frame Door Type: AA Door Finish: Paint Frame Finish: Paint	3	0%	3	EA
122		(5'-0"x7'-0") 45 Min. Fire Rated Double Leaf Hollow Metal Door w/ Hollow Metal Frame Door Type: AA Door Finish: Paint Frame Finish: Paint	11	0%	11	EA

ESTIMATE STATEMENT

Project Title:	Fort Myers Residential				
Location:	2999 NE 191St Street, Aventura, FL 33180				
Project Type:					
Project Scope:	EVERYTHING				
Date:	6/14/2023				

SR#	CSI SECTION	MATERIAL DESCRIPTION	QUANTITY	WASTAGE	QTY. W/ WASTAGE	UNIT OF MEASUREMENT
127		(2'-10"x7'-0") Single Leaf Wood Door w/ Wood Frame Door Type: A Door Finish: Paint Frame Finish: Paint	1343	0%	1343	EA
128		(2'-10"x7'-0") Single Leaf Wood Door w/ Wood Frame Door Type: B Door Finish: Paint Frame Finish: Paint	127	0%	127	EA
129		(3'-0"x7'-0") Single Leaf Wood Door w/ Wood Frame Door Type: A Door Finish: Paint Frame Finish: Paint	10	0%	10	EA
130		(4'-0"x7'-0") Double Leaf Wood Door w/ Wood Frame Door Type: BB Door Finish: Paint Frame Finish: Paint	146	0%	146	EA
131		(5'-8"x7'-0") Double Leaf Wood Door w/ Wood Frame Door Type: A(L) Door Finish: Paint Frame Finish: Paint	104	0%	104	EA
		(6'-0"x7'-0") Double Leaf Wood Door w/ Wood Frame				

ESTIMATE STATEMENT

Project Title:	Fort Myers Residential				
Location:	2999 NE 191St Street, Aventura, FL 33180				
Project Type:					
Project Scope:	EVERYTHING				
Date:	6/14/2023				

SR#	CSI SECTION	MATERIAL DESCRIPTION	QUANTITY	WASTAGE	QTY. W/ WASTAGE	UNIT OF MEASUREMENT
		Storefront				
136		SF01 (25'-2-1/4"x21'-5") Storefront w/Frame & (6'-0"x8'-9")(2) Double Leaf Door w/Frame	2	0%	2	EA
137		SF02 (9'-7-1/2"x10'-8") Storefront w/Frame & (3'-0"x7'-9") Single Leaf Door w/Frame	1	0%	1	EA
138		SF03 (9'-7-1/2"x10'-8") Storefront w/Frame & (3'-0"x7'-9") Single Leaf Door w/Frame	1	0%	1	EA
139		SF04 (25'-2-1/4"x21'-5") Storefront w/Frame & (7'-4"x8'-9") Double Leaf Door w/Frame	1	0%	1	EA
140		SF05 (8'-0"x21'-4") Storefront w/Frame	4	0%	4	EA
141		SF06 (5'-4"x21'-4") Storefront w/Frame	6	0%	6	EA
142		SF10 (10'-0"x10'-1-3/4") Storefront w/Frame	4	0%	4	EA
143		SF17 (27'-5"x10'-8") Storefront w/Frame	1	0%	1	EA

ESTIMATE STATEMENT

Project Title:	Fort Myers Residential				
Location:	2999 NE 191St Street, Aventura, FL 33180				
Project Type:					
Project Scope:	EVERYTHING				
Date:	6/14/2023				

SR#	CSI SECTION	MATERIAL DESCRIPTION	QUANTITY	WASTAGE	QTY. W/ WASTAGE	UNIT OF MEASUREMENT
		Window				
146		W01 (5'-4"x5'-6") Glass Window w/Frame	86	0%	86	EA
147		W02 (5'-4"x5'-6") Glass Window w/Frame with Shutter	116	0%	116	EA
148		W03 (6'-4"x6'-6") Glass Window w/Frame	316	0%	316	EA
149		W04 (3'-4"x5'-6") Fixed Glass Window w/Frame	6	0%	6	EA
150		W05 (3'-4"x5'-6") Fixed Glass Window w/Frame	23	0%	23	EA
151		W06 (8'-4"x8'-0") Glass Window w/Frame	91	0%	91	EA
152		W07 (8'-4"x8'-0") Glass Window w/Frame	20	0%	20	EA
153		W08 (3'-0"x3'-0") Window w/Frame	6	0%	6	EA
154		W09 (5'-4"x5'-6") Glass Window w/Frame with Shutter	10	0%	10	EA

[illegible]



Copyright ©
SAGE Publications and Sage Co. 1999

DESIGNER INFORMATION

[illegible]

BUILDER INFORMATION

QALYs	NETO PAID (\$10,000)
Control group	
Study group	
Study group	
Study group	

DRAWN FOR

BUTTE POLE
BUILDING

1999, 2000, 2001, 2002, 2003, 2004, 2005, 2006, 2007, 2008, 2009, 2010, 2011, 2012, 2013, 2014, 2015, 2016, 2017, 2018, 2019, 2020, 2021, 2022, 2023, 2024, 2025, 2026, 2027, 2028, 2029, 2030, 2031, 2032, 2033, 2034, 2035, 2036, 2037, 2038, 2039, 2040, 2041, 2042, 2043, 2044, 2045, 2046, 2047, 2048, 2049, 2050, 2051, 2052, 2053, 2054, 2055, 2056, 2057, 2058, 2059, 2060, 2061, 2062, 2063, 2064, 2065, 2066, 2067, 2068, 2069, 2070, 2071, 2072, 2073, 2074, 2075, 2076, 2077, 2078, 2079, 2080, 2081, 2082, 2083, 2084, 2085, 2086, 2087, 2088, 2089, 2090, 2091, 2092, 2093, 2094, 2095, 2096, 2097, 2098, 2099, 2100, 2101, 2102, 2103, 2104, 2105, 2106, 2107, 2108, 2109, 2110, 2111, 2112, 2113, 2114, 2115, 2116, 2117, 2118, 2119, 2120, 2121, 2122, 2123, 2124, 2125, 2126, 2127, 2128, 2129, 2130, 2131, 2132, 2133, 2134, 2135, 2136, 2137, 2138, 2139, 2140, 2141, 2142, 2143, 2144, 2145, 2146, 2147, 2148, 2149, 2150, 2151, 2152, 2153, 2154, 2155, 2156, 2157, 2158, 2159, 2160, 2161, 2162, 2163, 2164, 2165, 2166, 2167, 2168, 2169, 2170, 2171, 2172, 2173, 2174, 2175, 2176, 2177, 2178, 2179, 2180, 2181, 2182, 2183, 2184, 2185, 2186, 2187, 2188, 2189, 2190, 2191, 2192, 2193, 2194, 2195, 2196, 2197, 2198, 2199, 2200, 2201, 2202, 2203, 2204, 2205, 2206, 2207, 2208, 2209, 2210, 2211, 2212, 2213, 2214, 2215, 2216, 2217, 2218, 2219, 2220, 2221, 2222, 2223, 2224, 2225, 2226, 2227, 2228, 2229, 2230, 2231, 2232, 2233, 2234, 2235, 2236, 2237, 2238, 2239, 2240, 2241, 2242, 2243, 2244, 2245, 2246, 2247, 2248, 2249, 2250, 2251, 2252, 2253, 2254, 2255, 2256, 2257, 2258, 2259, 2260, 2261, 2262, 2263, 2264, 2265, 2266, 2267, 2268, 2269, 2270, 2271, 2272, 2273, 2274, 2275, 2276, 2277, 2278, 2279, 2280, 2281, 2282, 2283, 2284, 2285, 2286, 2287, 2288, 2289, 2290, 2291, 2292, 2293, 2294, 2295, 2296, 2297, 2298, 2299, 2300, 2301, 2302, 2303, 2304, 2305, 2306, 2307, 2308, 2309, 2310, 2311, 2312, 2313, 2314, 2315, 2316, 2317, 2318, 2319, 2320, 2321, 2322, 2323, 2324, 2325, 2326, 2327, 2328, 2329, 2330, 2331, 2332, 2333, 2334, 2335, 2336, 2337, 2338, 2339, 2340, 2341, 2342, 2343, 2344, 2345, 2346, 2347, 2348, 2349, 2350, 2351, 2352, 2353, 2354, 2355, 2356, 2357, 2358, 2359, 2360, 2361, 2362, 2363, 2364, 2365, 2366, 2367, 2368, 2369, 2370, 2371, 2372, 2373, 2374, 2375, 2376, 2377, 2378, 2379, 2380, 2381, 2382, 2383, 2384, 2385, 2386, 2387, 2388, 2389, 2390, 2391, 2392, 2393, 2394, 2395, 2396, 2397, 2398, 2399, 2400, 2401, 2402, 2403, 2404, 2405, 2406, 2407, 2408, 2409, 2410, 2411, 2412, 2413, 2414, 2415, 2416, 2417, 2418, 2419, 2420, 2421, 2422, 2423, 2424, 2425, 2426, 2427, 2428, 2429, 2430, 2431, 2432, 2433, 2434, 2435, 2436, 2437, 2438, 2439, 2440, 2441, 2442, 2443, 2444, 2445, 2446, 2447, 2448, 2449, 2450, 2451, 2452, 2453, 2454, 2455, 2456, 2457, 2458, 2459, 2460, 2461, 2462, 2463, 2464, 2465, 2466, 2467, 2468, 2469, 2470, 2471, 2472, 2473, 2474, 2475, 2476, 2477, 2478, 2479, 2480, 2481, 2482, 2483, 2484, 2485, 2486, 2487, 2488, 2489, 2490, 2491, 2492, 2493, 2494, 2495, 2496, 2497, 2498, 2499, 2500, 2501, 2502, 2503, 2504, 2505, 2506, 2507, 2508, 2509, 2510, 2511, 2512, 2513, 2514, 2515, 2516, 2517, 2518, 2519, 2520, 2521, 2522, 2523, 2524, 2525, 2526, 2527, 2528, 2529, 2530, 2531, 2532, 2533, 2534, 2535, 2536, 2537, 2538, 2539, 2540, 2541, 2542, 2543, 2544, 2545, 2546, 2547, 2548, 2549, 2550, 2551, 2552, 2553, 2554, 2555, 2556, 2557, 2558, 2559, 2560, 2561, 2562, 2563, 2564, 2565, 2566, 2567, 2568, 2569, 2570, 2571, 2572, 2573, 2574, 2575, 2576, 2577, 2578, 2579, 2580, 2581, 2582, 2583, 2584, 2585, 2586, 2587, 2588, 2589, 2590, 2591, 2592, 2593, 2594, 2595, 2596, 2597, 2598, 2599, 2600, 2601, 2602, 2603, 2604, 2605, 2606, 2607, 2608, 2609, 2610, 2611, 2612, 2613, 2614, 2615, 2616, 2617, 2618, 2619, 2620, 2621, 2622, 2623, 2624, 2625, 2626, 2627, 2628, 2629, 2630, 2631, 2632, 2633, 2634, 2635, 2636, 2637, 2638, 2639, 2640, 2641, 2642, 2643, 2644, 2645, 2646, 2647, 2648, 2649, 2650, 2651, 2652, 2653, 2654, 2655, 2656, 2657, 2658, 2659, 2660, 2661, 2662, 2663, 2664, 2665, 2666, 2667, 2668, 2669, 2670, 2671, 2672, 2673, 2674, 2675, 2676, 2677, 2678, 2679, 2680, 26

CLIENT INFORMATION

項目	金額
1. 材料費	100,000
2. 労務費	50,000
3. 経費	10,000
4. 利益	40,000
合計	200,000

PROJECT INFORMATION

AGS #	22-XEX
Process #	0071
Order ref #	
Doc ref #	ADMIN

Life Span

DESIGN CRITERIA

PLAN AREAS

SQ. FT. TOTALS	
LIVING AREAS	

[illegible]

2ND FLOOR -	2647 Sq Ft
TOTAL LIVING -	4147 Sq Ft
NON-LIVING AREAS	

PAPERBACK COVERED • 100% U.S. PA

TOTALS

© 1999 Blackwell Science Ltd, *Journal of Internal Medicine* 245: 399–406

FIREARM(S) SALES		
NO	FB	TITLE
2000	<input checked="" type="checkbox"/>	1000000000
2001	<input checked="" type="checkbox"/>	1000000000
2002	<input checked="" type="checkbox"/>	1000000000

NAME	DATE	PERIOD
NO.		
REMARKS		

[illegible]

Date Printed: 11/23/2022

SHEET INFORMATION

SHEET TITLE:

Door E Window

Door & Window Schedules

Schedules

DATE: _____

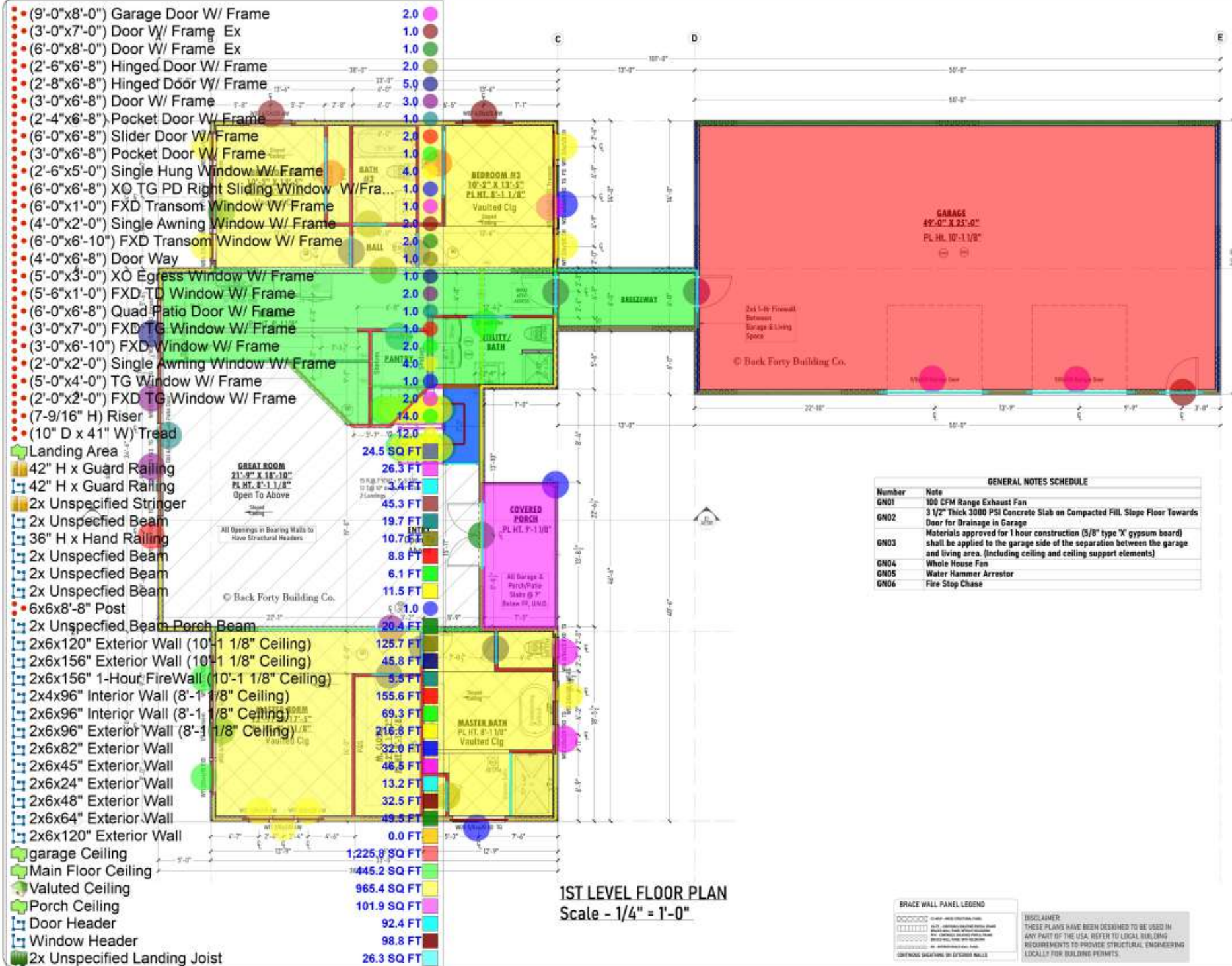
AF203

ALL200

PAGE 4

DISCLAIMER:
THESE PLANS HAVE BEEN DESIGNED TO BE USED IN
ANY PART OF THE USA. REFER TO LOCAL BUILDING
REQUIREMENTS TO PROVIDE STRUCTURAL ENGINEERING
LOCALLY FOR BUILDING PERMITS.

- (9'-0"x8'-0") Garage Door W/ Frame 2.0
- (3'-0"x7'-0") Door W/ Frame Ex 1.0
- (6'-0"x8'-0") Door W/ Frame Ex 1.0
- (2'-6"x6'-8") Hinged Door W/ Frame 2.0
- (2'-8"x6'-8") Hinged Door W/ Frame 5.0
- (3'-0"x6'-8") Door W/ Frame 3.0
- (2'-4"x6'-8") Pocket Door W/ Frame 1.0
- (6'-0"x6'-8") Slider Door W/ Frame 2.0
- (3'-0"x6'-8") Pocket Door W/ Frame 1.0
- (2'-6"x5'-0") Single Hung Window W/ Frame 4.0
- (6'-0"x6'-8") XQ TG PD Right Sliding Window W/Fra... 1.0
- (6'-0"x1'-0") FXD Transom Window W/ Frame 1.0
- (4'-0"x2'-0") Single Awning Window W/ Frame 2.0
- (6'-0"x6'-10") FXD Transom Window W/ Frame 2.0
- (4'-0"x6'-8") Door Way 1.0
- (5'-0"x3'-0") XO Egress Window W/ Frame 1.0
- (5'-6"x1'-0") FXD TD Window W/ Frame 2.0
- (6'-0"x6'-8") Quad Patio Door W/ Frame 1.0
- (3'-0"x7'-0") FXD TG Window W/ Frame 1.0
- (3'-0"x6'-10") FXD Window W/ Frame 2.0
- (2'-0"x2'-0") Single Awning Window W/ Frame 4.0
- (5'-0"x4'-0") TG Window W/ Frame 1.0
- (2'-0"x2'-0") FXD TG Window W/ Frame 2.0
- (7'-9/16" H) Riser 14.0
- (10" D x 41" W) Tread 12.0
- Landing Area 24.5 SQ FT
- 42" H x Guard Railing 26.3 FT
- 42" H x Guard Railing 45.3 FT
- 2x Unspecified Stringer 19.7 FT
- 2x Unspecified Beam 10.7 FT
- 36" H x Hand Railing 8.8 FT
- 2x Unspecified Beam 6.1 FT
- 2x Unspecified Beam 11.5 FT
- 2x Unspecified Beam 1.0
- 6x6x8'-8" Post 20.4 FT
- 2x Unspecified Beam Porch Beam 125.7 FT
- 2x6x120" Exterior Wall (10'-1 1/8" Ceiling) 45.8 FT
- 2x6x156" Exterior Wall (10'-1 1/8" Ceiling) 5.3 FT
- 2x4x96" Interior Wall (8'-1 1/8" Ceiling) 155.6 FT
- 2x6x96" Interior Wall (8'-1 1/8" Ceiling) 69.3 FT
- 2x6x96" Exterior Wall (8'-1 1/8" Ceiling) 216.6 FT
- 2x6x82" Exterior Wall 32.0 FT
- 2x6x45" Exterior Wall 46.5 FT
- 2x6x24" Exterior Wall 13.2 FT
- 2x6x48" Exterior Wall 32.5 FT
- 2x6x64" Exterior Wall 49.5 FT
- 2x6x120" Exterior Wall 0.0 FT
- garage Ceiling 1,225.8 SQ FT
- Main Floor Ceiling 445.2 SQ FT
- Valuted Ceiling 965.4 SQ FT
- Porch Ceiling 101.9 SQ FT
- Door Header 92.4 FT
- Window Header 98.8 FT
- 2x Unspecified Landing Joist 26.3 SQ FT



BACK FORTY
BUILDING CO.

DESIGNER INFORMATION

PROJECT INFORMATION

CLIENT INFORMATION

PROJECT INFORMATION

DESIGN CRITERIA

PLAN AREAS

SQ FT TOTALS

LIVING AREAS

NON-LIVING AREAS

TOTALS

DRAWINGS INDEX

Date Printed - 5/15/2023

SHEET INFORMATION

Main Floor Plan & Sched.

SHEET #1

AE201

PAGE 3 4

