

PARCEL MAP NO. 34 - 39

IN THE UNINCORPORATED TERRITORY
OF THE COUNTY OF MONO, STATE OF CALIFORNIA
BEING A SUBDIVISION OF THE NORTHEAST QUARTER
OF SECTION 18, T. 3N., R. 27E., M.D.B. & M.

FD. OLD ROCK MOUND WITH
8" LONG x 1" DIA. IRON PIPE
LYING NEARBY, ACCEPTED AS
N.W. CORNER SEC. 18

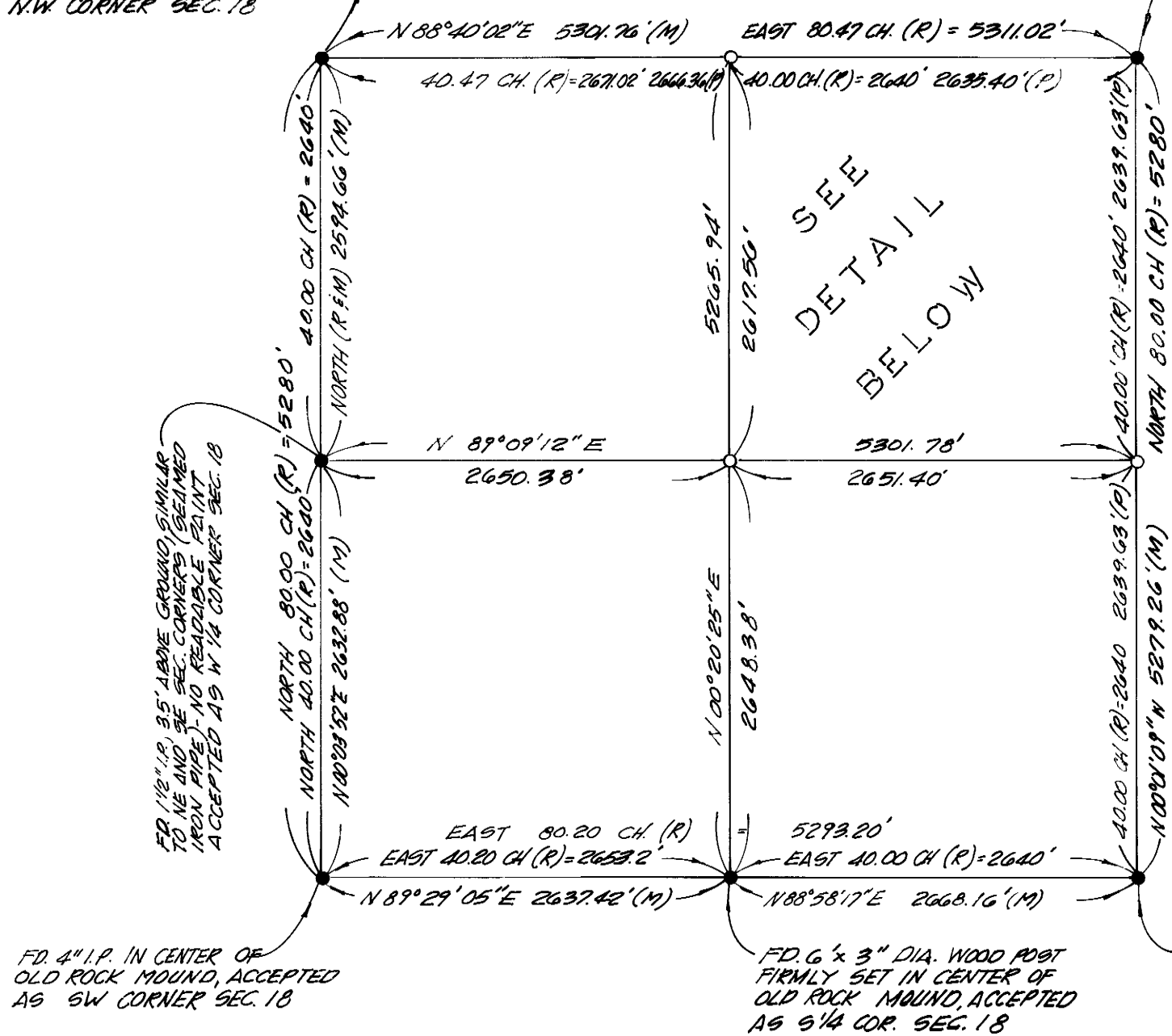
FD. 1 1/2" I.P. 3' ABOVE GROUND WITH BLACK
PAINT READING "57 98 99 99 T. 3N.
R. 27E. M.D.M. - C.W.F.C.S." SHOWN ON
R.S.M.D. 1/101 TO BE SET BY CHARLIE
W. FULTON, MONO COUNTY SUPERVISOR
OF THE 1980'S ACCEPTED AS N.E.
CORNER SECTION 18.

BASIS OF BEARINGS

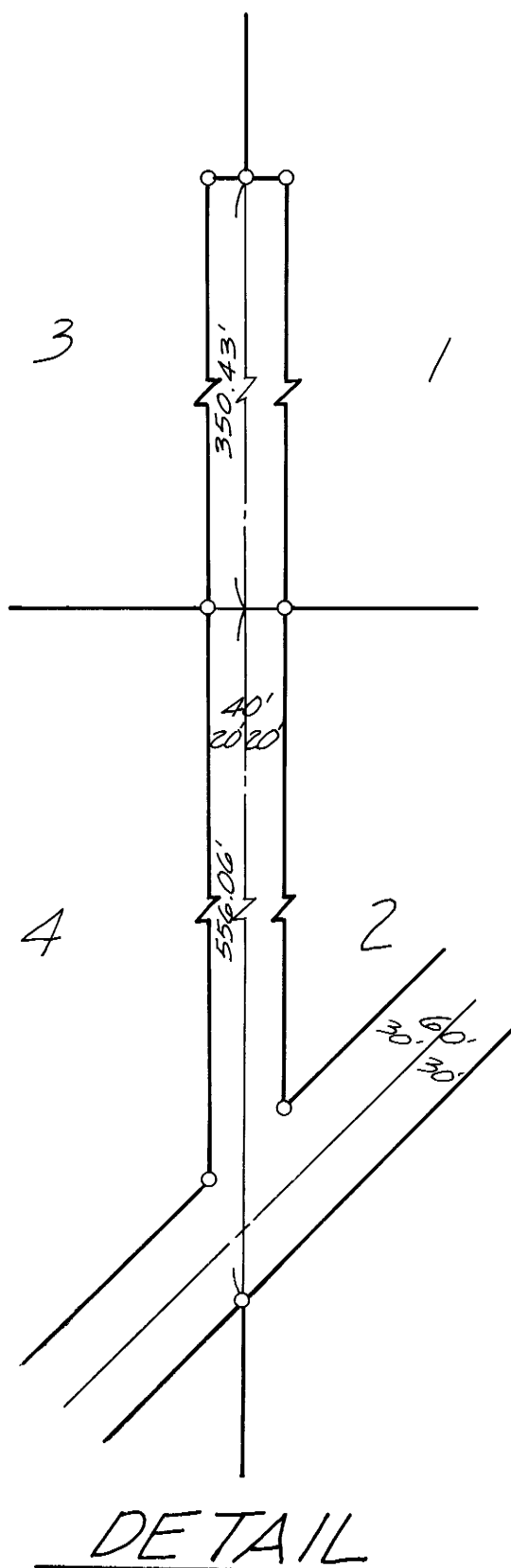
THE BASIS OF BEARINGS FOR THIS SURVEY IS THE WEST
LINE OF THE NORTHWEST QUARTER OF SECTION 18, SHOWN
AS NORTH ON B.L.M. NOTES #103-12 DATED AUGUST
13, 1856.

LEGEND

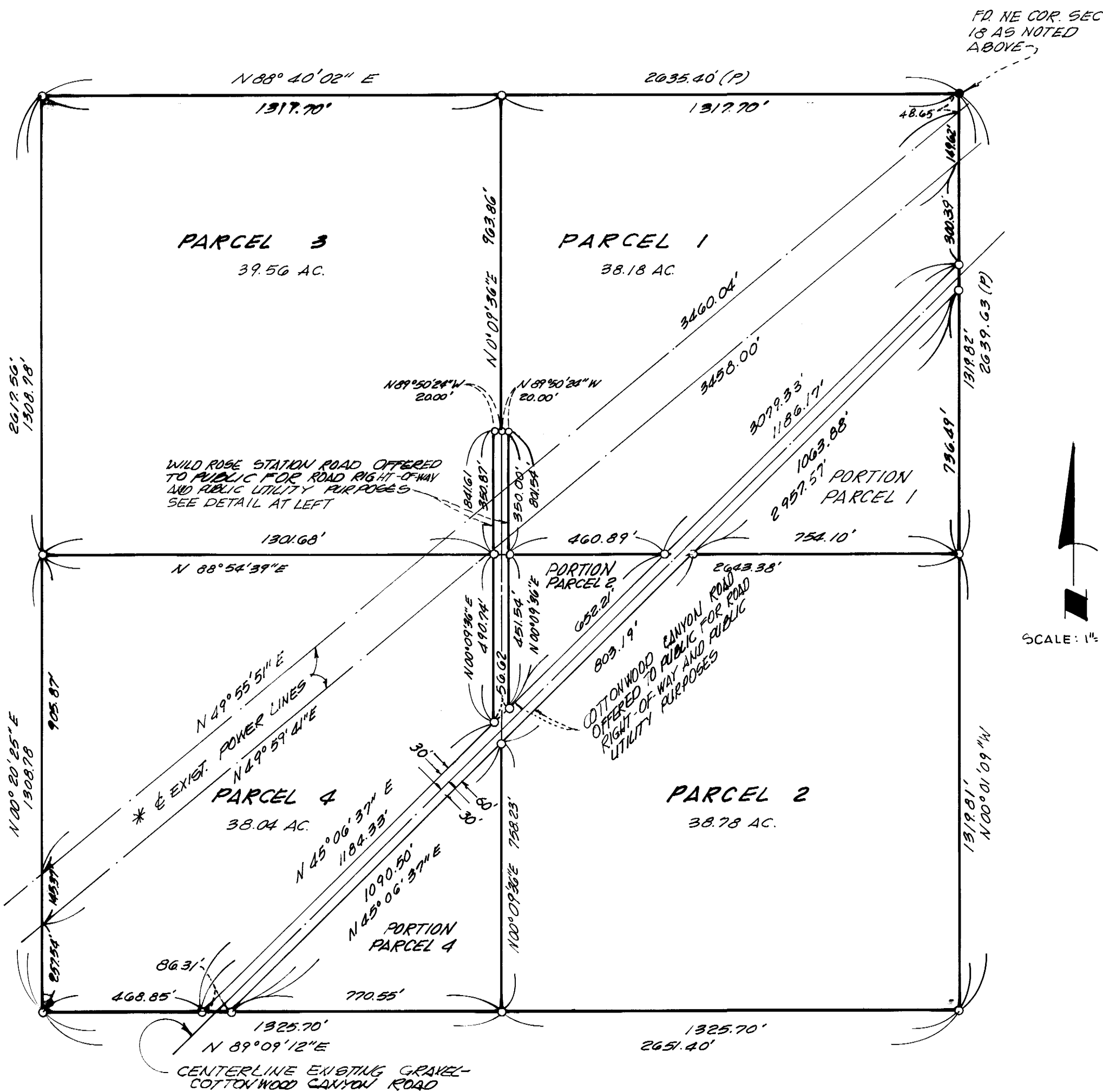
- - FOUND MONUMENT AS NOTED
- - SET 2" IRON PIPE TAGGED "LS 4537"
- (P) - PROPORTIONED MEASUREMENTS FROM RECORD INFORMATION.
- (R) - RECORD INFORMATION PER BLM NOTES #103-12 BY A.W. VON SCHMIDT, DATED AUGUST 13, 1856.



SECTION 18



* POSSIBLE EASEMENT PER
9/11/11 O.R. (UNDISCLOSED
WIDTH AND LOCATION)



NE 1/4 SECTION 18