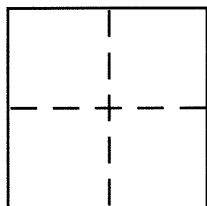


CORNER RECORDDocument Number CR 7483City of OAKLANDCounty of ALAMEDA, CaliforniaBrief Legal Description LOT 1460, FORESTLAND EXTENSION (4 M 90)**CORNER TYPE**Government Corner ☐ Control ☐Meander ☐ Property ☒Rancho ☐ Other ☐Date of Survey AUG. 1, 2015**COORDINATES (Optional)**

N. _____

E. _____

Zone _____ NAD27 ☐ NAD83 ☐

NAD83 Epoch _____

Elev. _____

Vert. Datum: NGVD29 ☐ NAVD88 ☐Meas. Units: Metric ☐ Imperial ☐
Corner – Left as found ☐ Found and tagged ☐ Established ☒ Reestablished ☐ Rebuilt ☐

Identification and type of corner found: Evidence used to identify or procedure used to establish or reestablish the corner:

SEE OTHER SIDE

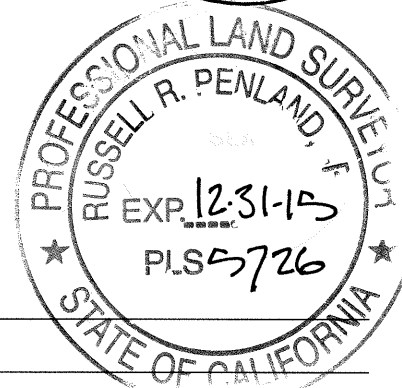
A description of the physical condition of the monument as found and as set or reset: _____

SEE OTHER SIDE**SURVEYOR'S STATEMENT**

This Corner Record was prepared by me or under my direction in conformance with

the Land Surveyor's Act on AUGUST 10, 2015Signed Robert J. Brunel P.L.S. or R.C.E. No. 4961**COUNTY SURVEYOR'S STATEMENT**This Corner Record was received 8-17-15and examined and filed 9-11-15Signed Russell R. Penland P.L.S. or R.C.E. No. 5726Title COUNTY SURVEYOR

County Surveyor's Comment _____



LOT 1460

FORESTLAND EXTENSION (4 M 90)

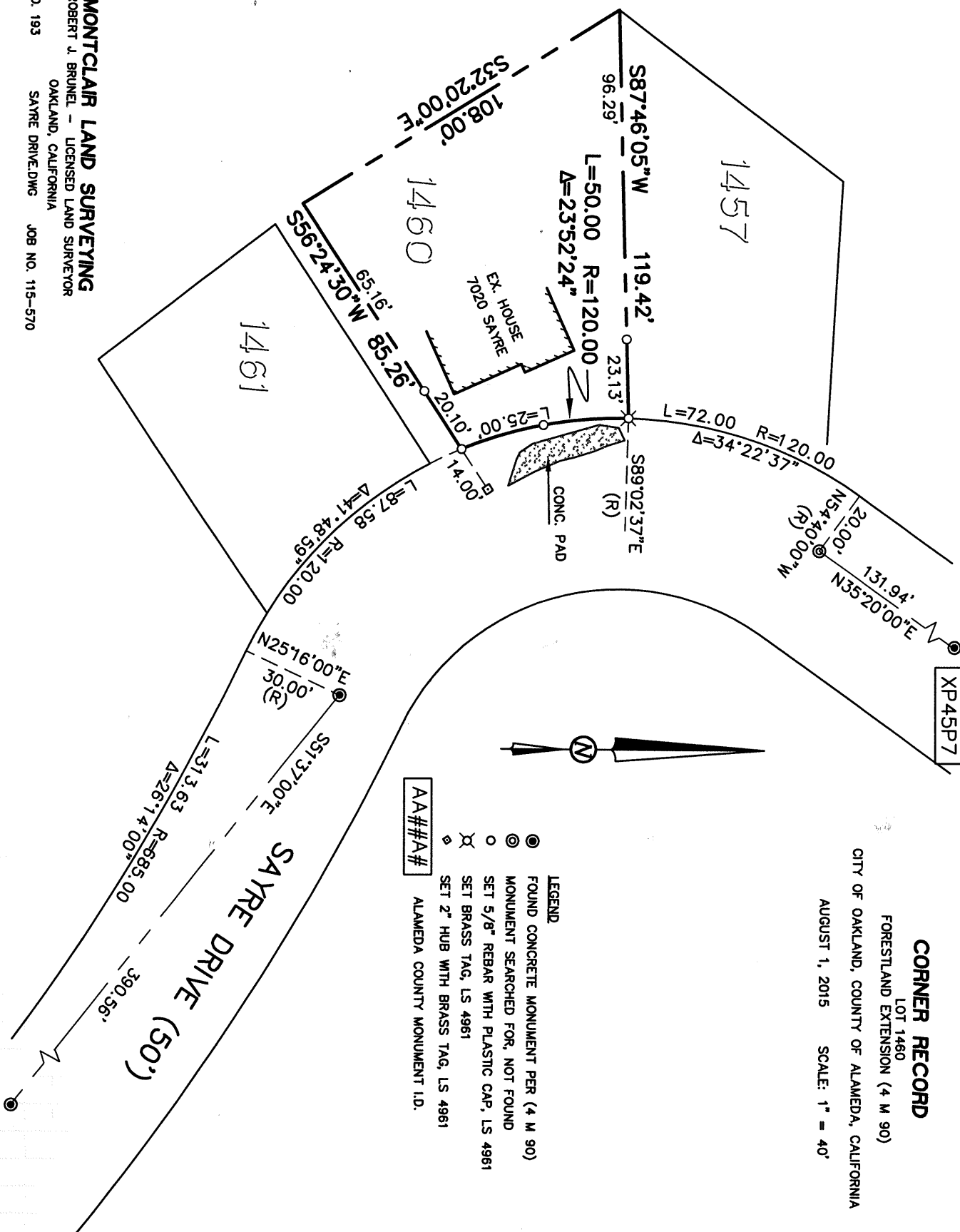
CITY OF OAKLAND, COUNTY OF ALAMEDA, CALIFORNIA

AUGUST 1, 2015 **SCALE: 1" = 40'**



- | LEGEND | |
|--------|--|
| ● | FOUND CONCRETE MONUMENT PER (4 M 90) |
| ◎ | MONUMENT SEARCHED FOR, NOT FOUND |
| ○ | SET 5/8" REBAR WITH PLASTIC CAP, LS 4961 |
| ✂ | SET BRASS TAG, LS 4961 |
| ◇ | SET 2" HUB WITH BRASS TAG, LS 4961 |
- AA##A#
- ALAMEDA COUNTY MONUMENT I.D.

ALAMEDA COUNTY MONUMENT I.D.



MONTCLAIR LAND SURVEYING

ROBERT J. BRUNEL - LICENSED LAND SURVEYOR

OAKLAND, CALIFORNIA

F.B. NO. 193

SAYRE DRIVE.DWG

JOB NO. 115-570