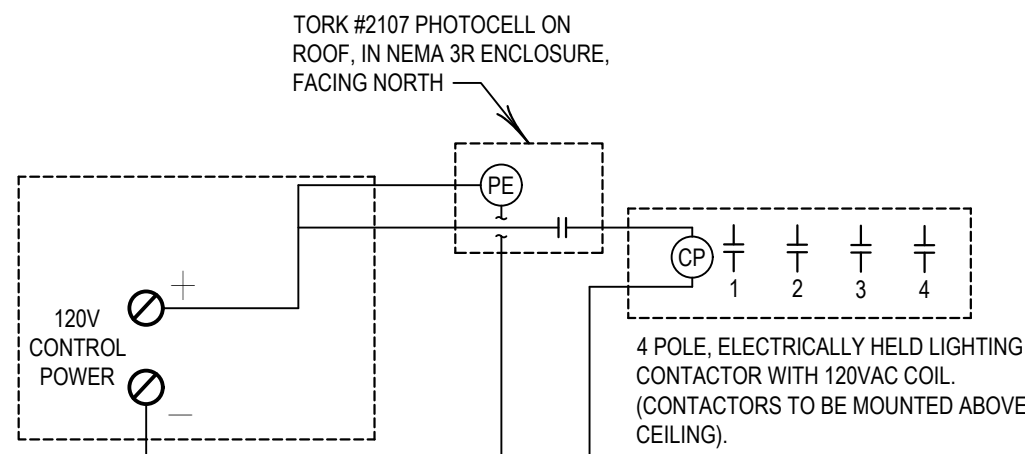


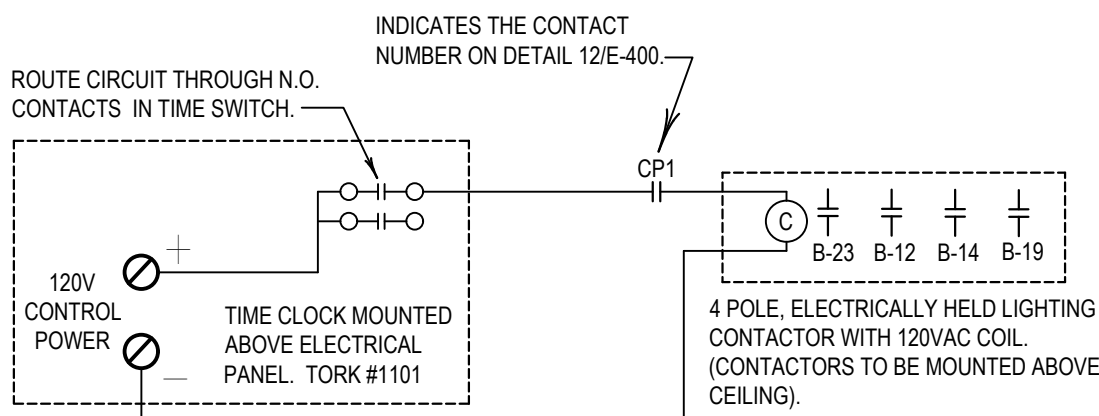
HA-KLV-PESK-DV-PESK-E400 20 Nov 2018 - 3:15 pm

** G.C. AND ELECTRICIAN TO COORDINATE WITH PANDA PROJECT MANAGER FOR TIME SCHEDULE BEFORE FINAL SETTING ON TIME CLOCKS.



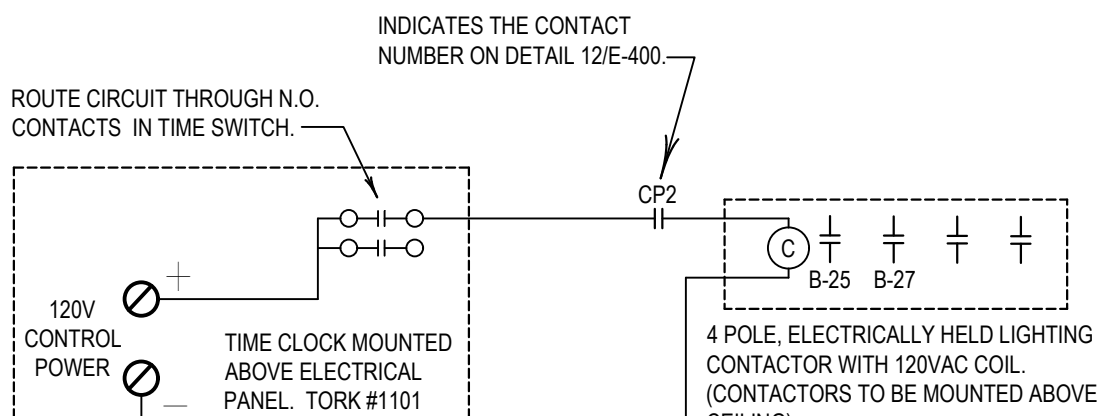
TIME CLOCKS 12

NOT TO SCALE E-400



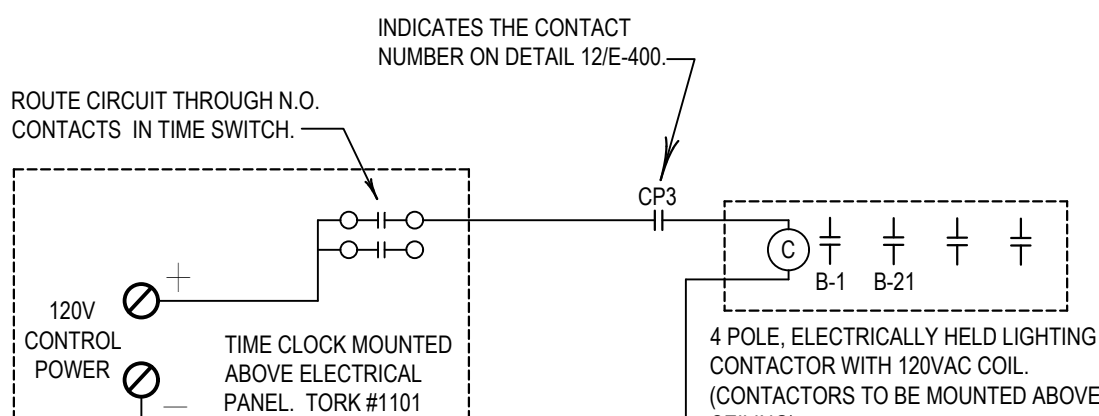
CONTRACTOR TO LABEL TIMECLOCK "BUILDING LIGHTS"

A



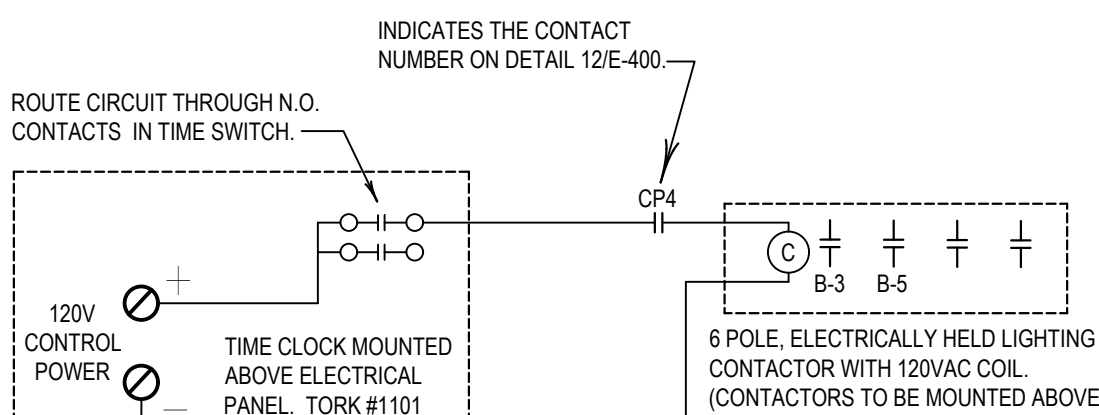
CONTRACTOR TO LABEL TIMECLOCK "DRIVE THROUGH"

B



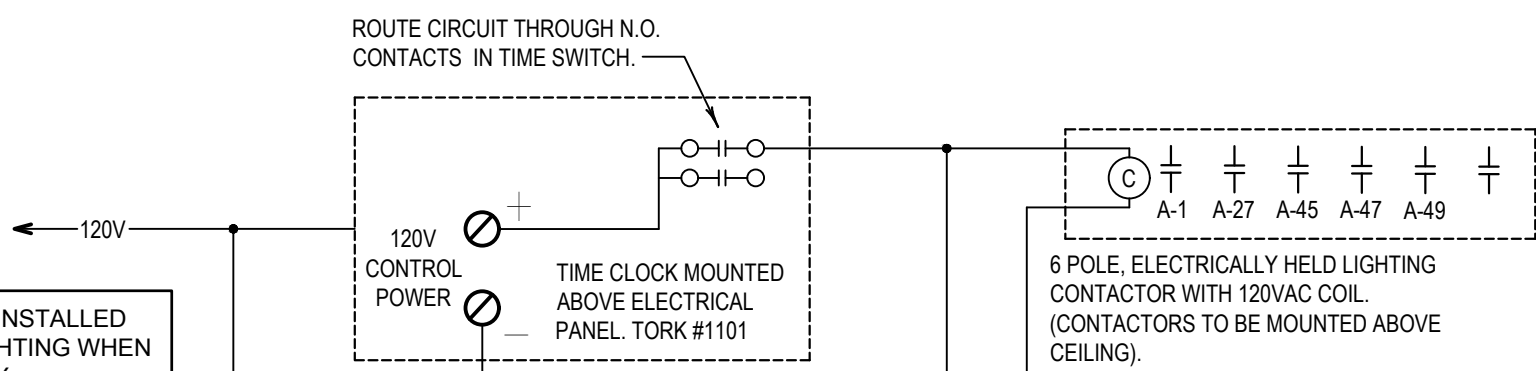
CONTRACTOR TO LABEL TIMECLOCK "SIGNS"

C



CONTRACTOR TO LABEL TIMECLOCK "PARKING LOT"

D



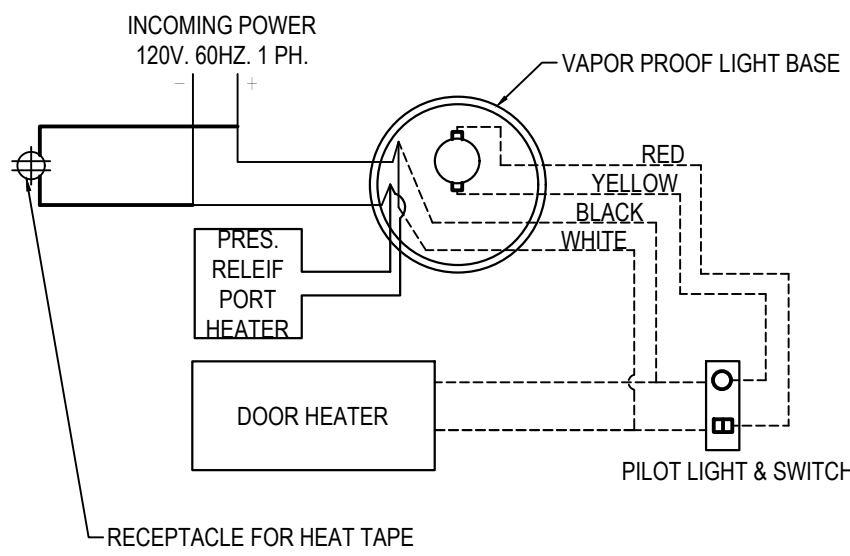
INDICATES DIGITAL OVERRIDE TIMER SWITCH. REFER TO SHEET 7/E200 & 4/E101 FOR LOCATION.

CONTRACTOR TO LABEL TIMECLOCK "INTERIOR LIGHTING"

E

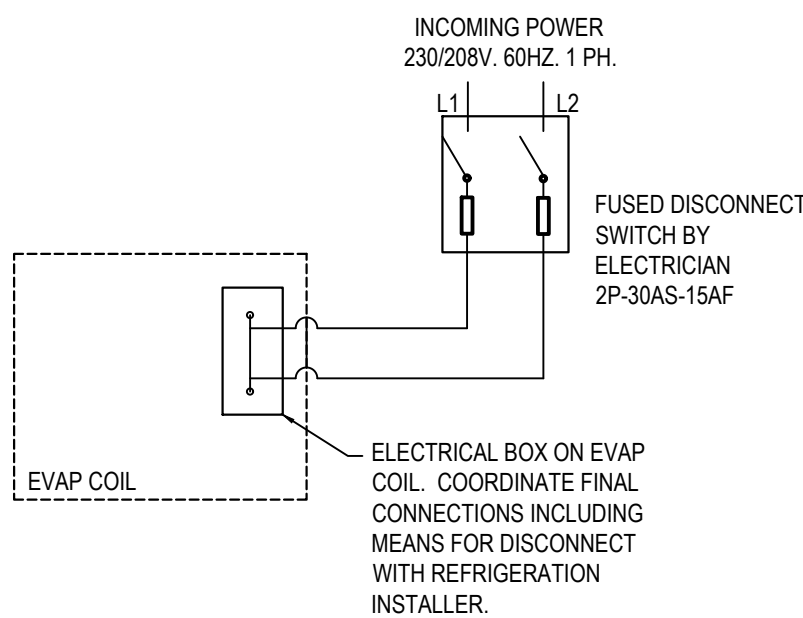
TIME CLOCKS 11

NOT TO SCALE E-400



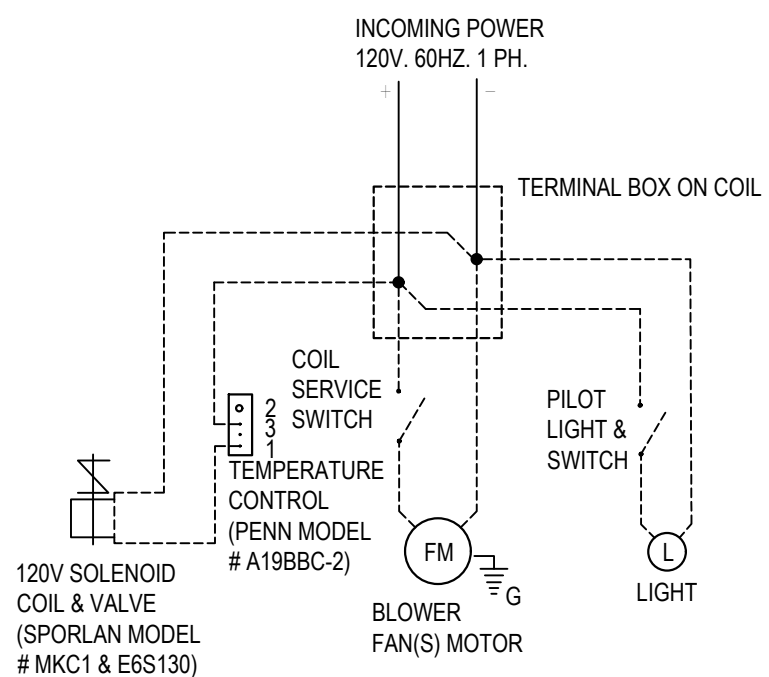
FREEZER LTG & DOOR HTR WIRING DIAGRAM 10

NOT TO SCALE E-400



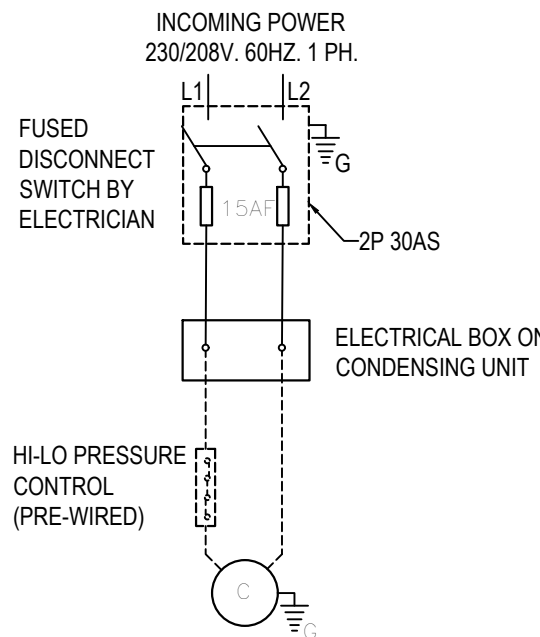
FREEZER EVAPORATOR COIL 9

NOT TO SCALE E-400



COOLER EVAPORATOR COIL 8

NOT TO SCALE E-400



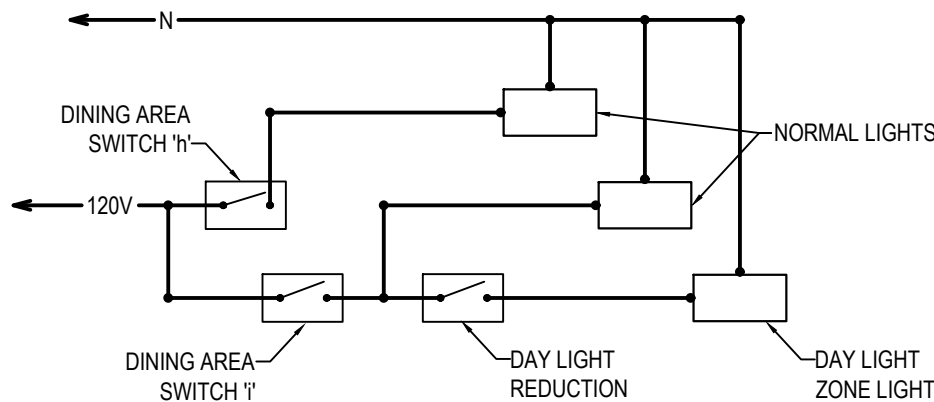
CONDENSING UNIT 7

NOT TO SCALE E-400

1. WIRING SHOULD BE DONE ACCORDING WITH NATIONAL AND LOCAL CODE.
2. CHECK VOLTAGE ON CONDENSING UNIT AND EVAPORATOR COIL BEFORE ANY WORK IS DONE.
3. SOLID LINES TO BE WIRED BY LICENSED ELECTRICIAN ON SITE. DOTTED LINES ARE MANUFACTURE PRE-WIRED.
4. ANY PENETRATIONS THROUGH BOX SHALL BE SEALED AIR TIGHT.

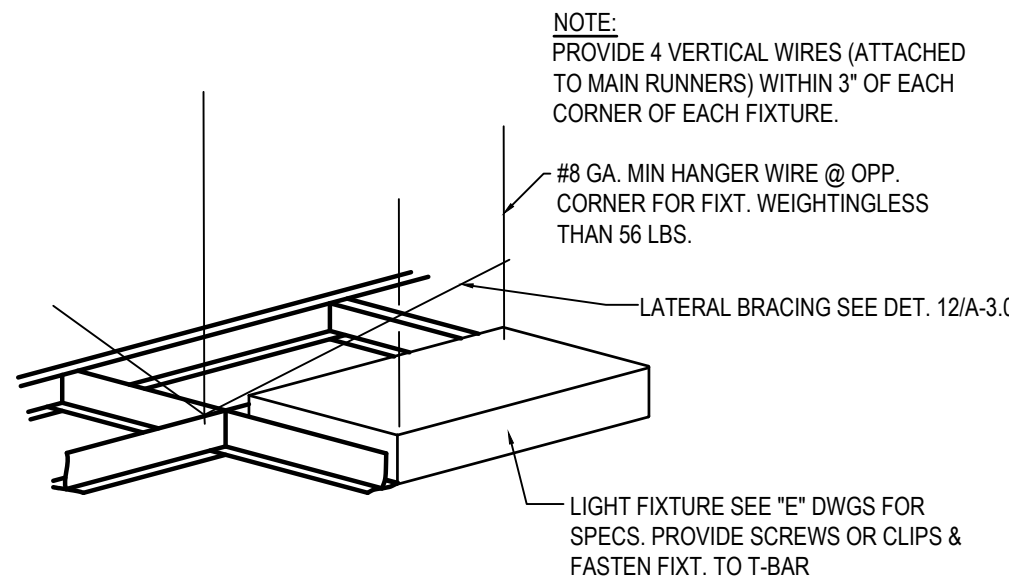
WIC / WIF WIRING DIAGRAM NOTES 6

NOT TO SCALE E-400



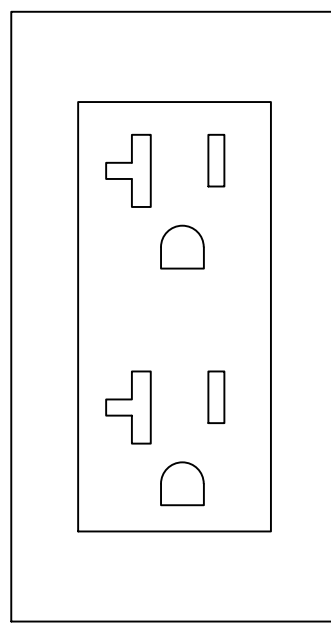
DAYLIGHT REDUCTION CONTROL WIRING DIAGRAM 5

NOT TO SCALE E-400



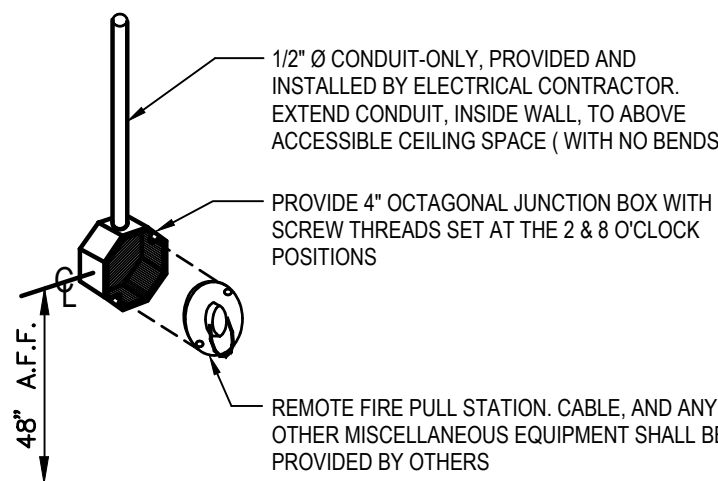
LIGHT FIXTURE DETAIL 4

NOT TO SCALE E-400



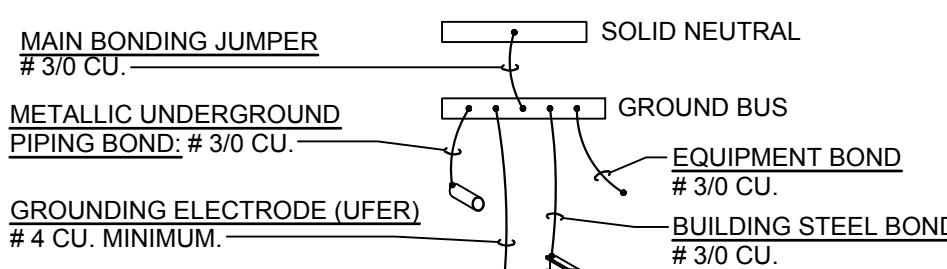
RECEPT. DIAGRAM 3

NOT TO SCALE E-400



ANSUL PULL STATION DETAIL 2

NOT TO SCALE E-400



'SES' GROUNDING DETAIL 1

NOT TO SCALE E-400



PANDA EXPRESS INC.
1683 Walnut Grove Ave.
Rosemead, California
91770
Telephone: 626.799.9898
Facsimile: 626.372.8288

All ideas, designs, arrangement and plans indicated or represented by this drawing are the property of Panda Express Inc. and were created for use on this specific project. None of these ideas, designs, arrangements or plans may be used by or disclosed to any person, firm, or corporation without the written permission of Panda Express Inc.

REVISIONS:

1ST	PERMIT SET	10-05-18
2ND	BID SET	11-20-18

ISSUE DATE:

1ST	PERMIT SET	10-05-18
2ND	BID SET	11-20-18

DRAWN BY: BEN

PANDA PROJECT #: S8-19-D6462
ARCH PROJECT #: 180044.013



PANDA EXPRESS
TRUE WARM & WELCOME 2200
CONESTOGA PKWY & HISTORICAL TRAIL
SHEPHERDSVILLE, KY 40165

E-400

ELECTRICAL DETAILS, DIAGRAMS

BID SET 11.20.2018