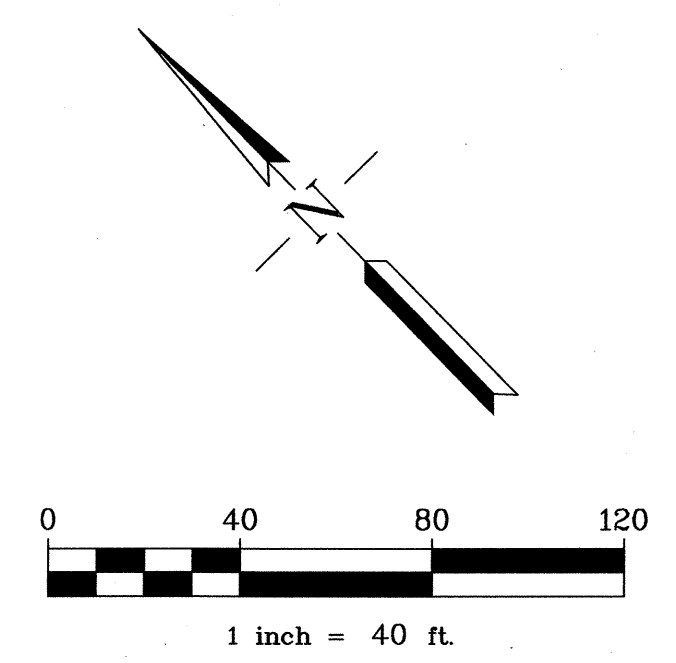


DETAIL "A"
TYPICAL CTVE
NOT TO SCALE

NOTE:
CTVE SHOWN IN DETAIL "A" IS TYPICAL.
EACH LOT LINE IN TRACT 7124 WILL HAVE
A 3'x20' EASEMENT AS SHOWN.



NOTE:
1. ALL MONUMENT LINE TIES ARE AT RIGHT ANGLES
TO THE MONUMENT LINE UNLESS OTHERWISE NOTED.

BASIS OF BEARINGS

TAKEN AS N44°30'00"E BETWEEN THE MONUMENT AT THE
INTERSECTION OF TAYLOR AVENUE AND INDUSTRIAL PARKWAY
AND THE MONUMENT AT THE INTERSECTION OF HUNTWOOD
AVENUE AND INDUSTRIAL PARKWAY AS SHOWN ON THE MAP OF
TRACT 7069 FILED JULY 28, 1999 IN BOOK 247 OF MAPS AT
PAGES 38-43, OFFICIAL RECORDS OF ALAMEDA COUNTY

LEGEND

- EXTERIOR BOUNDARY
- LOT LINE
- - - - - EXISTING EASEMENT LINE
- - - - - NEW EASEMENT LINE
- MONUMENT LINE
- MONUMENT TIE LINE
- FOUND IRON PIPE AS NOTED
- SET 1" IRON PIPE WITH TAG RCE 15227 AS NOTED
- ⊙ FOUND STANDARD CITY OF HAYWARD MONUMENT STAMPED AS NOTED
- ⊙ STANDARD CITY OF HAYWARD MONUMENT TO BE SET PER TRACT 7069, 247 M 38
- ⊙ SET STANDARD CITY OF HAYWARD MONUMENT STAMPED RCE 15227
- (M-M) MONUMENT TO MONUMENT
- PUE PUBLIC UTILITY EASEMENT
- PWE PUBLIC WATERLINE EASEMENT
- CTVE CABLE TELEVISION EASEMENT
- (R) RADIAL BEARING
- (T) TOTAL
- (I) REFERENCE
- BC BEGINNING OF CURVE
- EC END OF CURVE

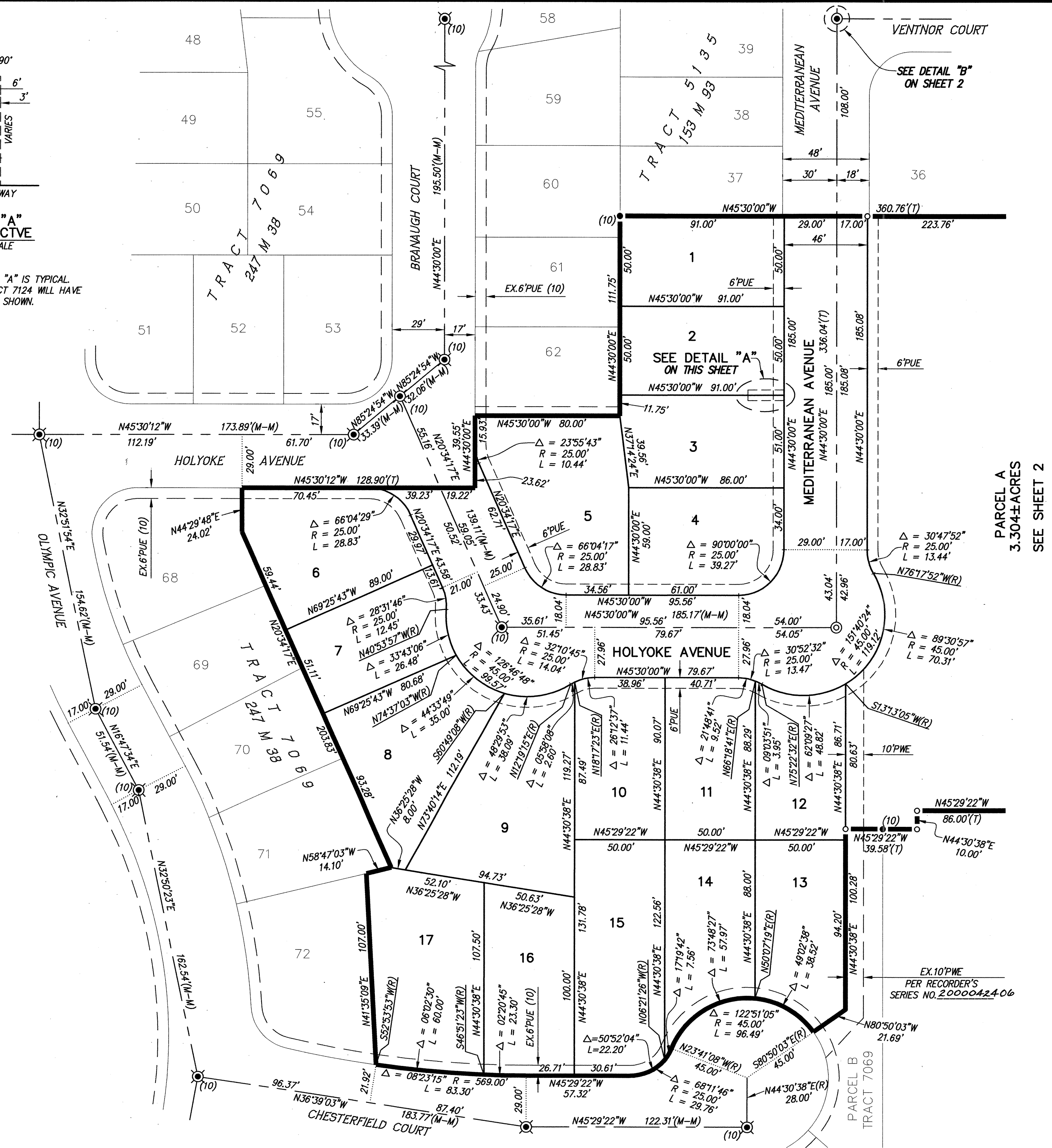
TRACT 7124

A RE-SUBDIVISION OF SILVERSTAR COURT, PARCEL A,
LOTS 63-67 AND 73-77 AS SHOWN ON THE MAP OF TRACT 7069
FILED JULY 28, 1999 IN BOOK 247 OF MAPS AT PAGES 38-43,
AND A PORTION OF THE DEED 91-220595,
OFFICIAL RECORDS OF ALAMEDA COUNTY

CITY OF HAYWARD
ALAMEDA COUNTY, CALIFORNIA
RUGGERI-JENSEN-AZAR & ASSOCIATES
CIVIL ENGINEERS, PLANNERS, SURVEYORS
PLEASANTON, CALIFORNIA
OCTOBER 1999

JOB NO. 971150 SHEET 3 OF 3 SHEETS

AK 250 PL 44



Q:\971150\FINAL\MAPS\TR7124\FIN324.dwg 1-14-00 7:52:28 am PLS_CADD3

TRACT MAP 7124
B-549
MAP BK 250
pg 44