

# CORNER RECORD

96-130 5 Cr 30

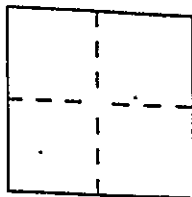
Document Number

CR-609

City of OAKLAND

County of ALAMEDA, California

Brief Legal Description LOTS 15 & 16 Quinn Unit of the Highlands of Oakland  
(5 M 39)



## CORNER TYPE

Government Corner ☐ Control ☐  
Meander ☐ Property ☒  
Rancho ☐ Other ☐  
Date of Survey 1-15-92

## COORDINATES (Optional)

N. \_\_\_\_\_  
E. \_\_\_\_\_  
Zone \_\_\_\_\_ Datum \_\_\_\_\_  
Elev. \_\_\_\_\_

Corner — Left as found ☐ Found and tagged ☐ Established ☒ Reestablished ☐ Rebuilt ☐

Identification and type of corner found: Evidence used to identify or procedure used to establish or reestablish the corner:

Found points as shown on reverse.

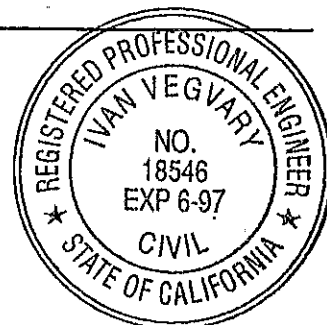
A description of the physical condition of the monument as found and as set or reset:

Set points as shown on reverse.

## SURVEYOR'S STATEMENT

This Corner Record was prepared by me or under my direction in conformance with the Land Surveyors' Act on 6-14 1995.

Signed [Signature] L.S. or R.C.E. Number 18546

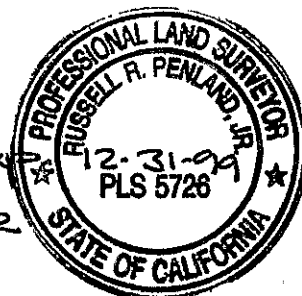


## COUNTY SURVEYOR'S STATEMENT

This Corner Record was received 6-21 1995 and examined

and filed 12-31-99 1996.

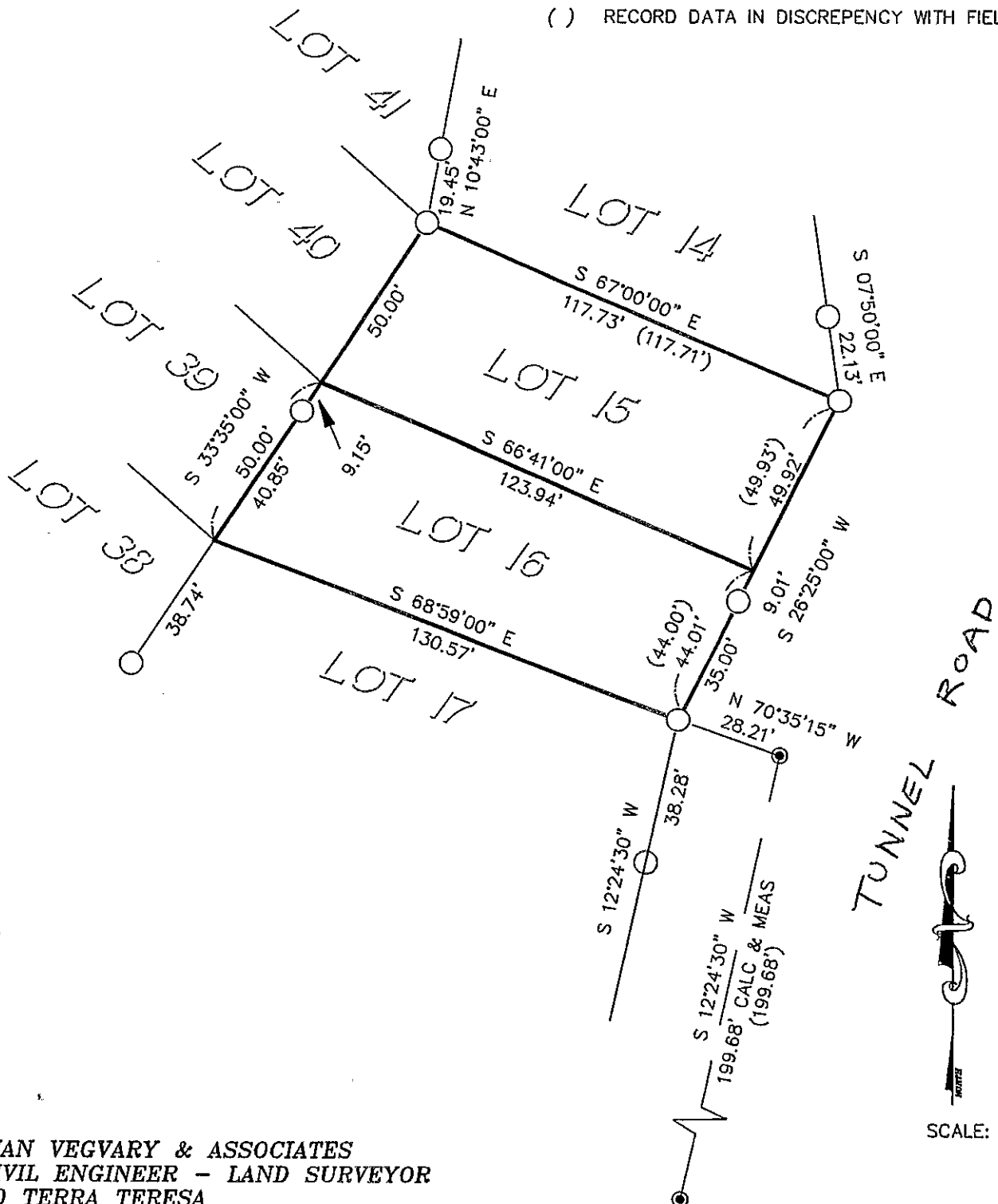
Signed Russell R. Penland, Jr. Title County Surveyor



County Surveyor's Comment \_\_\_\_\_

LOTS 15 & 16  
GWIN UNIT OF THE HIGHLANDS  
5 M 39

- FOUND STANDARD STREET MONUMENT
- FOUND POINT AS NOTED
- SET 5/8" REBAR R.C.E. 18546
- ( ) RECORD DATA IN DISCREPANCY WITH FIELD



**IVAN VEGVARY & ASSOCIATES**  
**CIVIL ENGINEER - LAND SURVEYOR**  
**40 TERRA TERESA**  
**LAFAYETTE, CA 94549**  
**(510) 947-1051**

609