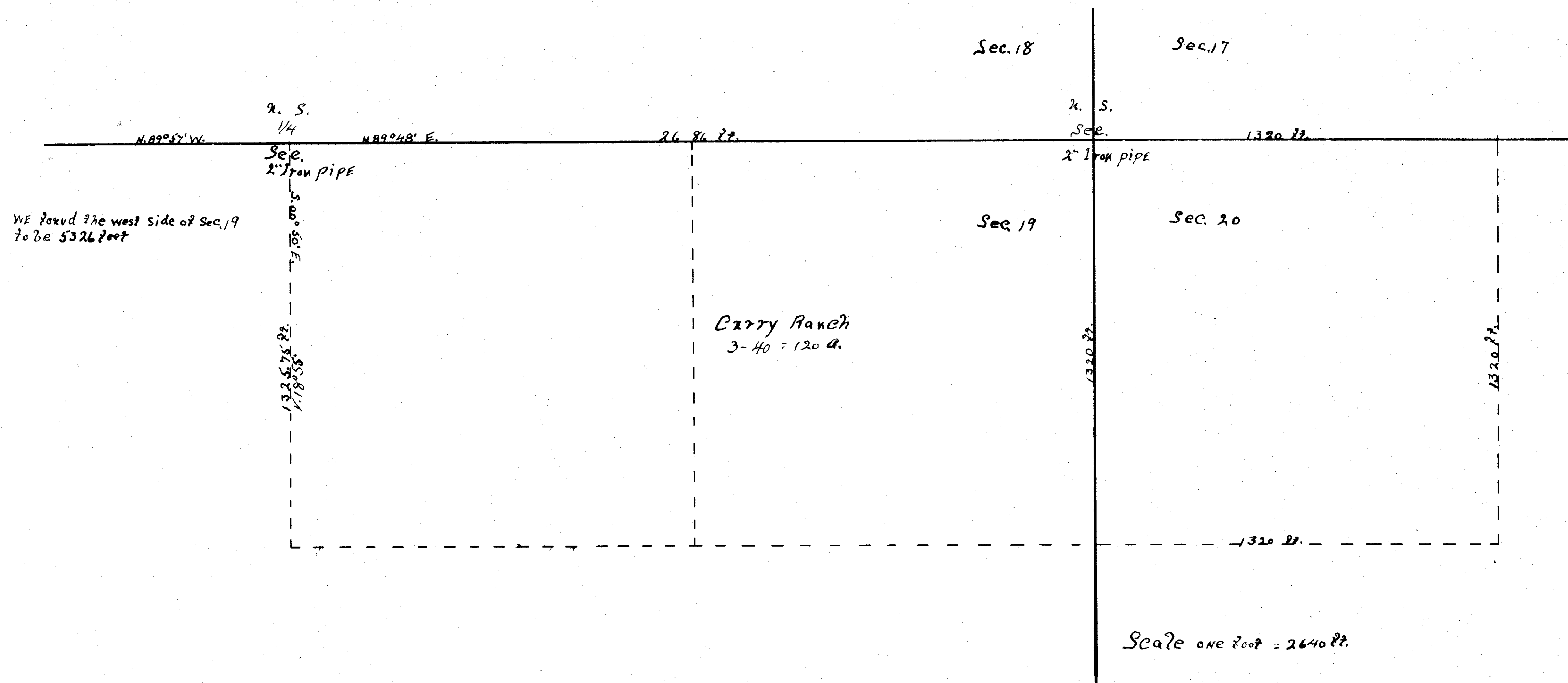


Robert Curry Survey  
in Sec. 19 & 20 T. 2 N., R. 26 E.

M. D. M.

June 24<sup>th</sup>, 1926.



Scale one foot = 2640 ft.

Surveyed by  
Charles W. Fulton  
County Surveyor

Filed  
Aug. 2, 1926  
Ruth Laughlin  
Co. Recorder

3000-4.0