

SURVEYOR'S CERTIFICATE

This map was prepared by me or under my direction and is based upon a field survey in conformance with the requirements of the SUBDIVISION MAP ACT, at the request of George Baba on February 2, 1973. I hereby certify that it conforms to the approved tentative map and the conditions of approval thereof: that the provisions of applicable State Law and Local Ordinances have been complied with.

Richard L. Skidmore
RICHARD L. SKIDMORE, L.S. 3580



CITY ENGINEER'S CERTIFICATE

This map has been examined for conformance with the requirements of Section 11575 of the SUBDIVISION MAP ACT this 29th day of March 1973.

Andrew R. Campbell
CITY ENGINEER

Deputy

RECORDER'S CERTIFICATE

Filed this 29 day of March 1973, at 2:00 P.M. in Book 16 of PARCEL MAPS at page 67 at the request of George Baba.

STEVE R. NELSON
County Recorder

Instr. No.: 41796

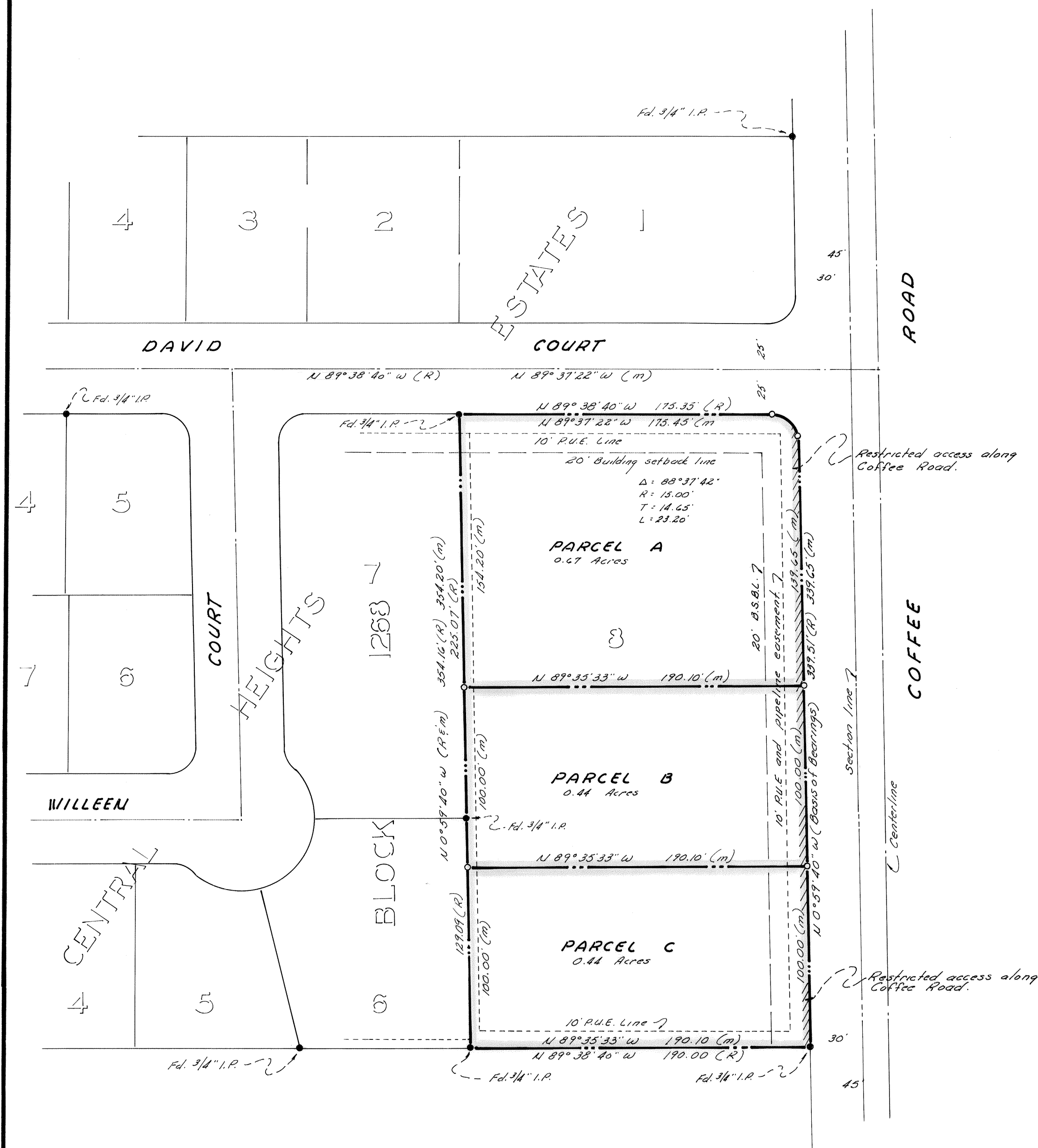
Fee \$ 5.00

Deputy

PARCEL MAP

A DIVISION OF LOT 8, BLOCK 1268 OF CENTRAL HEIGHTS ESTATES, SEC. 16, T3S, R9E, MDM, MODESTO, CALIFORNIA

R.B. WELTY & ASSOCIATES, Inc.
1301 K STREET — SUITE G
MODESTO, CALIFORNIA
JOB NO. 4254



SCALE: 1"=50'

LEGEND:

- indicates 3/4" I.P. Set, tagged L.S. 3580
- indicates monument found as noted.
- (m) refers to measurement made this survey
- (R) refers to record measurement, Vol. 21 MAPS Pg. 32.
- ||||| indicates restricted access along Coffee Road

BASIS OF BEARINGS:

A Course of $N 0^{\circ} 59' 40'' W$ for the East line of Section 16, T3S, R9E, as per Vol. 21 MAPS Pg. 32.

NOTE:

Limited access for Parcels B and C was adopted on March 12, 1973, by Modesto City Council Resolution No. 73-228. Recorded in Vol. 151 O.R. Pg. 461.